

Commodity: Soybean
Contract: Jan

Exchange: NCDEX
Expiry: Jan 20th, 2012

SOYBEAN – Technical Outlook

Technical Commentary:

- Candlestick chart indicates uptrend in the market.
- Prices closed above 9-day EMA, indicating bullish tone in near-term.
- MACD is heading upwards in negative region.
- RSI and stochastic are heading upwards in neutral zone.

The soybeans prices are likely to gain in Friday's session.



Strategy: Buy on dips.

Intraday Supports & Resistances			S1	S2	PCP	R1	R2
Soybean	NCDEX	Jan	3179	3145	3227.5	3300	33432
Intraday Trade Call			Call	Entry	T1	T2	SL
Soybean	NCDEX	Jan	BUY	3220-3222	3251	3261	3206

* Do not carry-forward the position next day.

Commodity: Rapeseed/Mustard
Contract: Jan

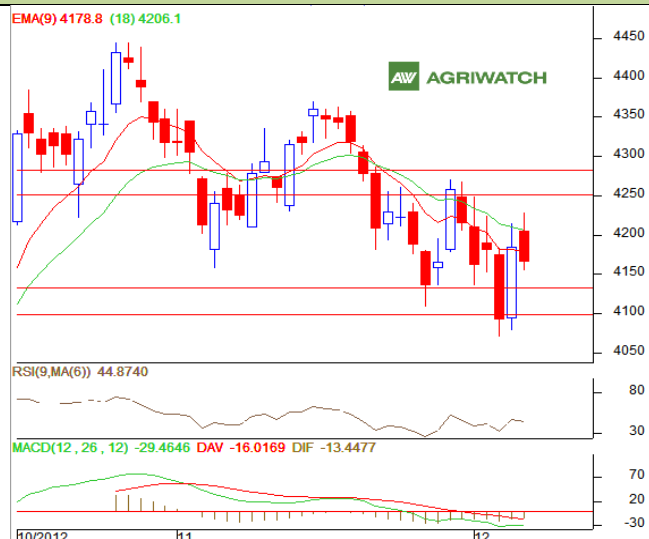
Exchange: NCDEX
Expiry: Jan 20th, 2012

RM SEED – Technical Outlook

Technical Commentary:

- Candlestick chart pattern reveals fall in the prices.
- Prices closed below 9-day and 18-day EMA, indicating weak tone.
- MACD is easing in negative territory.
- RSI and stochastic are easing in neutral zone, supporting the losses.

The RM seed prices are expected to ease in Friday's session.



Strategy: Sell on rise.

Intraday Supports & Resistances			S1	S2	PCP	R1	R2
RM Seed	NCDEX	Jan	4135	4096	4166	4250	4285
Intraday Trade Call			Call	Entry	T1	T2	SL
RM Seed	NCDEX	Jan	SELL	4175-4177	4146	4136	4191

* Do not carry-forward the position next day.

Disclaimer

The information and opinions contained in the document have been compiled from sources believed to be reliable. The company does not warrant its accuracy, completeness and correctness. Use of data and information contained in this report is at your own risk. This document is not, and should not be construed as, an offer to sell or solicitation to buy any commodities. This document may not be reproduced, distributed or published, in whole or in part, by any recipient hereof for any purpose without prior permission from the Company. IASL and its affiliates and/or their officers, directors and employees may have positions in any commodities mentioned in this document (or in any related investment) and may from time to time add to or dispose of any such commodities (or investment). Please see the detailed disclaimer at <http://www.agriwatch.com/Disclaimer.asp>
© 2005 Indian Agribusiness Systems Pvt Ltd.