

Commodity: Soybean
 Contract: Jan

Exchange: NCDEX
 Expiry: Jan 20th, 2012

SOYBEAN – Technical Outlook

Technical Commentary:

- Candlestick chart pattern indicates downtrend in the prices.
- Prices closed below 9-day and 18-day EMA, indicating bearish tone in near and medium-term.
- MACD is easing in negative region.
- RSI is easing in neutral region while stochastic is falling in oversold zone, supporting the losses.

The soybeans prices are likely to feature losses in Friday's session.



Strategy: Sell on rise.

Intraday Supports & Resistances			S1	S2	PCP	R1	R2
Soybean	NCDEX	Jan	3166	3144	3229	3243	3267
Intraday Trade Call			Call	Entry	T1	T2	SL
Soybean	NCDEX	Jan	SELL	3235-3237	3206	3196	3251

* Do not carry-forward the position next day.

Commodity: Rapeseed/Mustard
Contract: Jan

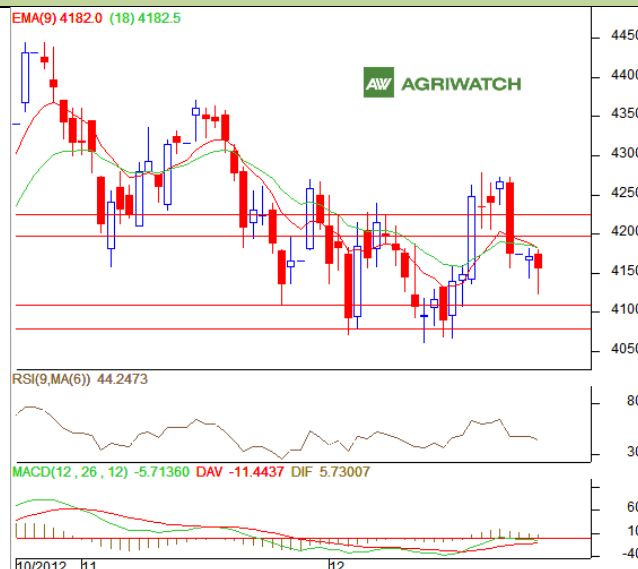
Exchange: NCDEX
Expiry: Jan 20th, 2012

RM SEED – Technical Outlook

Technical Commentary:

- Candlestick chart pattern reveals selling pressure in the market.
- Prices closed below 9-day and 18-day EMA, indicating weak tone.
- MACD is easing in negative territory.
- RSI and stochastic are falling in neutral zone, supporting the losses.

The RM seed prices are expected to fall in Friday's session.



Strategy: Sell on rise.

Intraday Supports & Resistances			S1	S2	PCP	R1	R2
RM Seed	NCDEX	Jan	4109	4078	4155	4196	4225
Intraday Trade Call			Call	Entry	T1	T2	SL
RM Seed	NCDEX	Jan	SELL	4160-4162	4131	4121	4176

* Do not carry-forward the position next day.

Disclaimer

The information and opinions contained in the document have been compiled from sources believed to be reliable. The company does not warrant its accuracy, completeness and correctness. Use of data and information contained in this report is at your own risk. This document is not, and should not be construed as, an offer to sell or solicitation to buy any commodities. This document may not be reproduced, distributed or published, in whole or in part, by any recipient hereof for any purpose without prior permission from the Company. IASL and its affiliates and/or their officers, directors and employees may have positions in any commodities mentioned in this document (or in any related investment) and may from time to time add to or dispose of any such commodities (or investment). Please see the detailed disclaimer at <http://www.agriwatch.com/Disclaimer.asp>
© 2005 Indian Agribusiness Systems Pvt Ltd.