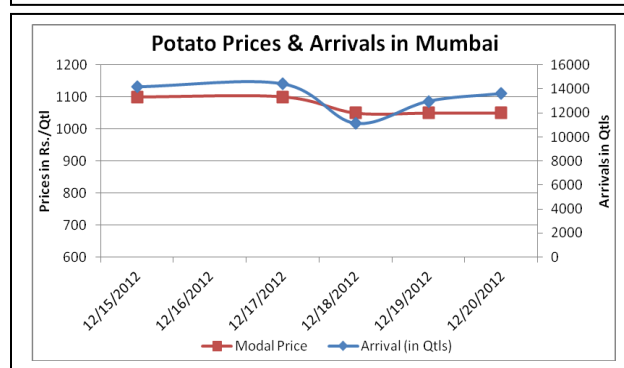
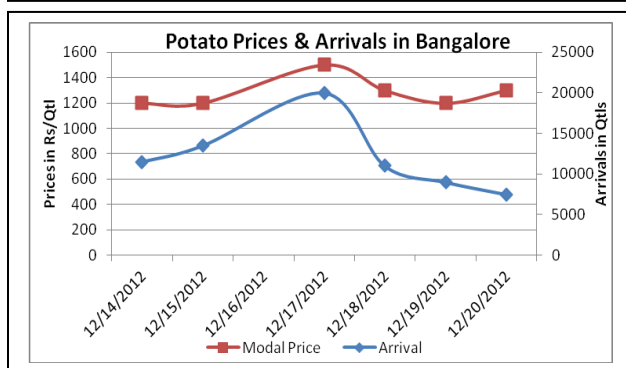
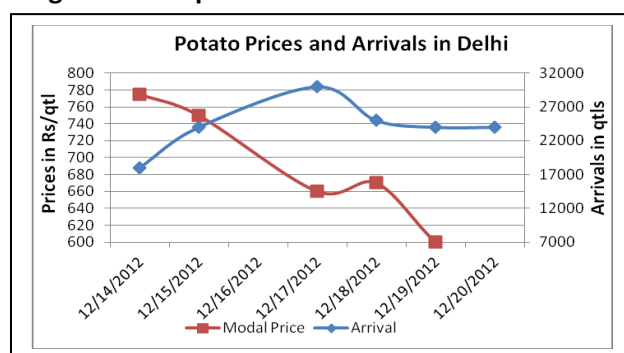
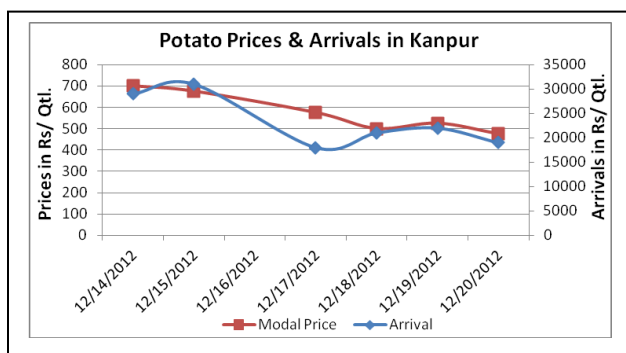


Potato Fundamentals:

- In Bangalore, potato is coming from U.P, Nasik region and local region. According to trade sources, U.P is contributing approximately 65% to the total arrivals. Nasik region and local region are contributing approximately 35% to the total arrival.
- In Bangalore, maximum potato prices are being fetched by local region variety and Agra variety. Prices are hovering around Rs 1700 and 1400/ quintal.
- In Hyderabad, potatoes are coming from local region and Agra which are contributing approximately 25% and 75% to the total arrival. According to trade sources, potatoes from Agra are able to fetch maximum prices of Rs 1300/ quintal.

Potato Prices & Arrivals in Producing & Consumption Centers



(Source: AGRIWATCH)

Potato Prices & Arrivals in major Mandi as on 20/12/2012

Mandi	Ludhiana	Khandauli	Farrukhabad	Kanpur	Indore	Ahmedabad	Bangalore
Price (in Qtl)	300-400	700-1250	400-500	400-550	-	600-1250	900-1700
Arrivals (in Qtl)	5000	6000	30000	19000	-	16000	7500

Potato Prices & Arrivals in major Mandi as on 19/12/2012

Mandi	Ludhiana	Khandauli	Farrukhabad	Kanpur	Indore	Ahmedabad	Bangalore
Price (in Qtl)	400-450	700-1250	400-500	450-600	500-1100	600-1250	700-1700
Arrivals (in Qtl)	4500	6000	30000	22000	8500	16000	9000

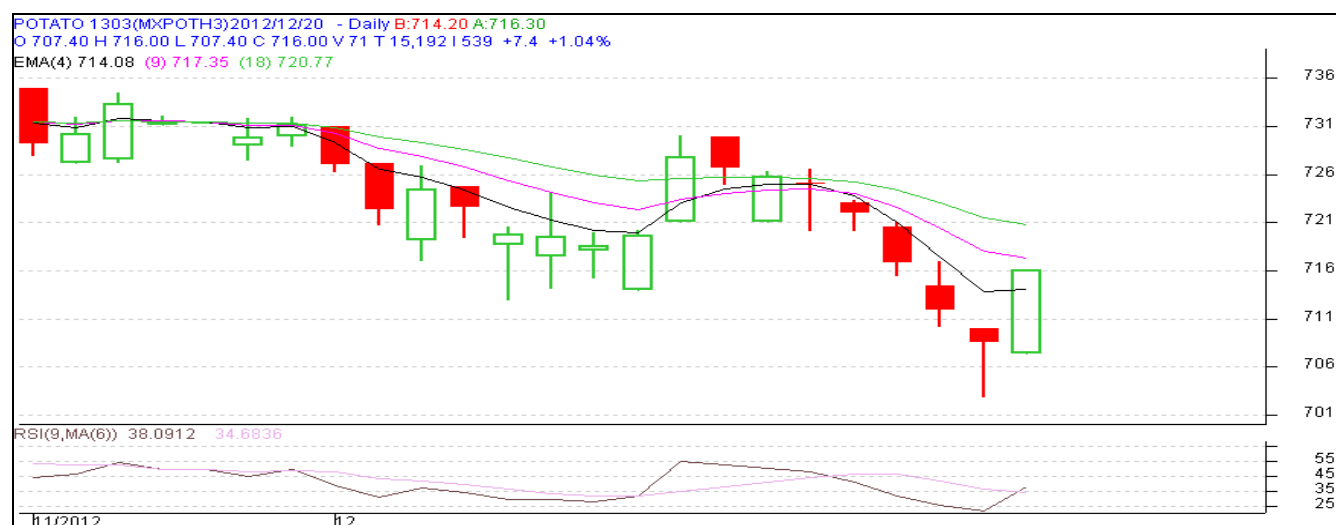
(Source: Agriwatch)

MCX- Potato Futures Analysis: (as on 20th Dec 2012)

Symbol	Exchange	Expiry Date	Today's Close Price	Previous Close Price	Net Change	Today's Open Interest	Previous Day Open Interest	Change
POTATO	MCX	15-Mar-13	716	709.1	6.90	16170	15600	570
POTATO	MCX	15-Apr-13	680.5	672.1	8.40	10620	10320	300
POTATO	MCX	15-May-12	681	670.1	10.90	13200	12420	780
				Total				1650

(Source: MCX)

Daily Price Chart of MCX- Agra March Contract:



(Source: AGRWATCH)

Potato Prices in major markets – Wholesale vs. Retail as on 20th December 2012

Centre	Wholesale Prices (Rs/ qtl)	Retail Price (Rs/ kg)	Centre	Wholesale Prices (Rs/ qtl)	Retail Price (Rs/ kg)
NORTH ZONE			EAST ZONE		
CHANDIGARH	900	10	PATNA	NR	NR
DELHI	575	15	BHAGALPUR	NR	NR
HISAR	800	9	RANCHI	NR	NR
KARNAL	800	10	BHUBANESHWAR	800	12
SHIMLA	NR	14	CUTTACK	800	10
MANDI	NR	16	SAMBALPUR	800	14
SRINAGAR	NR	20	KOLKATA	1100	13
JAMMU	800	16	SILIGURI	800	12
AMRITSAR	1100	15	NORTH-EAST ZONE		
LUDHIANA	800	10	ITANAGAR	NR	NR
BATHINDA	900	15	GUWAHATI	1000	14
LUCKNOW	NR	NR	SHILLONG	1300	18
KANPUR	NR	NR	AIZWAL	2200	30
VARANASI	NR	NR	DIMAPUR	1500	20
AGRA	NR	NR	AGARTALA	1450	19
DEHRADUN	900	14	SOUTH ZONE		
WEST ZONE			PORT BLAIR	2100	24
RAIPUR	1400	16	HYDERABAD	1800	20
PANAJI	NR	NR	VIJAYWADA	1567	18
AHMEDABAD	NR	NR	BENGALURU	1700	19
RAJKOT	NR	NR	DHARWAD	1600	18
BHOPAL	1300	15	T.PURAM	NR	NR
INDORE	NR	NR	ERNAKULAM	NR	NR
GWALIOR	900	10	KOZHIKODE	NR	NR
JABALPUR	NR	NR	PUDUCHERRY	2000	22
MUMBAI	1050	15	CHENNAI	1600	20
NAGPUR	1305	19	DINDIGUL	2300	25
JAIPUR	600	11	THIRUCHIRAPALLI	NR	NR

(Source: State Civil Supplies Dept)

Disclaimer

The information contained in this document has been compiled by Agriwatch from sources believed to be reliable, such as NHB, Agmarknet, etc. and directly from traders in mandis. However, users of this data are requested to use the information with due caution and crosscheck with other sources. This document is not, and should not be construed as an offer to sell or buy any commodities. This document may not be reproduced, distributed or published without the express consent of SFAC