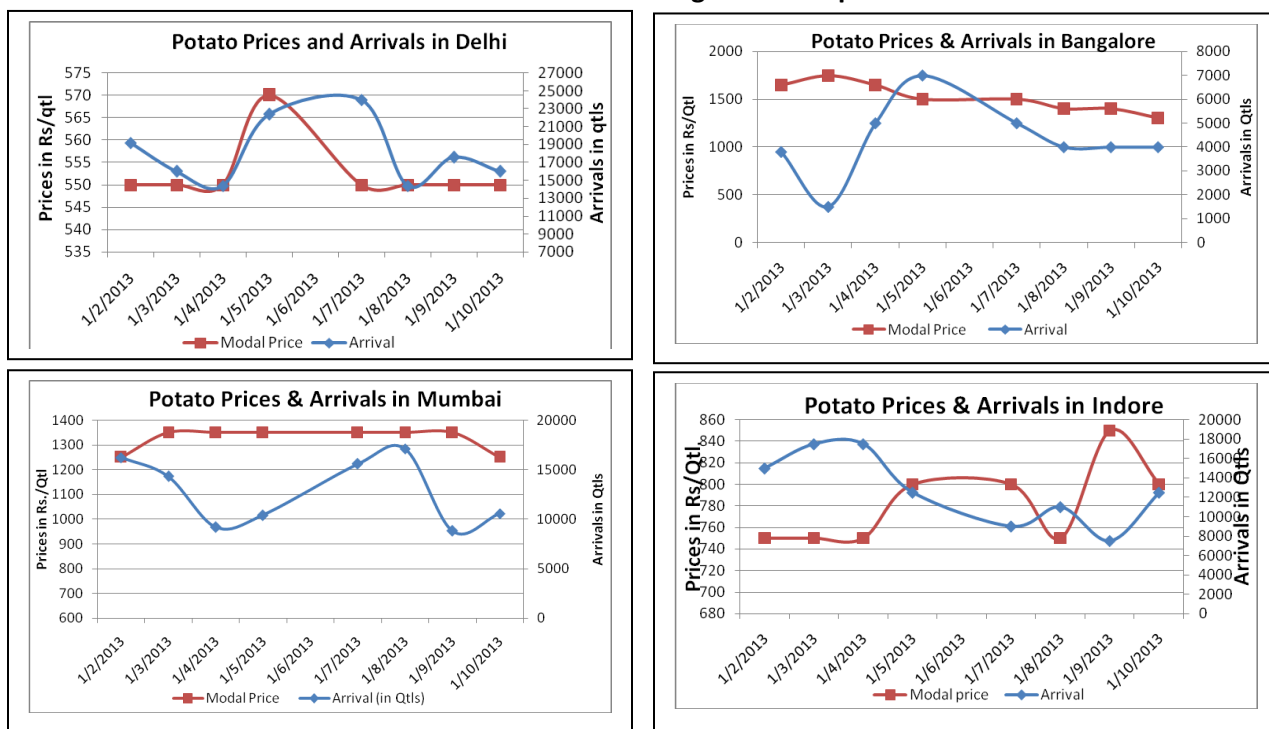


## Potato Fundamentals:

- Potatoes which were sown late in Agra region could be affected due to "Pala" (snow fall). As per trade sources, 25-30% of crop in Agra were sown late.
- Harvesting though in small quantity has started in UP and West Bengal.
- Cold stores across UP except Sirsaganj are empty now and waiting for fresh crop.
- Potato area in West Bengal is higher this year by 6-7% as farmers have shifted paddy to potato.
- Wholesale Potato prices in Azadpur mandi of Delhi are trading in the range of Rs. 500-600/Qtl and retail prices are hovering in the range of Rs. 10-12/Kg

## Potato Prices & Arrivals in Producing & Consumption Centers



(Source: AGRIWATCH)

## Potato Prices & Arrivals in major Mandi as on 10/01/2013

Mandi	Ludhiana	Khandauli	Farrukhabad	Kanpur	Indore	Ahmedabad	Bangalore
Price (in Qtl)	480-540	700-750	485	550-800	500-1100	650-950	1000-1600
Arrivals (in Qtl)	5065	4000	32000	16000	12500	8450	4000

## Potato Prices & Arrivals in major Mandi as on 09/01/2013

Mandi	Ludhiana	Khandauli	Farrukhabad	Kanpur	Indore	Ahmedabad	Bangalore
Price (in Qtl)	400-440	700-800	485	550-750	500-1200	650-1450	1200-1600
Arrivals (in Qtl)	2000	4800	28000	17600	7500	7163	4000

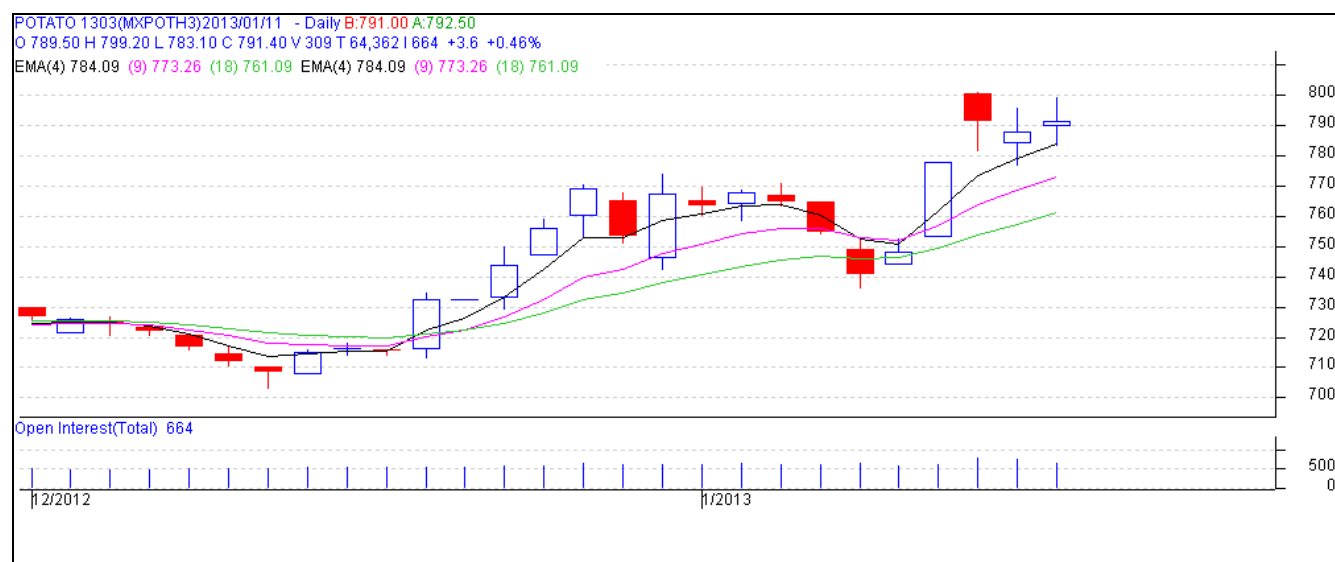
(Source: Agriwatch)

## MCX- Potato Futures Analysis: (as on 10<sup>th</sup> Jan 2013)

Symbol	Exchange	Expiry Date	Today's Close Price	Previous Close Price	Net Change	Today's Open Interest	Previous Day Open Interest	Change
POTATO	MCX	15-Mar-13	786.3	792	-5.70	22800	24570	-1770
POTATO	MCX	15-Apr-13	773.5	763.2	10.30	13860	14940	-1080
POTATO	MCX	15-May-12	781	753.2	27.80	24510	23010	1500
				Total				-1350

(Source: MCX)

## Daily Price Chart of MCX- Agra March Contract:



(Source: AGRIWATCH)

Potato futures of March contract finding resistance near 800 level. But prices are still trading above its 4-day exponential moving average, indicating firmness in prices. Strong support lies at 770 level and on upper side resistance remain same at 800-802 level.



**SFAC**  
लघु कृषक  
कृषि व्यापार संघ

Small Farmers'  
Agribusiness  
Consortium



**AGRIWATCH**

## Potato Prices in major markets – Wholesale vs. Retail as on 9th January 2013

Centre	Wholesale Prices (Rs/ qtl)	Retail Price (Rs/ kg)	Centre	Wholesale Prices (Rs/ qtl)	Retail Price (Rs/ kg)
<b>NORTH ZONE</b>			<b>EAST ZONE</b>		
CHANDIGARH	900	9	PATNA	1100	13
DELHI	663	10	BHAGALPUR	NR	NR
HISAR	800	9	RANCHI	NR	12
KARNAL	800	9	BHUBANESHWAR	880	12
SHIMLA	600	10	CUTTACK	900	12
MANDI	1400	16	SAMBALPUR	800	12
SRINAGAR	NR	20	KOLKATA	850	11
JAMMU	680	15	SILIGURI	800	10
AMRITSAR	600	10	<b>NORTH-EAST ZONE</b>		
LUDHIANA	800	10	ITANAGAR	NR	NR
BATHINDA	400	9	GUWAHATI	NR	10
LUCKNOW	800	10	SHILLONG	1300	18
KANPUR	600	8	AIZWAL	NR	NR
VARANASI	900	10	DIMAPUR	1500	20
AGRA	600	8	AGARTALA	1250	18
DEHRADUN	NR	NR	<b>SOUTH ZONE</b>		
<b>WEST ZONE</b>			PORT BLAIR	2100	24
RAIPUR	1400	16	HYDERABAD	1800	20
PANAJI	NR	NR	VIJAYWADA	1633	18
AHMEDABAD	1300	18	BENGALURU	1900	21
RAJKOT	800	10	DHARWAD	1300	15
BHOPAL	1300	15	T.PURAM	NR	NR
INDORE	1000	15	ERNAKULAM	NR	NR
GWALIOR	NR	NR	KOZHIKODE	NR	NR
JABALPUR	800	14	PUDUCHERRY	1900	20
MUMBAI	1350	22	CHENNAI	1500	20
NAGPUR	1300	15	DINDIGUL	2300	25
JAIPUR	500	10	THIRUCHIRAPALLI	1800	19

(Source: State Civil Supplies Dept)

### Disclaimer

The information contained in this document has been compiled by Agriwatch from sources believed to be reliable, such as NHB, Agmarknet, etc. and directly from traders in mandis. However, users of this data are requested to use the information with due caution and crosscheck with other sources. This document is not, and should not be construed as an offer to sell or buy any commodities. This document may not be reproduced, distributed or published without the express consent of SFAC