

Potato Fundamentals:

- McCain Foods India Pvt.Ltd will invest another \$69 million at its potato processing plant in Mehsana, Gujarat. This investment will be done to expand capacities to meet increasing market demand for frozen snacks. To meet the enhanced plant capacity, McCain Foods will be working with contracted farmers to double the acreage under potato cultivation.
- In Indore, arrivals have increased almost by 50% compared to previous day arrivals and prices are same. Arrivals have increased because farmers have started bringing their produce in market after celebrating 3-4 days festivals.
- In North India, potato wholesale prices are hovering in the range of Rs 600 to Rs 900/ quintal. Maximum prices were seen in Chandigarh at Rs 900/ quintal followed by Karnal and Mandi at Rs 800/ quintal.

Potato Wholesale Prices & Arrivals trend in Consumption Centers



(Source: AGRIWATCH)

Potato Prices & Arrivals in major Mandi as on 17/01/2013

| Mandi | Ludhiana | Khandauli | Farrukhabad | Kanpur | Indore | Ahmedabad | Bangalore |
|-------------------|----------|-----------|-------------|---------|----------|-----------|-----------|
| Price (in Qtl) | 480-520 | 600-650 | 443 | 550-750 | 500-1100 | 750-1050 | 1400-1800 |
| Arrivals (in Qtl) | 2500 | 1920 | 16000 | 11200 | 10000 | 8138 | 2500 |

Potato Prices & Arrivals in major Mandi as on 16/01/2013

| Mandi | Ludhiana | Khandauli | Farrukhabad | Kanpur | Indore | Ahmedabad | Bangalore |
|-------------------|----------|-----------|-------------|---------|----------|-----------|-----------|
| Price (in Qtl) | 480-520 | 700-800 | 445 | 550-750 | 500-1100 | 700-950 | 1400-1800 |
| Arrivals (in Qtl) | 2500 | 4800 | 32000 | 12800 | 5000 | 5611 | 3200 |

(Source: Agriwatch)

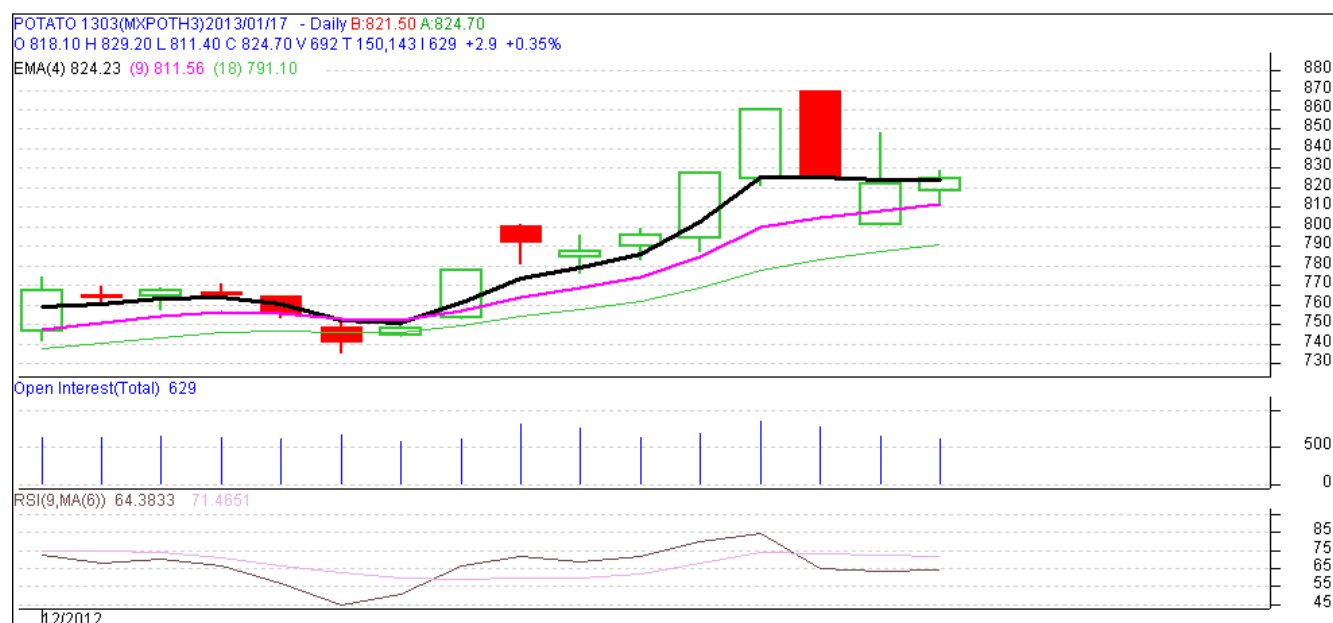
18 January, 2013

MCX- Potato Futures Analysis: (as on 17th Jan 2013)

| Symbol | Exchange | Expiry Date | Today's Close Price | Previous Close Price | Net Change | Today's Open Interest | Previous Day Open Interest | Change |
|--------|----------|-------------|---------------------|----------------------|------------|-----------------------|----------------------------|--------|
| POTATO | MCX | 15-Mar-13 | 824.7 | 823.4 | 1.30 | 18870 | 19530 | -660 |
| POTATO | MCX | 15-Apr-13 | 814 | 821 | -7.00 | 8670 | 9090 | -420 |
| POTATO | MCX | 15-May-12 | 824.2 | 832.2 | -8.00 | 18570 | 23160 | -4590 |
| | | | | Total | | | | -5670 |

(Source: MCX)

Daily Price Chart of MCX- Agra March Contract:



(Source: AGRIWATCH RESEARCH)



SFAC
 लघु कृषक
 कृषि व्यवहार संघ

Small Farmers'
 Agribusiness
 Consortium



AGRIWATCH

Potato Prices in major markets – Wholesale vs. Retail as on 17th January 2013

| Centre | Wholesale Prices (Rs/ qtl) | Retail Price (Rs/ kg) | Centre | Wholesale Prices (Rs/ qtl) | Retail Price (Rs/ kg) |
|-------------------|----------------------------|-----------------------|------------------------|----------------------------|-----------------------|
| NORTH ZONE | | | EAST ZONE | | |
| CHANDIGARH | 900 | 9 | PATNA | 1100 | 13 |
| DELHI | 688 | 10 | BHAGALPUR | 800 | 10 |
| HISAR | 800 | 9 | RANCHI | NR | 10 |
| KARNAL | 800 | 10 | BHUBANESHWAR | 900 | 12 |
| SHIMLA | 600 | 10 | CUTTACK | 850 | 12 |
| MANDI | 800 | 10 | SAMBALPUR | 860 | 12 |
| SRINAGAR | NR | 20 | KOLKATA | 700 | 10 |
| JAMMU | 680 | 15 | SILIGURI | 800 | 10 |
| AMRITSAR | 600 | 10 | NORTH-EAST ZONE | | |
| LUDHIANA | 800 | 10 | ITANAGAR | NR | NR |
| BATHINDA | 400 | 8 | GUWAHATI | NR | 12 |
| LUCKNOW | 800 | 10 | SHILLONG | 1300 | 18 |
| KANPUR | 600 | 8 | AIZWAL | NR | NR |
| VARANASI | 900 | 10 | DIMAPUR | 1500 | 20 |
| AGRA | 700 | 10 | AGARTALA | 1200 | 17 |
| DEHRADUN | 600 | 10 | SOUTH ZONE | | |
| WEST ZONE | | | PORT BLAIR | NR | NR |
| RAIPUR | 1400 | 16 | HYDERABAD | 1600 | 18 |
| PANAJI | NR | NR | VIJAYWADA | 1533 | 17 |
| AHMEDABAD | 1300 | 18 | BENGALURU | NR | NR |
| RAJKOT | 950 | 12 | DHARWAD | NR | NR |
| BHOPAL | 1300 | 15 | T.PURAM | 2500 | 27 |
| INDORE | 1050 | 15 | ERNAKULAM | 2300 | 25 |
| GWALIOR | NR | NR | KOZHIKODE | 1900 | 23 |
| JABALPUR | 1200 | 14 | PUDUCHERRY | NR | NR |
| MUMBAI | 1150 | 18 | CHENNAI | 1500 | 20 |
| NAGPUR | 1300 | 15 | DINDIGUL | 2300 | 25 |
| | | | | 1800 | 19 |
| JAIPUR | 500 | 10 | THIRUCHIRAPALLI | | |

(Source: State Civil Supplies Dept)

Disclaimer

The information contained in this document has been compiled by Agriwatch from sources believed to be reliable, such as NHB, Agmarknet, etc. and directly from traders in mandis. However, users of this data are requested to use the information with due caution and crosscheck with other sources. This document is not, and should not be construed as an offer to sell or buy any commodities. This document may not be reproduced, distributed or published without the express consent of SFAC