

### Potato Fundamentals:

- In MCX, March contract prices have hit upper circuit by 4% as speculators are taking long positions due to lower arrivals in spot markets which have also affected futures market.
- Arrivals which were low 4-5 days back have started recovering in all the markets as festive seasons are over and farmers are bringing maximum of their produce in the markets.
- In Bangalore, arrivals are coming from Indore, Hyderabad and local region which are contributing approximately 30%, 50% and 20% respectively. According to trade sources, maximum prices are being fetched by local region potato at Rs 1600 to Rs 1800/ quintal.
- In North East region maximum retail prices were seen in Dimapur at Rs 2000/ quintal and lowest prices were at Guwahati at Rs 1200/ quintal.

### Potato Wholesale Prices & Arrivals trend in Consumption Centers



(Source: AGRIWATCH)

### Potato Prices & Arrivals in major Mandi as on 18/01/2013

Mandi	Ludhiana	Khandauli	Farrukhabad	Kanpur	Indore	Ahmedabad	Bangalore
Price (in Qtl)	480-520	600-700	475-525	550-750	500-1200	750-1050	1200-2000
Arrivals (in Qtl)	2500	2000	10000	18000	12500	8138	6000

### Potato Prices & Arrivals in major Mandi as on 17/01/2013

Mandi	Ludhiana	Khandauli	Farrukhabad	Kanpur	Indore	Ahmedabad	Bangalore
Price (in Qtl)	480-520	600-650	443	550-750	500-1100	750-1050	1400-1800
Arrivals (in Qtl)	2500	1920	16000	11200	10000	8138	2500

(Source: Agriwatch)

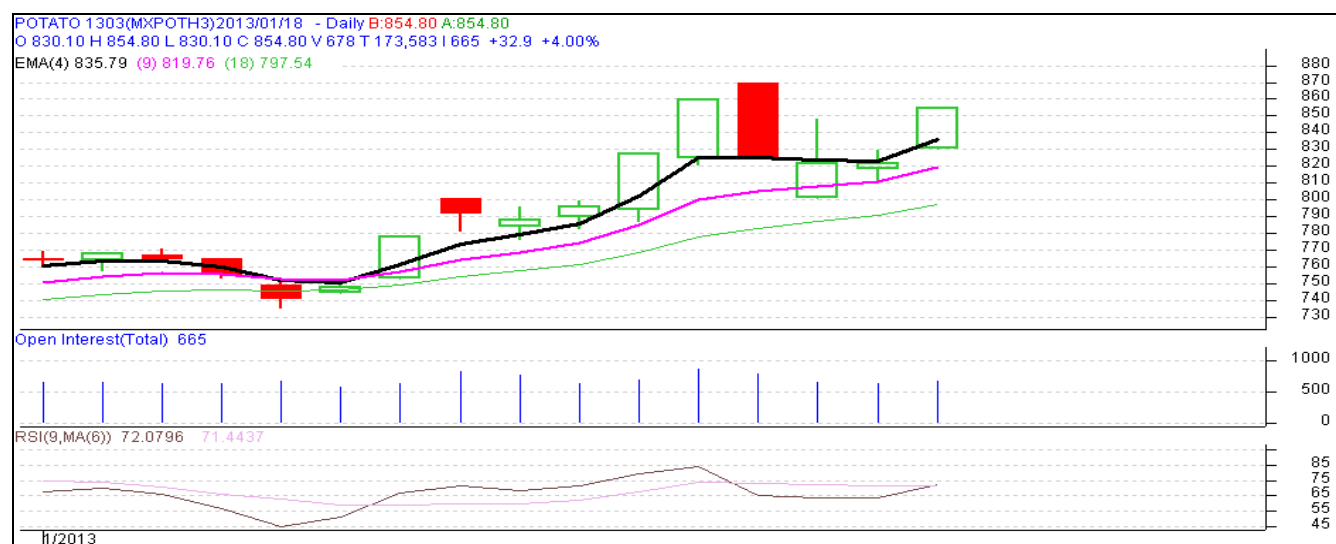
19 January, 2013

## MCX- Potato Futures Analysis: (as on 18th Jan 2013)

Symbol	Exchange	Expiry Date	Today's Close Price	Previous Close Price	Net Change	Today's Open Interest	Previous Day Open Interest	Change
POTATO	MCX	15-Mar-13	854.8	824.7	30.10	19950	18870	1080
POTATO	MCX	15-Apr-13	845.1	814	31.10	8880	8670	210
POTATO	MCX	15-May-12	855.1	824.2	30.90	18480	18570	-90
				Total				1200

(Source: MCX)

## Daily Price Chart of MCX- Agra March Contract:



(Source: AGRIWATCH RESEARCH)

## Potato Prices in major markets – Wholesale vs. Retail as on 18th January 2013

Centre	Wholesale Prices (Rs/ qtl)	Retail Price (Rs/ kg)	Centre	Wholesale Prices (Rs/ qtl)	Retail Price (Rs/ kg)
<b>NORTH ZONE</b>			<b>EAST ZONE</b>		
CHANDIGARH	NR	NR	PATNA	NR	NR
DELHI	750	10	BHAGALPUR	NR	NR
HISAR	NR	NR	RANCHI	NR	NR
KARNAL	NR	NR	BHUBANESHWAR	NR	NR
SHIMLA	NR	NR	CUTTACK	NR	NR
MANDI	NR	NR	SAMBALPUR	NR	NR
SRINAGAR	NR	NR	KOLKATA	700	10
JAMMU	NR	NR	SILIGURI	800	10
AMRITSAR	600	10	<b>NORTH-EAST ZONE</b>		
LUDHIANA	NR	NR	ITANAGAR	1000	15
BATHINDA	NR	NR	GUWAHATI	NR	12
LUCKNOW	800	10	SHILLONG	1300	18
KANPUR	600	8	AIZWAL	NR	NR
VARANASI	900	10	DIMAPUR	1500	20
AGRA	700	10	AGARTALA	1100	16
DEHRADUN	NR	NR	<b>SOUTH ZONE</b>		
<b>WEST ZONE</b>			PORT BLAIR	NR	24
RAIPUR	1400	16	HYDERABAD	1600	18
PANAJI	NR	NR	VIJAYWADA	1617	18
AHMEDABAD	1300	18	BENGALURU	1800	20
RAJKOT	935	12	DHARWAD	1650	18
BHOPAL	1300	15	T.PURAM	2500	27
INDORE	1050	15	ERNAKULAM	2300	25
GWALIOR	NR	NR	KOZHIKODE	1800	24
JABALPUR	1200	14	PUDUCHERRY	2000	22
MUMBAI	1150	18	CHENNAI	1500	20
NAGPUR	1300	15	DINDIGUL	2300	25
JAIPUR	NR	NR	THIRUCHIRAPALLI	1800	19

(Source: State Civil Supplies Dept)

## Disclaimer

The information contained in this document has been compiled by Agriwatch from sources believed to be reliable, such as NHB, Agmarknet, etc. and directly from traders in mandis. However, users of this data are requested to use the information with due caution and crosscheck with other sources. This document is not, and should not be construed as an offer to sell or buy any commodities. This document may not be reproduced, distributed or published without the express consent of SFAC