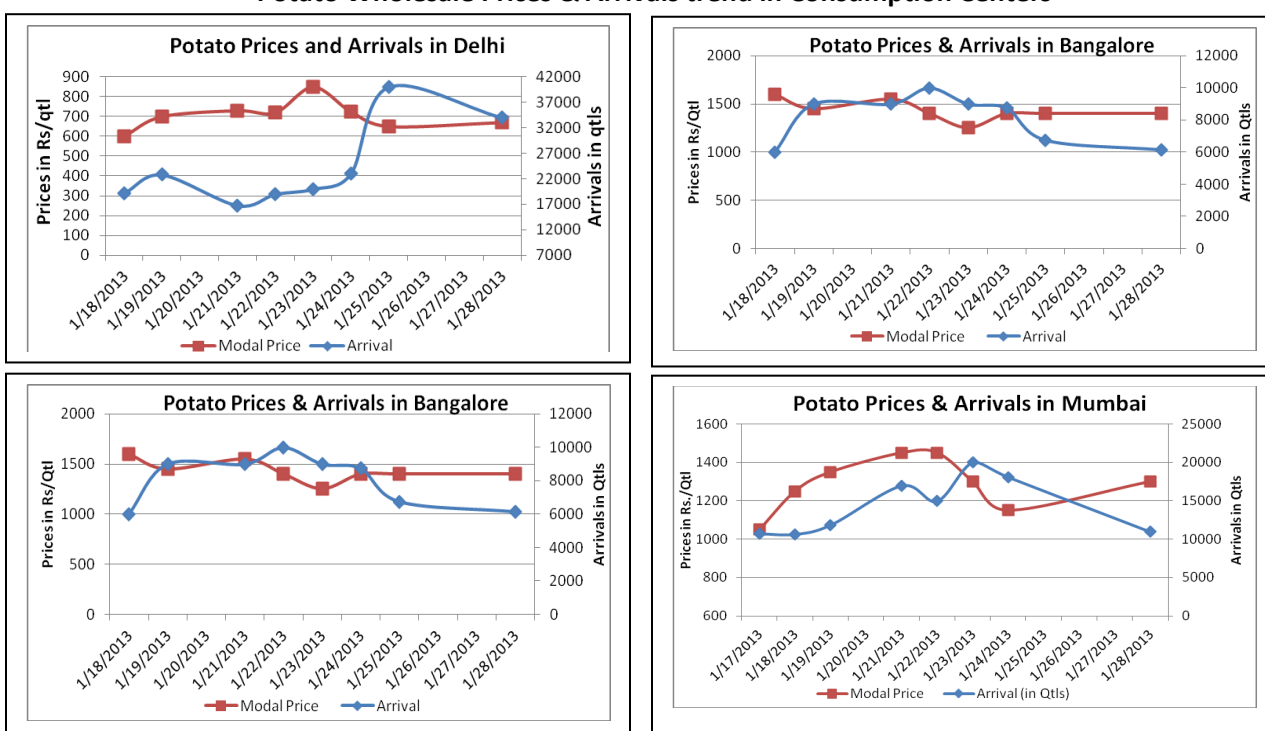


Potato Fundamentals:

- In Pune, potato is mainly coming from different parts of Maharashtra and Indore which are contributing approximately 80% and 20% to the total arrival. Prices are hovering in the range of Rs 900 to Rs 1400/ quintal and expected to decline ahead as arrival from U.P starts in full swing.
- In Delhi, potatoes are arriving in market from U.P, Punjab and Haryana. Among the total arrivals U.P is contributing approximately 50% whereas rest is from Punjab and Haryana.
- In Western India, lowest prices are in Rajkot at Rs 805/ quintal followed by Indore at Rs 1050/ quintal. Whereas in other parts of West India prices are above Rs 1300/ quintal.
- In North India, maximum wholesale prices were seen in Chandigarh at Rs 1300/ quintal followed by Varanasi and Karnal at Rs 900 and Rs 830/ quintal respectively.

Potato Wholesale Prices & Arrivals trend in Consumption Centers



(Source: AGRIWATCH)

Potato Prices & Arrivals in major Mandi as on 28/01/2013

Mandi	Ludhiana	Khandauli	Farrukhabad	Kanpur	Indore	Ahmedabad	Bangalore
Price (in Qtl)	500-550	750-800	451-581	550-750	500-1000	700-900	1000-1800
Arrivals (in Qtl)	5000	6000	20000	29000	9000	5158	6150

Potato Prices & Arrivals in major Mandi as on 25/01/2013

Mandi	Ludhiana	Khandauli	Farrukhabad	Kanpur	Indore	Ahmedabad	Bangalore
Price (in Qtl)	550-650	700-800	451-581	500-700	Close	500-800	1000-1800
Arrivals (in Qtl)	3500	6000	20000	10000	Close	7805	6750

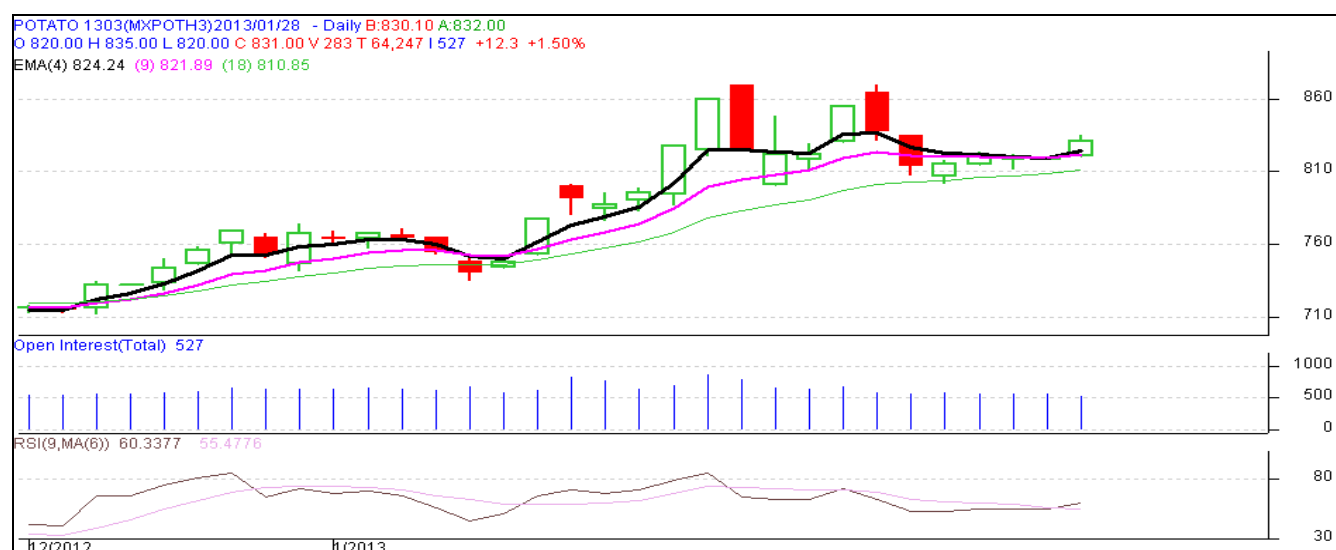
(Source: Agriwatch)

MCX- Potato Futures Analysis: (as on 28th Jan 2013)

Symbol	Exchange	Expiry Date	Today's Close Price	Previous Close Price	Net Change	Today's Open Interest	Previous Day Open Interest	Change
POTATO	MCX	15-Mar-13	831	818.7	12.30	15810	17010	-1200
POTATO	MCX	15-Apr-13	821	806.3	14.70	10680	10530	150
POTATO	MCX	15-May-12	821	806.2	14.80	20130	19410	720
				Total				-330

(Source: MCX)

Daily Price Chart of MCX- Agra March Contract:



(Source: AGRIWATCH RESEARCH)

In MCX, March contract has increased and expected to rise ahead as RSI is indicating bullishness in market. Moving averages are also upward which suggest long positions in market. On the upper side prices have find a resistance near 835 levels. Once this level is breached prices may rise upward. On the lower side, prices have found a support near level of 815.

Potato Prices in major markets – Wholesale vs. Retail as on 28th January 2013

Centre	Wholesale Prices (Rs/ qtl)	Retail Price (Rs/ kg)	Centre	Wholesale Prices (Rs/ qtl)	Retail Price (Rs/ kg)
NORTH ZONE			EAST ZONE		
CHANDIGARH	1300	15	PATNA	1100	13
DELHI	750	12	BHAGALPUR	600	8
HISAR	800	9	RANCHI	NR	10
KARNAL	830	10	BHUBANESHWAR	1050	14
SHIMLA	600	10	CUTTACK	NR	NR
MANDI	800	10	SAMBALPUR	880	12
SRINAGAR	NR	20	KOLKATA	700	10
JAMMU	NR	NR	SILIGURI	800	10
AMRITSAR	550	9	NORTH-EAST ZONE		
LUDHIANA	NR	NR	ITANAGAR	NR	NR
BATHINDA	400	7	GUWAHATI	NR	12
LUCKNOW	800	10	SHILLONG	1300	18
KANPUR	600	8	AIZWAL	NR	NR
VARANASI	900	10	DIMAPUR	1100	18
AGRA	700	10	AGARTALA	1100	16
DEHRADUN	NR	NR	SOUTH ZONE		
WEST ZONE			PORT BLAIR	2100	24
RAIPUR	1400	16	HYDERABAD	1600	18
PANAJI	NR	NR	VIJAYWADA	1500	17
AHMEDABAD	1300	18	BENGALURU	1800	20
RAJKOT	805	10	DHARWAD	1650	18
BHOPAL	1300	15	T.PURAM	NR	NR
INDORE	1050	15	ERNAKULAM	NR	NR
GWALIOR	1600	20	KOZHIKODE	NR	NR
JABALPUR	1300	15	PUDUCHERRY	1900	20
MUMBAI	1300	20	CHENNAI	1500	20
NAGPUR	1300	15	DINDIGUL	2300	25
JAIPUR	500	10	THIRUCHIRAPALLI	1800	19

(Source: State Civil Supplies Dept)

Disclaimer

The information contained in this document has been compiled by Agriwatch from sources believed to be reliable, such as NHB, Agmarknet, etc. and directly from traders in mandis. However, users of this data are requested to use the information with due caution and crosscheck with other sources. This document is not, and should not be construed as an offer to sell or buy any commodities. This document may not be reproduced, distributed or published without the express consent of SFAC