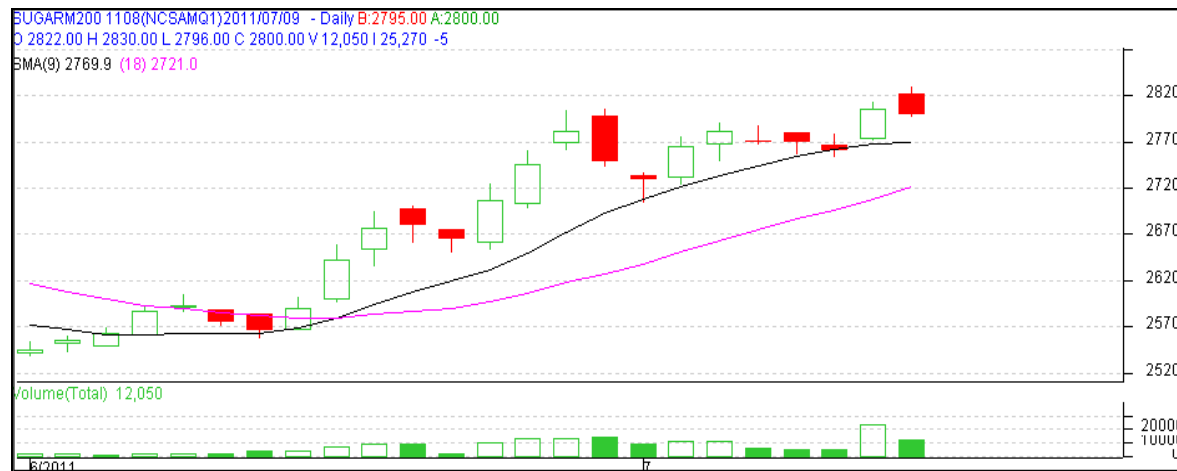


Commodity: Sugar
Contract: August
Exchange: NCDEX
Expiry: August 20th, 2011
SUGAR

Technical Commentary:

- Range bound movement recorded in sugar prices. Prices are moving in consolidation phase..
- Prices trading above 9 and 18 day EMA further suggests bullishness.
- However, RSI is in a overbought region which suggests bearishness in the prices.

Strategy: Sell from resistance level is advisable.

Intraday Supports & Resistances			S2	S1	PCP	R1	R2
Sugar	NCDEX	August	2766	2883	2800	2819	2840
Intraday Trade Call			Call	Entry	T1	T2	SL
Sugar	NCDEX	August	Sell	<2807	2883	2766	2819

Do not carry forward the position until the next day.

Commodity: Gur
Contract: September
Exchange: NCDEX
Expiry: September 20th, 2011
GUR

Technical Commentary:

- Gur prices are moving in a range between Rs. 975 to Rs.1036, if breached the level either side will decide the prices of the movement further.
- However, RSI is in overbought region which further indicates bearishness in the prices.

Strategy: Sell from resistance level would be advisable.

Intraday Supports & Resistances			S2	S1	PCP	R1	R2
Gur	NCDEX	September	1020.5	1023	1026.5	1031	1036
Intraday Trade Call			Call	Entry	T1	T2	SL
Gur	NCDEX	September	Sell	<1028	1023	1020.5	1031

Do not carry forward the position until the next day.

Disclaimer

The information and opinions contained in the document have been compiled from sources believed to be reliable. The company does not warrant its accuracy, completeness and correctness. Use of data and information contained in this report is at your own risk. This document is not, and should not be construed as, an offer to sell or solicitation to buy any commodities. This document may not be reproduced, distributed or published, in whole or in part, by any recipient hereof for any purpose without prior permission from the Company. IASL and its affiliates and/or their officers, directors and employees may have positions in any commodities mentioned in this document (or in any related investment) and may from time to time add to or dispose of any such commodities (or investment). Please see the detailed disclaimer at <http://www.agriwatch.com/Disclaimer.asp>