

Commodity: Soybean
Contract: Dec
Exchange: NCDEX
Expiry: Dec 20th, 2011
SOYBEAN
Technical Commentary:

- Candlestick chart pattern reveals prices in down-trend.
- Prices closed below 9-day and 18-day EMA indicating bearish momentum in near and medium-term.
- RSI is rising in neutral region while stochastic is easing in neutral zone.
- MACD is flattering in negative territory.

Soybean prices are likely to ease in Thursday's session.


Strategy: Sell on rise.

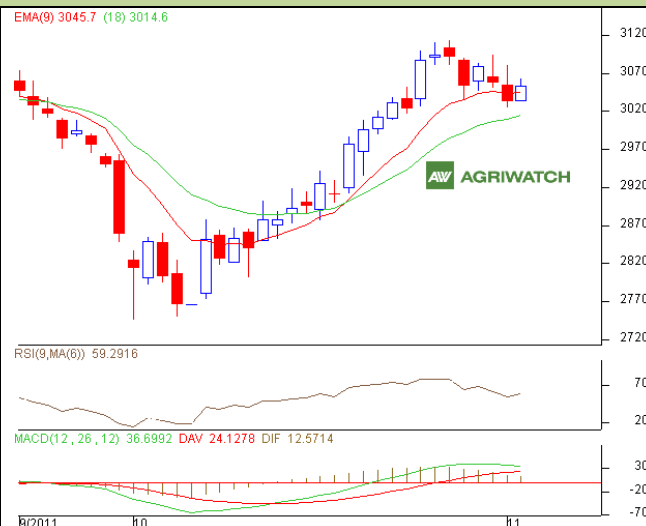
Intraday Supports & Resistances			S1	S2	PCP	R1	R2
Soybean	NCDEX	Dec	2177	2134	2203	2246	2280
Intraday Trade Call			Call	Entry	T1	T2	SL
Soybean	NCDEX	Dec	SELL	2204-2206	2195	2190	2210

* Do not carry-forward the position next day.

Commodity: Rapeseed/Mustard
Exchange: NCDEX
Contract: Nov
Expiry: Nov 20th, 2011
RM SEED
Technical Commentary:

- Candlestick chart pattern reveals buying interest in the market.
- Prices closed above 9-day and 18-day EMA reflecting bullish momentum medium-term.
- RSI is rising in neutral region while stochastic is easing in neutral zone.
- MACD is rising in positive zone.

RM seed prices are likely to gain in Thursday's session.


Strategy: Buy on dips.

Intraday Supports & Resistances			S1	S2	PCP	R1	R2
RM Seed	NCDEX	Nov	3012	2983	3050	3074	3107
Intraday Trade Call			Call	Entry	T1	T2	SL
RM Seed	NCDEX	Nov	BUY	3047-3049	3058	3063	3043

* Do not carry-forward the position next day.

Disclaimer

The information and opinions contained in the document have been compiled from sources believed to be reliable. The company does not warrant its accuracy, completeness and correctness. Use of data and information contained in this report is at your own risk. This document is not, and should not be construed as, an offer to sell or solicitation to buy any commodities. This document may not be reproduced, distributed or published, in whole or in part, by any recipient hereof for any purpose without prior permission from the Company. IASL and its affiliates and/or their officers, directors and employees may have positions in any commodities mentioned in this document (or in any related investment) and may from time to time add to or dispose of any such commodities (or investment). Please see the detailed disclaimer at <http://www.agriwatch.com/Disclaimer.asp>
 © 2005 Indian Agribusiness Systems Pvt Ltd.