

Commodity: Soybean  
Contract: Jan

Exchange: NCDEX  
Expiry: Jan 20<sup>th</sup>, 2011

## SOYBEAN

### Technical Commentary:

- Candlestick chart pattern reveals selling pressure in the market.
- Prices closed above 9-day and 18-day EMA indicating bullish momentum in near and medium-term.
- RSI is easing in neutral region while stochastic are falling in overbought zone.
- MACD is flattering in positive territory.

*The soybean prices are likely to ease on Monday's session.*



**Strategy:** Sell on rise.

Intraday Supports & Resistances			S1	S2	PCP	R1	R2
Soybean	NCDEX	Jan	2280	2259	2303	2335	2358
Intraday Trade Call			Call	Entry	T1	T2	SL
Soybean	NCDEX	Jan	<b>SELL</b>	2300-2302	2291	2286	2306

\* Do not carry-forward the position next day.

Commodity: Rapeseed/Mustard

Exchange: NCDEX

Contract: Jan

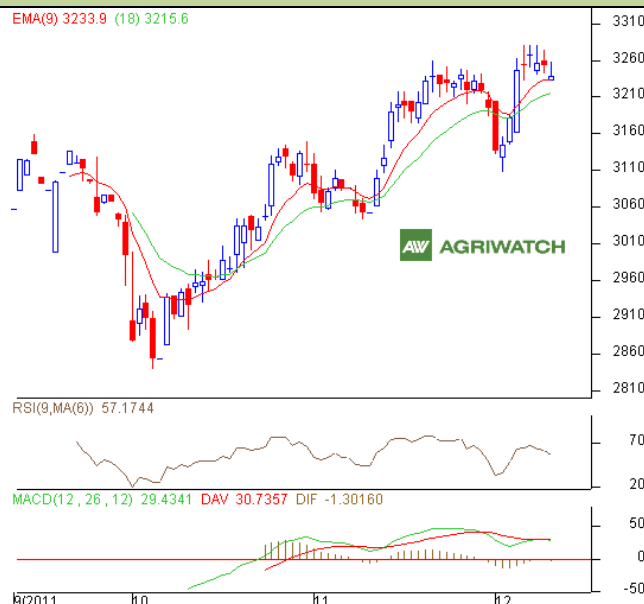
Expiry: Jan 20<sup>th</sup>, 2011

## RM SEED

### Technical Commentary:

- Candlestick chart pattern reflects down-wards move in the prices.
- Prices closed above 9-day and 18-day EMA reflecting bullish momentum near and medium-term.
- RSI is easing in neutral region while stochastic is declining in overbought zone.
- MACD is easing in positive territory.

*The RM prices are likely to ease in Monday's session.*



**Strategy:** Sell on rise.

Intraday Supports & Resistances			S1	S2	PCP	R1	R2
RM Seed	NCDEX	Jan	3210	3189	3239	3281	3295
Intraday Trade Call			Call	Entry	T1	T2	SL
RM Seed	NCDEX	Jan	<b>SELL</b>	3236-3238	3227	3222	3242

\* Do not carry-forward the position next day.

### Disclaimer

The information and opinions contained in the document have been compiled from sources believed to be reliable. The company does not warrant its accuracy, completeness and correctness. Use of data and information contained in this report is at your own risk. This document is not, and should not be construed as, an offer to sell or solicitation to buy any commodities. This document may not be reproduced, distributed or published, in whole or in part, by any recipient hereof for any purpose without prior permission from the Company. IASL and its affiliates and/or their officers, directors and employees may have positions in any commodities mentioned in this document (or in any related investment) and may from time to time add to or dispose of any such commodities (or investment). Please see the detailed disclaimer at <http://www.agriwatch.com/Disclaimer.asp>  
© 2005 Indian Agribusiness Systems Pvt Ltd.