

Commodity: Soybean
Contract: Jan
Exchange: NCDEX
Expiry: Jan 20th, 2012
SOYBEAN
Technical Commentary:

- Candlestick chart pattern reveals buying support in the market.
- Prices closed above 9-day and 18-day EMA indicating bullish momentum in near and medium-term.
- RSI and stochastic are rising in neutral zone.
- MACD is rising in positive territory.

The soybean prices are likely to gain on Wednesday's session.


Strategy: Buy on dips.

Intraday Supports & Resistances			S1	S2	PCP	R1	R2
Soybean	NCDEX	Jan	2411	2389	2445	2470	2480
Intraday Trade Call			Call	Entry	T1	T2	SL
Soybean	NCDEX	Jan	BUY	2447-2449	2458	2463	2443

* Do not carry-forward the position next day.

Commodity: Rapeseed/Mustard

Exchange: NCDEX

Contract: Jan

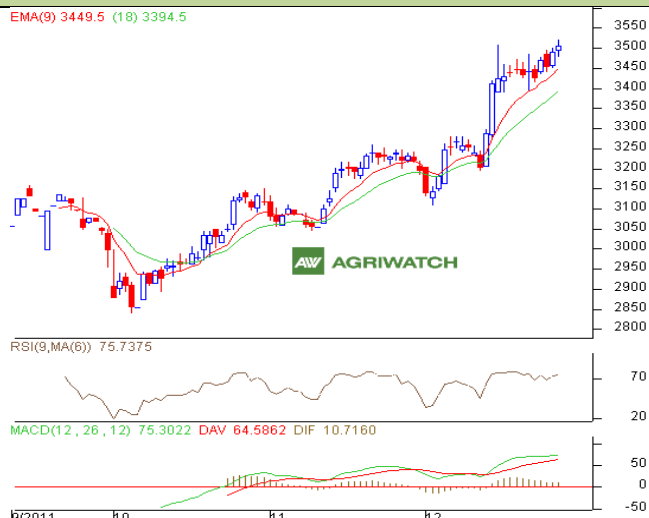
Expiry: Jan 20th, 2012

RM SEED

Technical Commentary:

- Candlestick chart pattern reflects buying support in the market.
- Prices closed above 9-day and 18-day EMA reflecting bullish momentum near and medium-term.
- RSI and stochastic are heading upwards in neutral zone.
- MACD is heading upwards in positive territory.

The RM prices are likely to gain in Wednesday's session.



Strategy: Buy on dips.

Intraday Supports & Resistances			S1	S2	PCP	R1	R2
RM Seed	NCDEX	Jan	3417	3388	3505	3540	3550
Intraday Trade Call			Call	Entry	T1	T2	SL
RM Seed	NCDEX	Jan	BUY	3507-3509	3517	3522	3503

* Do not carry-forward the position next day.

Disclaimer

The information and opinions contained in the document have been compiled from sources believed to be reliable. The company does not warrant its accuracy, completeness and correctness. Use of data and information contained in this report is at your own risk. This document is not, and should not be construed as, an offer to sell or solicitation to buy any commodities. This document may not be reproduced, distributed or published, in whole or in part, by any recipient hereof for any purpose without prior permission from the Company. IASL and its affiliates and/or their officers, directors and employees may have positions in any commodities mentioned in this document (or in any related investment) and may from time to time add to or dispose of any such commodities (or investment). Please see the detailed disclaimer at <http://www.agriwatch.com/Disclaimer.asp>
© 2005 Indian Agribusiness Systems Pvt Ltd.