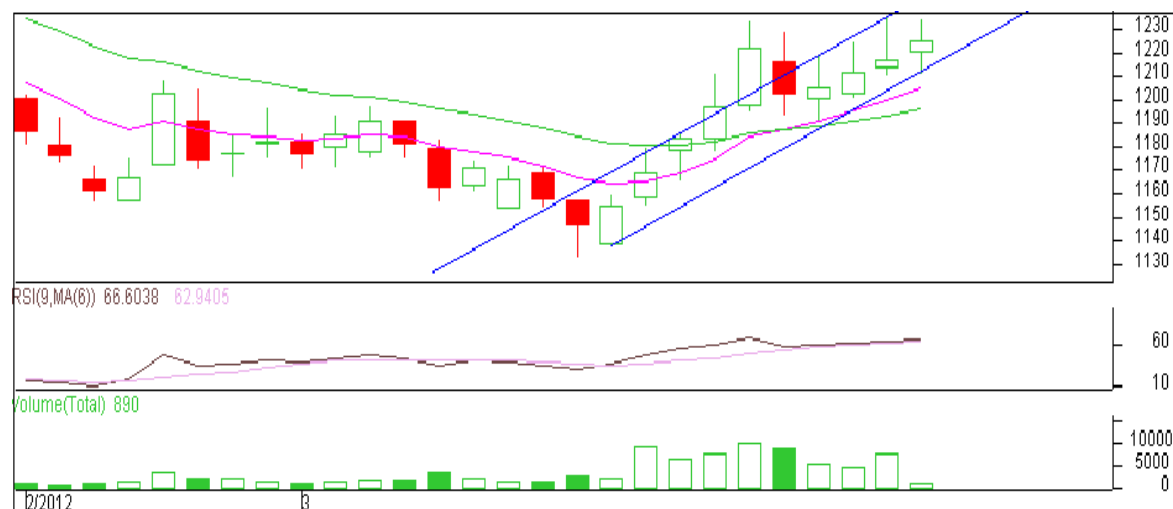


**Commodity: Maize**  
**Contract: April**
**Exchange: NCDEX**  
**Expiry: April 20<sup>th</sup>, 2011**
**Maize**

**Technical Commentary:**

- Prices are moving in a range between Rs 1190 to 1230, two consecutive close either side of the channel will decide the new direction of the prices further.
- Increase in prices along with OI suggests that fresh buying occurs from support level.
- RSI is hovering near to neutral region.

**Strategy:** Buy from entry level.

Intraday Supports & Resistances			S2	S1	PCP	R1	R2
Maize	NCDEX	April	1130	1190	1217	1225	1250
Intraday Trade Call			Call	Entry	T1	T2	SL
Maize	NCDEX	April	Buy	Above 1213	1220	1223	1210

Do not carry forward the position until the next day.

**Disclaimer**

The information and opinions contained in the document have been compiled from sources believed to be reliable. The company does not warrant its accuracy, completeness and correctness. Use of data and information contained in this report is at your own risk. This document is not, and should not be construed as, an offer to sell or solicitation to buy any commodities. This document may not be reproduced, distributed or published, in whole or in part, by any recipient hereof for any purpose without prior permission from the Company. IASL and its affiliates and/or their officers, directors and employees may have positions in any commodities mentioned in this document (or in any related investment) and may from time to time add to or dispose of any such commodities (or investment). Please see the detailed disclaimer at <http://www.agriwatch.com/Disclaimer.asp>

© 2005 Indian Agribusiness Systems Pvt Ltd.