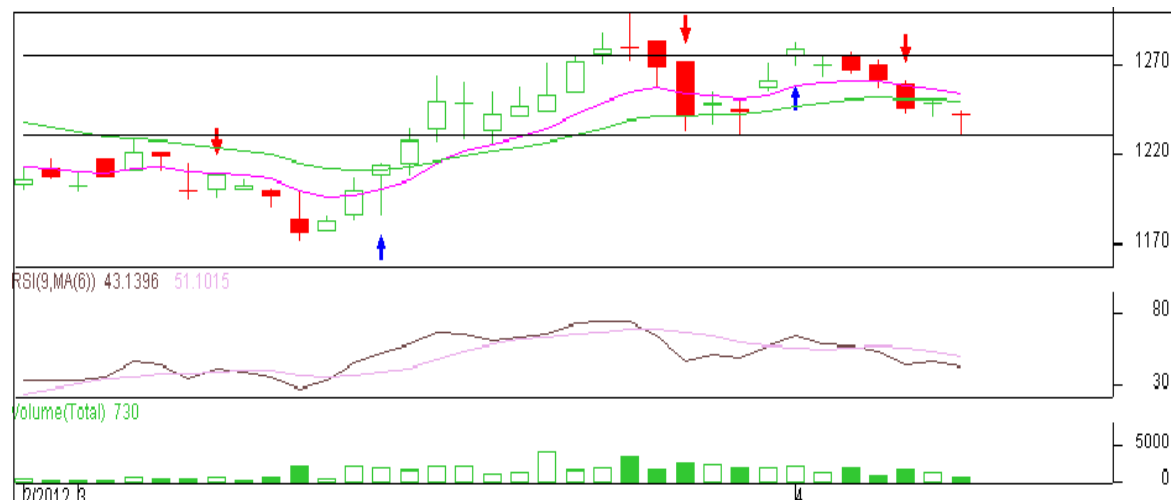


**Commodity: Maize**  
**Contract: May**
**Exchange: NCDEX**  
**Expiry: May 18<sup>th</sup>, 2012**
**Maize**

**Technical Commentary:**

- Prices are moving in a range between Rs 1230 to 1283, two consecutive closes either side of the range will decide the new direction of the prices further.
- RSI is hovering near to neutral region.

**Strategy:** Sell from entry level.

| Intraday Supports & Resistances |       |     | S2          | S1         | PCP  | R1   | R2   |
|---------------------------------|-------|-----|-------------|------------|------|------|------|
| Maize                           | NCDEX | May | 1215        | 1230       | 1249 | 1263 | 1284 |
| Intraday Trade Call             |       |     | Call        | Entry      | T1   | T2   | SL   |
| Maize                           | NCDEX | May | <b>Sell</b> | Below 1246 | 1240 | 1237 | 1249 |

Do not carry forward the position until the next day.

**Disclaimer**

The information and opinions contained in the document have been compiled from sources believed to be reliable. The company does not warrant its accuracy, completeness and correctness. Use of data and information contained in this report is at your own risk. This document is not, and should not be construed as, an offer to sell or solicitation to buy any commodities. This document may not be reproduced, distributed or published, in whole or in part, by any recipient hereof for any purpose without prior permission from the Company. IASL and its affiliates and/or their officers, directors and employees may have positions in any commodities mentioned in this document (or in any related investment) and may from time to time add to or dispose of any such commodities (or investment). Please see the detailed disclaimer at <http://www.agriwatch.com/Disclaimer.asp>  
 © 2005 Indian Agribusiness Systems Pvt Ltd.