

Commodity: Soybean
Contract: Feb

Exchange: NCDEX
Expiry: Feb 20th, 2012

SOYBEAN

Technical Commentary:

- Candlestick chart pattern reveals uptrend in the price.
- Prices closed above 9-day and 18-day EMA indicating bullish momentum in near and medium-term.
- RSI is rising in neutral region while stochastic is easing in neutral zone.
- MACD is declining in positive territory.

The soybeans prices are likely gain in Wednesday's session.



Strategy: Buy on dips.

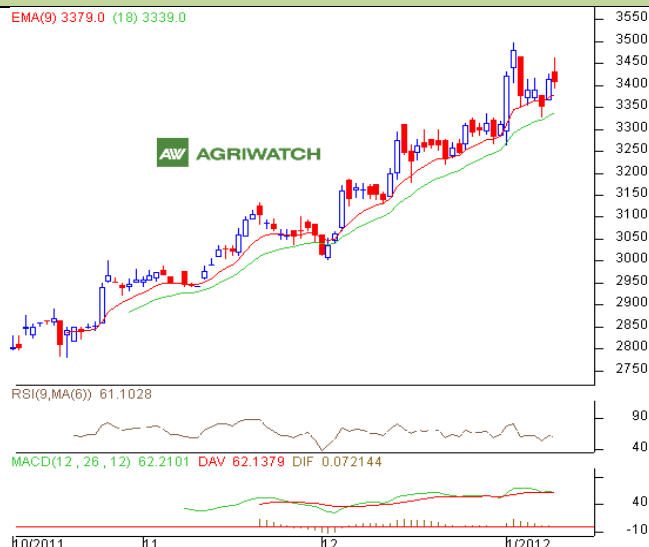
Intraday Supports & Resistances			S1	S2	PCP	R1	R2
Soybean	NCDEX	Feb	2530	2509	2572.5	2643	2660
Intraday Trade Call			Call	Entry	T1	T2	SL
Soybean	NCDEX	Feb	BUY	2575-2577	2586	2591	2571

* Do not carry-forward the position next day.

Commodity: Rapeseed/Mustard
Exchange: NCDEX
Contract: Apr
Expiry: Apr 20th, 2012
RM SEED
Technical Commentary:

- Candlestick chart pattern reflects selling pressure in the market.
- Prices closed above 9-day and 18-day EMA reflecting bearish momentum in near and medium-term.
- RSI is easing in neutral region while stochastic is slightly rising in neutral territory.
- MACD is falling in positive region.

The RM prices are likely to fall in Wednesday's session.


Strategy: Sell on rise.

Intraday Supports & Resistances			S1	S2	PCP	R1	R2
RM Seed	NCDEX	Apr	3350	3313	3407	3498	3510
Intraday Trade Call			Call	Entry	T1	T2	SL
RM Seed	NCDEX	Apr	SELL	3403-3405	3393	3388	3408

* Do not carry-forward the position next day.

Disclaimer

The information and opinions contained in the document have been compiled from sources believed to be reliable. The company does not warrant its accuracy, completeness and correctness. Use of data and information contained in this report is at your own risk. This document is not, and should not be construed as, an offer to sell or solicitation to buy any commodities. This document may not be reproduced, distributed or published, in whole or in part, by any recipient hereof for any purpose without prior permission from the Company. IASL and its affiliates and/or their officers, directors and employees may have positions in any commodities mentioned in this document (or in any related investment) and may from time to time add to or dispose of any such commodities (or investment). Please see the detailed disclaimer at <http://www.agriwatch.com/Disclaimer.asp>
 © 2005 Indian Agribusiness Systems Pvt Ltd.