

Commodity: Soybean
Contract: Nov

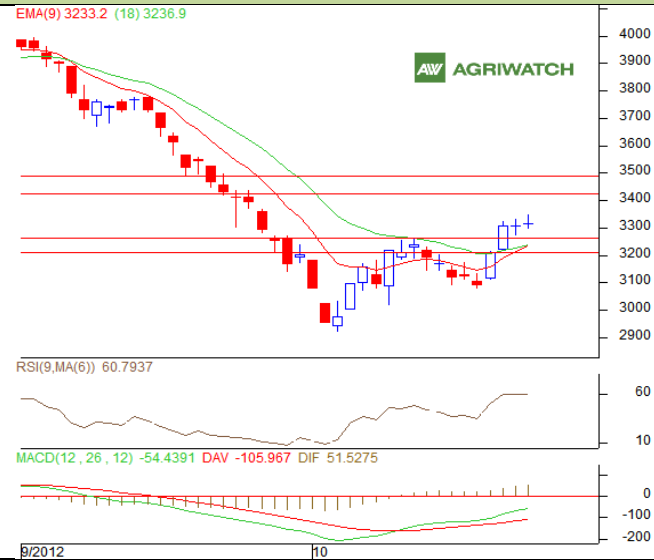
Exchange: NCDEX
Expiry: Nov 20th, 2012

SOYBEAN

Technical Commentary:

- Candlestick chart pattern indicates indecision in the market.
- Prices closed above 9-day and 18-day EMA.
- RSI is flattening in neutral region while stochastic is rising in neutral zone.
- MACD is heading up in negative territory.

The soybeans prices are likely to feature range-bound movement in Tuesday's session.



Strategy: Stay Away.

Intraday Supports & Resistances			S1	S2	PCP	R1	R2
Soybean	NCDEX	Nov	3255	3206	3316.5	3424	3488
Intraday Trade Call			Call	Entry	T1	T2	SL
Soybean	NCDEX	Nov	SA	-	-	-	-

* Do not carry-forward the position next day.

Commodity: Rapeseed/Mustard
Contract: Nov
Exchange: NCDEX
Expiry: Nov 20th, 2012
RM SEED
Technical Commentary:

- Candlestick chart pattern reflects close above previous day.
- Prices closed above 9-day and 18-day EMA.
- RSI is rising in neutral region while stochastic is easing in neutral zone.
- MACD is heading up in positive territory.

The RM seed prices are expected gain in Tuesday's session.


Strategy: Buy on dips.

Intraday Supports & Resistances			S1	S2	PCP	R1	R2
RM Seed	NCDEX	Nov	4194	4129	4257	4308	4361
Intraday Trade Call			Call	Entry	T1	T2	SL
RM Seed	NCDEX	Nov	BUY	4250-4252	4261	4266	4246

* Do not carry-forward the position next day.

Disclaimer

The information and opinions contained in the document have been compiled from sources believed to be reliable. The company does not warrant its accuracy, completeness and correctness. Use of data and information contained in this report is at your own risk. This document is not, and should not be construed as, an offer to sell or solicitation to buy any commodities. This document may not be reproduced, distributed or published, in whole or in part, by any recipient hereof for any purpose without prior permission from the Company. IASL and its affiliates and/or their officers, directors and employees may have positions in any commodities mentioned in this document (or in any related investment) and may from time to time add to or dispose of any such commodities (or investment). Please see the detailed disclaimer at <http://www.agriwatch.com/Disclaimer.asp>

© 2005 Indian Agribusiness Systems Pvt Ltd.