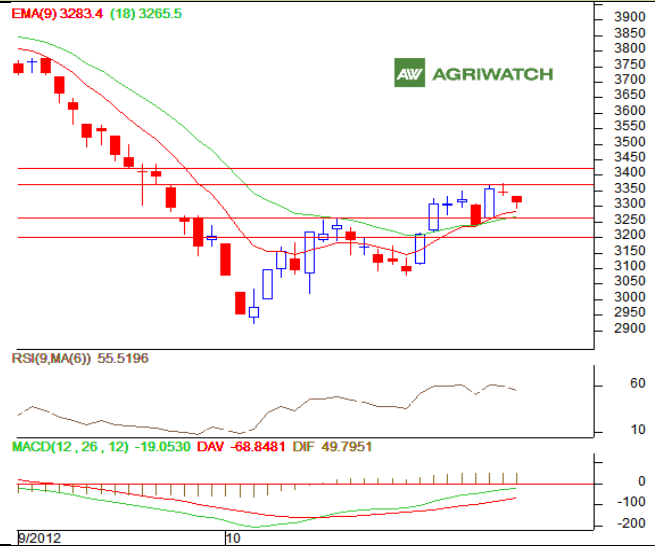


**Commodity: Soybean**  
**Contract: Nov**
**Exchange: NCDEX**  
**Expiry: Nov 20<sup>th</sup>, 2012**
**SOYBEAN**
**Technical Commentary:**

- Candlestick chart pattern indicates weakness in the market.
- Prices closed above 9-day and 18-day EMA.
- RSI is easing in the neutral region while the stochastic is heading up in neutral zone.
- MACD is rising in negative territory.

*The soybeans prices are likely to feature losses in Tuesday's session.*


**Strategy: Sell on rise.**

Intraday Supports & Resistances			S1	S2	PCP	R1	R2
Soybean	NCDEX	Nov	3255	3201	3310.5	3366	3421
Intraday Trade Call			Call	Entry	T1	T2	SL
Soybean	NCDEX	Nov	<b>SELL</b>	3299-3301	3290	3285	3305

\* Do not carry-forward the position next day.

Commodity: Rapeseed/Mustard  
Contract: Nov

Exchange: NCDEX  
Expiry: Nov 20<sup>th</sup>, 2012

### RM SEED

#### Technical Commentary:

- Candlestick chart pattern reflects fall in the prices.
- Prices closed above 9-day and 18-day EMA.
- RSI is easing in neutral region while stochastic is easing in overbought zone.
- MACD is heading up in positive territory.

*The RM seed prices are expected to fall in Tuesday's session.*



Strategy: Sell on rise.

Intraday Supports & Resistances			S1	S2	PCP	R1	R2
RM Seed	NCDEX	Nov	4225	4194	4282	4366	4403
Intraday Trade Call			Call	Entry	T1	T2	SL
RM Seed	NCDEX	Nov	<b>SELL</b>	4285-4287	4276	4271	4291

\* Do not carry-forward the position next day.

#### Disclaimer

The information and opinions contained in the document have been compiled from sources believed to be reliable. The company does not warrant its accuracy, completeness and correctness. Use of data and information contained in this report is at your own risk. This document is not, and should not be construed as, an offer to sell or solicitation to buy any commodities. This document may not be reproduced, distributed or published, in whole or in part, by any recipient hereof for any purpose without prior permission from the Company. IASL and its affiliates and/or their officers, directors and employees may have positions in any commodities mentioned in this document (or in any related investment) and may from time to time add to or dispose of any such commodities (or investment). Please see the detailed disclaimer at <http://www.agriwatch.com/Disclaimer.asp>  
© 2005 Indian Agribusiness Systems Pvt Ltd.