

Commodity: Soybean  
Contract: Dec

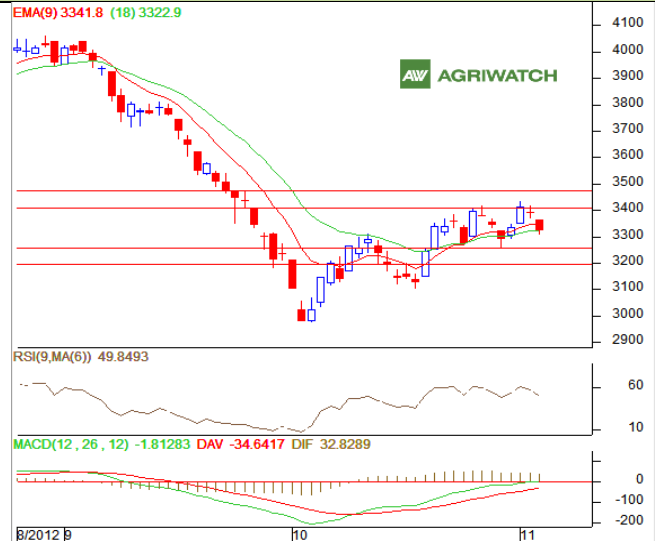
Exchange: NCDEX  
Expiry: Dec 20<sup>th</sup>, 2012

## SOYBEAN

### Technical Commentary:

- Candlestick chart pattern indicates losses in soybean.
- Prices closed below 9-day EMA.
- RSI and stochastic are easing in neutral zone.
- MACD is rising in negative territory.

*The soybeans prices are likely to ease in Monday's session.*



**Strategy: Sell on rise.**

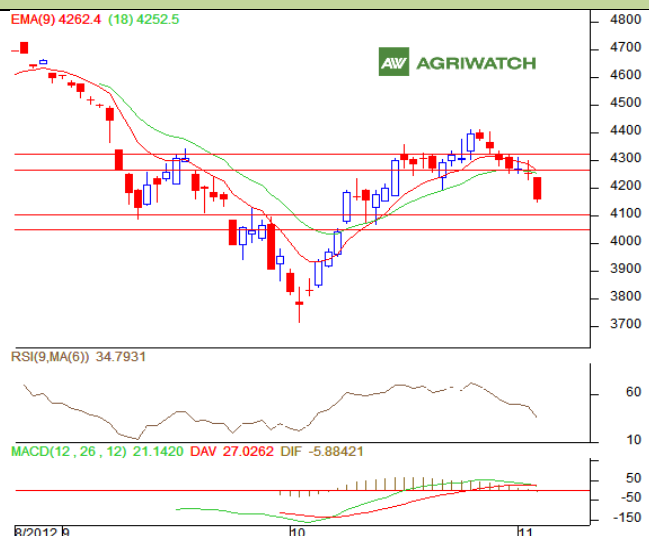
Intraday Supports & Resistances			S1	S2	PCP	R1	R2
Soybean	NCDEX	Dec	3257	3191	3322	3406	3470
Intraday Trade Call			Call	Entry	T1	T2	SL
Soybean	NCDEX	Dec	<b>SELL</b>	3322-3324	3313	3308	3328

\* Do not carry-forward the position next day.

**Commodity: Rapeseed/Mustard**  
**Contract: Dec**
**Exchange: NCDEX**  
**Expiry: Dec 20<sup>th</sup>, 2012**
**RM SEED**
**Technical Commentary:**

- Candlestick chart pattern reflects selling pressure in the market.
- Prices closed below 9-day and 18-day EMA.
- RSI is easing in neutral region while stochastic is falling in oversold zone.
- MACD is easing in negative territory.

*The RM seed prices are expected to fall in Monday's session.*


**Strategy: Sell on rise.**

Intraday Supports & Resistances			S1	S2	PCP	R1	R2
RM Seed	NCDEX	Dec	4109	4050	4158	4269	4321
Intraday Trade Call			Call	Entry	T1	T2	SL
RM Seed	NCDEX	Dec	<b>SELL</b>	4147-4149	4138	4133	4153

\* Do not carry-forward the position next day.

**Disclaimer**

The information and opinions contained in the document have been compiled from sources believed to be reliable. The company does not warrant its accuracy, completeness and correctness. Use of data and information contained in this report is at your own risk. This document is not, and should not be construed as, an offer to sell or solicitation to buy any commodities. This document may not be reproduced, distributed or published, in whole or in part, by any recipient hereof for any purpose without prior permission from the Company. IASL and its affiliates and/or their officers, directors and employees may have positions in any commodities mentioned in this document (or in any related investment) and may from time to time add to or dispose of any such commodities (or investment). Please see the detailed disclaimer at <http://www.agriwatch.com/Disclaimer.asp>  
 © 2005 Indian Agribusiness Systems Pvt Ltd.