

Commodity: Soybean
 Contract: Dec

Exchange: NCDEX
 Expiry: Dec 20th, 2012

SOYBEAN – Technical Outlook

Technical Commentary:

- Candlestick chart pattern indicates weakness in the market.
- Prices closed below 9-day and 18-day EMA, indicating bearish tone in near-term.
- RSI is easing in neutral region. MACD is falling in negative territory. Suggestive of weak tone in the market.

The soybeans prices are likely to fall in Thursday's session.



Strategy: Sell on rise.

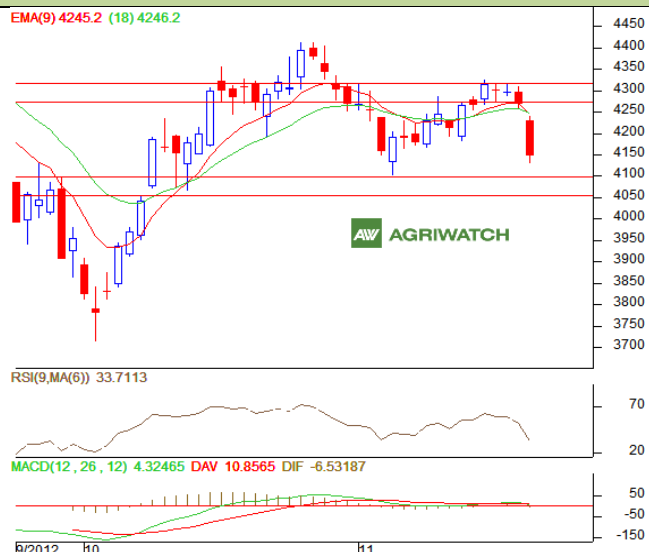
Intraday Supports & Resistances			S1	S2	PCP	R1	R2
Soybean	NCDEX	Dec	3216	3191	3259	3301	3330
Intraday Trade Call			Call	Entry	T1	T2	SL
Soybean	NCDEX	Dec	SELL	3270-3272	3241	3231	3286

* Do not carry-forward the position next day.

Commodity: Rapeseed/Mustard
Contract: Dec
Exchange: NCDEX
Expiry: Dec 20th, 2012
RM SEED – Technical Outlook
Technical Commentary:

- RM seed sharply fell Wednesday.
- Prices closed below 9-day and 18-day EMA, indicating persistence of weakness.
- RSI and stochastic are easing in neutral zone, indicating weak tone.
- MACD is easing in positive territory, indicating weakness.

The RM seed prices are expected to fall in Thursday's session.


Strategy: Sell on rise.

Intraday Supports & Resistances			S1	S2	PCP	R1	R2
RM Seed	NCDEX	Dec	4098	4053	4148	4270	4316
Intraday Trade Call			Call	Entry	T1	T2	SL
RM Seed	NCDEX	Dec	SELL	4160-4162	4131	4121	4176

* Do not carry-forward the position next day.

Disclaimer

The information and opinions contained in the document have been compiled from sources believed to be reliable. The company does not warrant its accuracy, completeness and correctness. Use of data and information contained in this report is at your own risk. This document is not, and should not be construed as, an offer to sell or solicitation to buy any commodities. This document may not be reproduced, distributed or published, in whole or in part, by any recipient hereof for any purpose without prior permission from the Company. IASL and its affiliates and/or their officers, directors and employees may have positions in any commodities mentioned in this document (or in any related investment) and may from time to time add to or dispose of any such commodities (or investment). Please see the detailed disclaimer at <http://www.agriwatch.com/Disclaimer.asp>
 © 2005 Indian Agribusiness Systems Pvt Ltd.