

Commodity: Soybean
Contract: Dec

Exchange: NCDEX
Expiry: Dec 20th, 2012

SOYBEAN – Technical Outlook

Technical Commentary:

- Candlestick chart indicates side-ways movement.
- Prices closed above 9-day EMA, indicating bullish tone in near-term.
- RSI and stochastic are heading upwards in neutral region, indicating the persistence of strength in the market.

The soybeans prices are likely to rise in Friday's session.



Strategy: Buy on dips.

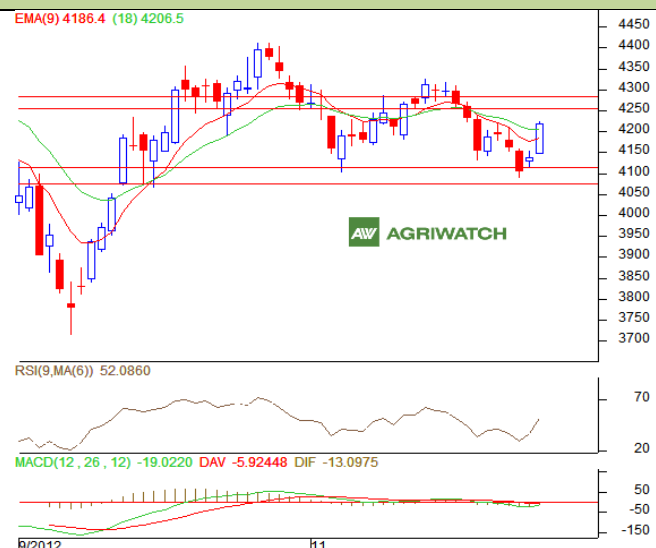
Intraday Supports & Resistances			S1	S2	PCP	R1	R2
Soybean	NCDEX	Dec	3243	3229	3268	3294	3311
Intraday Trade Call			Call	Entry	T1	T2	SL
Soybean	NCDEX	Dec	BUY	3260-3262	3291	3301	3246

* Do not carry-forward the position next day.

Commodity: Rapeseed/Mustard
Contract: Dec
Exchange: NCDEX
Expiry: Dec 20th, 2012
RM SEED – Technical Outlook
Technical Commentary:

- Candlestick chart pattern indicates strong buying interest in the market.
- Prices closed above 9-day and 18-day EMA, indicating persistence of strength.
- RSI is moving up in neutral region, while stochastic is rising in oversold zone, indicating firm tone.

The RM seed prices are expected to rise in Friday's session.


Strategy: Buy on dips.

Intraday Supports & Resistances			S1	S2	PCP	R1	R2
RM Seed	NCDEX	Dec	4112	4072	4218	4255	4285
Intraday Trade Call			Call	Entry	T1	T2	SL
RM Seed	NCDEX	Dec	BUY	4210-4212	4231	4241	4181

* Do not carry-forward the position next day.

Disclaimer

The information and opinions contained in the document have been compiled from sources believed to be reliable. The company does not warrant its accuracy, completeness and correctness. Use of data and information contained in this report is at your own risk. This document is not, and should not be construed as, an offer to sell or solicitation to buy any commodities. This document may not be reproduced, distributed or published, in whole or in part, by any recipient hereof for any purpose without prior permission from the Company. IASL and its affiliates and/or their officers, directors and employees may have positions in any commodities mentioned in this document (or in any related investment) and may from time to time add to or dispose of any such commodities (or investment). Please see the detailed disclaimer at <http://www.agriwatch.com/Disclaimer.asp>

© 2005 Indian Agribusiness Systems Pvt Ltd.