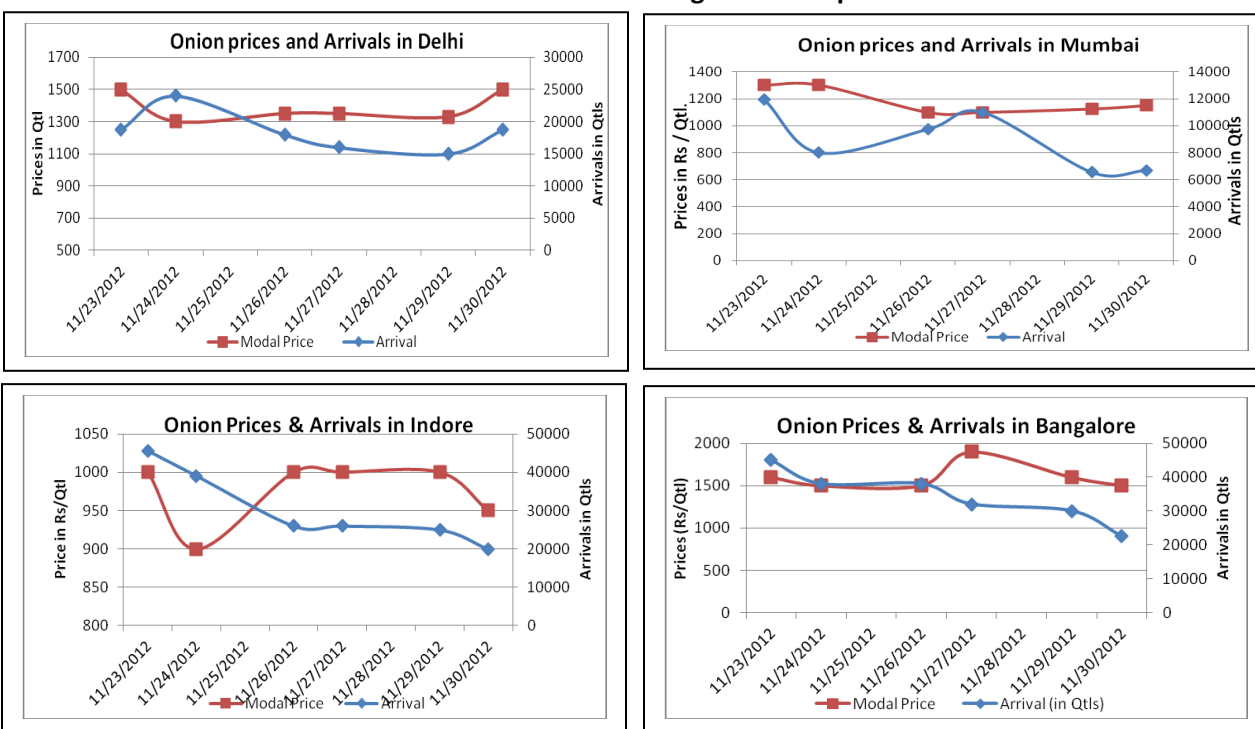


## Onion Fundamentals:

- In Delhi, approximately 60% of fresh onion is arriving in market from Nasik and Kolhapur. Fresh onions are able to fetch a price of Rs 1500/ quintal.
- In Hyderabad, onion is arriving in market from Maharashtra region. Fresh onion is contributing approximately 70% to the total arrival. Prices are hovering in the range of Rs 1000 to Rs 1600/ quintal.
- In Belgaum (Karnataka), arrivals have declined to 10500 from 12500 in last 3-4 days. Arrivals are expected to decline further and prices are likely to increase.
- In Lasalgaon and Pimpalgaon markets arrivals has picked up the pace and expected to increase further. Prices are hovering in the range of Rs 1000 to Rs 1200/ quintal and are expected to remain stable for next few weeks.

## Onion Prices & Arrivals in Producing & Consumption Centers



(Source: AGRIWATCH)

## Onion Prices & Arrivals in Major Mandis as on 30/11/2012

Mandi	Lasalgaon	Pimpalgaon	Pune	Mumbai	Indore	Bangalore	Belgaum
Price (in Qtl)	1050-1100	1350-1450	1300-1500	900-1400	500-1400	1400-1600	-
Arrivals (in Qtl)	12500	20000	7250	6700	20000	22500	-

## Onion Prices & Arrivals in Major Mandis as on 29/11/2012

Mandi	Lasalgaon	Pimpalgaon	Pune	Mumbai	Indore	Bangalore	Belgaum
Price (in Qtl)	1000-1300	1000-1350	1200-1600	900-1350	500-1500	1400-1800	600-1600
Arrivals (in Qtl)	8000	11000	5500	6550	25000	30000	10500

(Source: AGRIWATCH)

Onion Prices in major markets – Mandi vs. Retail as on 30<sup>th</sup> November 2012

Centre Name	Min. Price (Rs/Qtl)	Max. Price (Rs/Qtl)	Modal Price (Rs/Qtl)	Arrival (MT.)	Retail Price (Rs/Qtl)
ABOHAR	840	1060	950	88	2000
AGRA	1000	1160	1080	135	1800
AHMEDABAD	500	1100	800	237	1700
AMRITSAR	1200	1600	1400	125	2000
BHOPAL	750	850	800	72	900
BHUBANESHWAR	1600	1800	1700	200	2000
CHANDIGARH	1000	1200	1100	80	2000
CHENNAI	1800	2200	2000	450	2400
DEHRADUN	1530	1650	1600	32	2500
GANGATOK	1600	1800	1700	4	2600
GUWAHATI	1950	2100	2050	80	2600
JAMMU	1600	1700	1650	1350	2200
KOLKATA	1625	2000	1813	208	2600
LUCKNOW	900	1000	950	24	1400
MUMBAI	900	1400	1150	670	2000
PUNE	1300	1500	1400	725	1700
RAIPUR	1300	1600	1400	30	2000
RANCHI	1250	1650	1580	170	2000
SHIMLA	1700	1900	1800	15	2500
SURAT	1000	1100	1050	250	1600
TRIVANDRUM	2000	2250	2150	30	2700

(Source: NHB)

## Disclaimer

The information contained in this document has been compiled by Agriwatch from sources believed to be reliable, such as NHB, Agmarknet, etc. and directly from traders in mandis. However, users of this data are requested to use the information with due caution and crosscheck with other sources. This document is not, and should not be construed as an offer to sell or buy any commodities. This document may not be reproduced, distributed or published without the express consent of SFAC