

Potato Fundamentals:

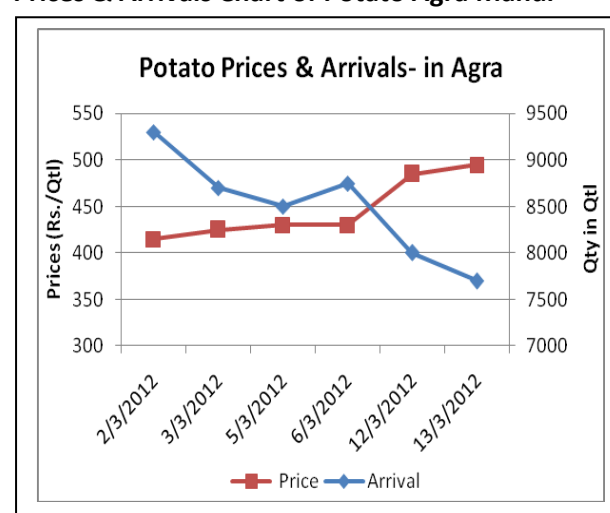
- Prices have increased by 40-50/Qtl across all the major mandis of UP due to good buying interest by stockiest and demand from other states.
- Stockiest and cold store owners are buying potatoes from farmers from their field itself. It has resulted in lower supply in APMC mandi.
- As depicted in below chart, arrivals are dwindling and prices are rising in Agra Mandi.
- As per cold store owner information, in West Bengal also this time 75-80% of storage capacities will be utilized.
- Highest retails price of Rs. 2200/Qtl was recorded in Trivandrum due to very low arrivals in the market.

Price & Arrivals as on 13/03/2012 in UP

Mandi	Price (in Qtl)	Arrivals (in Qtl)
Agra	600	6000
Khandauli	750	NA
Aligarh	700	1000
Khair	600	2750
Shikohabad	650	2500
Sirsaganj	700	4500
Farrukhabad	700	4000

(Source: Agriwatch)

Prices & Arrivals Chart of Potato Agra Mandi



(Source: NHRDF, AGMARKNET)

Outlook:

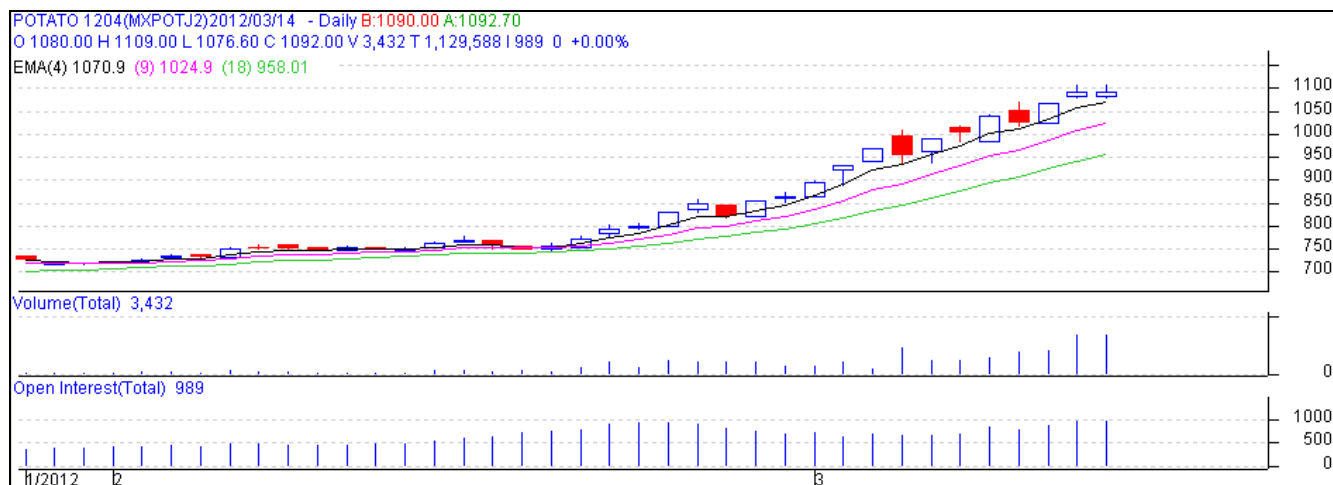
Prices will continue be in uptrend due to short supply in mandis and stocking interest.

Potato Futures Prices at MCX as on 13th March 2012

Symbol	Delivery Center	Expiry Date	Today's Close (Rs/Qtl)	Prev Close (Rs/Qtl)	Net Change	Today's Open Interest (in MT)	Change in Open Interest	Prev. day's Open Interest (in MT)
POTATO	Agra	15-Mar-12	902.9	901.9	1	7170	-4770	11940
POTATO	Agra	14-Apr-12	1092	1066.6	25.4	29670	2790	26880
POTATO	Agra	15-May-12	1214	1170.4	43.6	39570	-8190	47760
POTATOTRW R	Tarkeshwar , W Bengal	15-Mar-12	802.6	771.7	30.9	2040	-2430	4470
POTATOTRW R	Tarkeshwar , W Bengal	13-Apr-12	878	847	31	4950	-540	5490
POTATOTRW R	Tarkeshwar , W Bengal	15-May-12	986	948.1	37.9	24720	-1320	26040

Prices have increased of both Agra and Tarkeshwar contracts. Short covering is seen in almost all contracts which is evident from falling open interest and rising prices.

Technical Analysis - Potato-April Contract at MCX



Uptrend is continuing in Potato Future contracts at MCX. However prices are getting resistance near 1110 levels in April contracts. Profit booking could be seen at these levels. Closing above 1115 levels could take prices further up and short sellers would rush to cover their positions.

Potato Prices – Mandi vs. Retail as on 13th March 2012

S.No.	Centre Name	Variety	Mandi MinPrice (Rs/Qtl)	Mandi MaxPrice (Rs/Qtl)	Mandi Avg.Price (Rs/Qtl)	Arrival (MT.)	RetailPrice (Rs/Qtl)
1	AGRA	POTATO FRESH	550	685	620	160	900
2	AHMEDABAD	POTATO FRESH	450	650	550	542	800
3	BANGALORE	POTATO FRESH	700	800	750	414	1200
4	BARAUT	POTATO STORE	700	800	750	20	1100
5	BHOPAL	POTATO FRESH	500	600	550	28	800
6	BHUBANESHWAR	POTATO FRESH	660	700	680	350	950
7	CHENNAI	POTATO FRESH	800	1100	950	250	1600
8	DELHI	POTATO FRESH	460	700	580	1678	900
9	GUWAHATI	POTATO FRESH	600	700	650	240	900
10	JAIPUR	POTATO FRESH	500	600	555	330	900

11	JAMMU	POTATO FRESH	500	600	550	108	800
12	KOLKATA	POTATO FRESH	620	640	630	368	850
13	LUCKNOW	POTATO FRESH	550	650	600	40	800
14	MUMBAI	POTATO FRESH	700	950	825	1168	1200
15	MUMBAI	POTATO STORE	750	1050	900	0	1400
16	NAGPUR	POTATO FRESH	500	700	600	310	1000
17	PUNE	POTATO FRESH	800	1000	900	690	1200
18	RANCHI	POTATO FRESH	390	465	418	200	800
19	SHIMLA	POTATO FRESH	650	750	700	40	1000
20	SRINAGAR	POTATO FRESH	700	740	710	80	1000
21	SRINAGAR	POTATO STORE	800	870	840	100	1200
22	SURAT	POTATO FRESH	600	700	650	220	1200
23	TRIVENDRUM	POTATO FRESH	1500	1600	1550	22	2200

(Source:NHB)

Disclaimer

The information and opinions contained in the document have been compiled from sources believed to be reliable. The company does not warrant its accuracy, completeness and correctness. Use of data and information contained in this report is at your own risk. This document is not, and should not be construed as, an offer to sell or solicitation to buy any commodities. This document may not be reproduced, distributed or published, in whole or in part, by any recipient hereof for any purpose without prior permission from the Company. IASL and its affiliates and/or their officers, directors and employees may have positions in any commodities mentioned in this document (or in any related investment) and may from time to time add to or dispose of any such commodities (or investment). Please see the detailed disclaimer at <http://www.agriwatch.com/Disclaimer.php>

© 2005 Indian Agribusiness Systems Pvt Ltd.