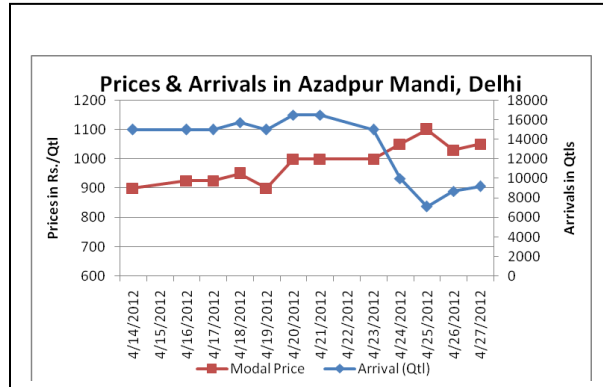
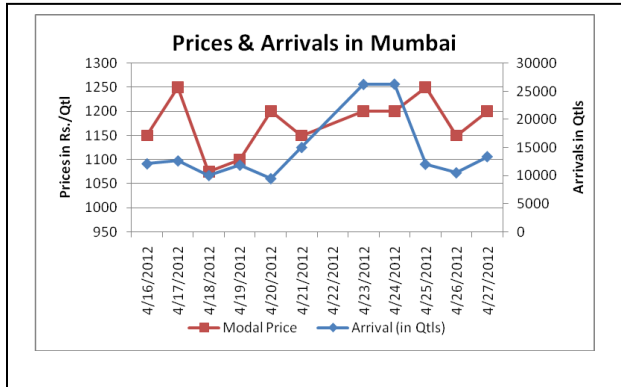
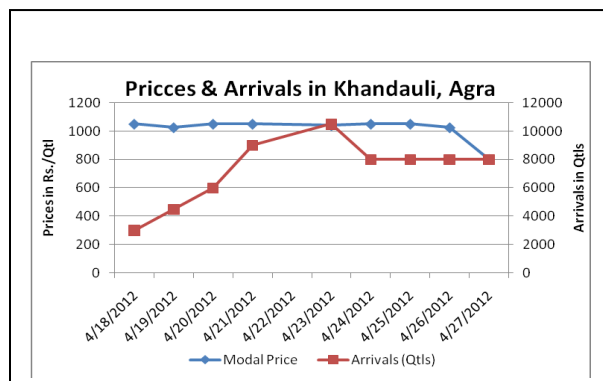
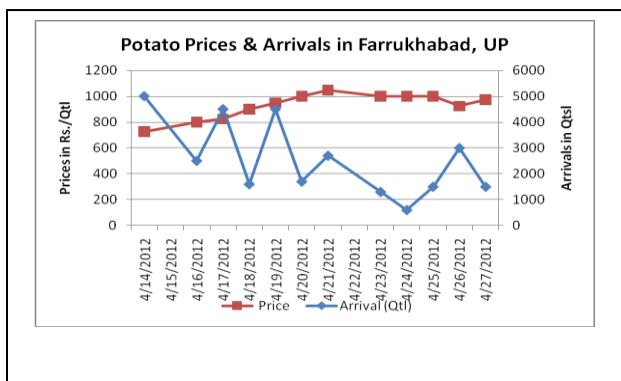


## Potato Fundamentals:

- Traders expect potato price to rise further in future due to stable demand and restricted supply.
- Potato sowing could be delayed in Ooty region of Karnataka due to insufficient rain which will create further demand supply mismatch.
- Potato prices in producing regions have become stable near 1000-1100 from last one week and probably getting regular supply from cold stores.
- Potato in Begusarai region of Bihar trading in the range of 1050-1100/Qtl. Cold Stores in this region is expected to open from 1<sup>st</sup> May and traders are expecting opening prices of cold to be near 1000/Qtl.
- Daily 80-90 trucks are loading from Khandauli cold stores for different locations like Hubli, Mumbai, Belgaum and Bihar. Supply from cold store is expected to increase further in near future as prices rise.
- Meanwhile the retail prices are hovering between 900-2400/Qtl with highest being recorded at Trivendrum Rs. 2400/Qtl followed by Chennai and Coimbatore at Rs.2200/Qtl



(Source: Agriwatch)

## Potato Prices & Arrivals in UP Mandis as on 30/04/2012

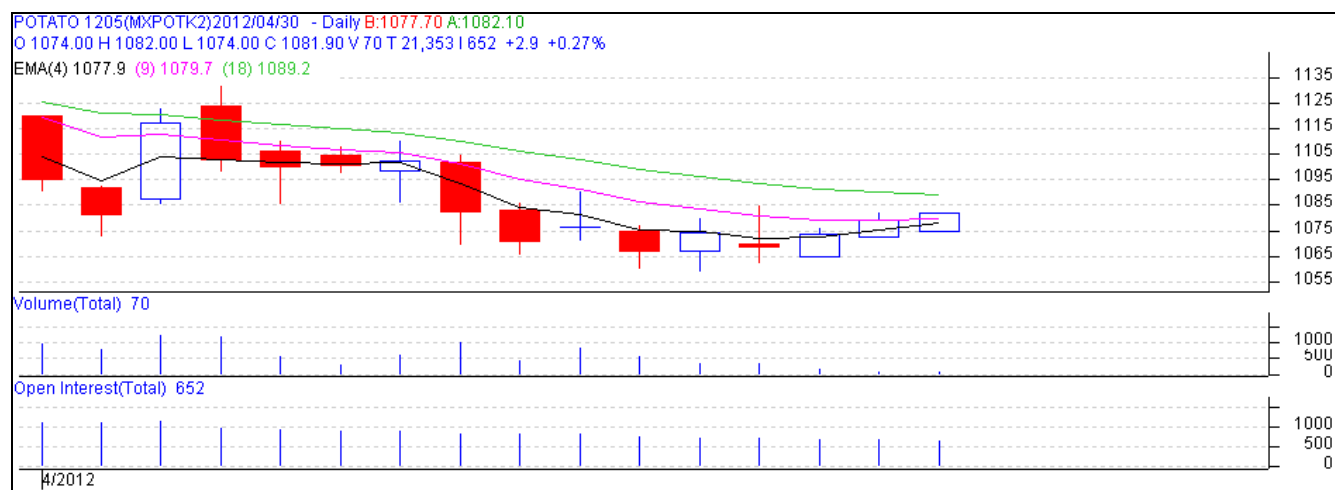
| Mandi             | Agra      | Khandauli | Aligarh | Khair | Shikohabad | Sirsaganj | Farrukhabad |
|-------------------|-----------|-----------|---------|-------|------------|-----------|-------------|
| Price (in Qtl)    | 1000-1100 | 800-1000  | 850-900 | 1000  | 900-1000   | 1000-1150 | 900-1100    |
| Arrivals (in Qtl) | 400       | 9000      | 500     | -     | 300        | -         | 1000        |

## Potato Prices & Arrivals in UP Mandis as on 28/04/2012

| Mandi             | Agra     | Khandauli | Aligarh | Khair | Shikohabad | Sirsaganj | Farrukhabad |
|-------------------|----------|-----------|---------|-------|------------|-----------|-------------|
| Price (in Qtl)    | 900-1000 | 1000-1100 | 850     | 1000  | 1000-1060  | 1000-1160 | 900-1100    |
| Arrivals (in Qtl) | 550      | 9000      | 500     | -     | 250        | -         | 1100        |

(Source: Agriwatch)

## Technical Analysis- MCX Potato May Contract as on 30<sup>th</sup> April, 2012



(Source: Agriwatch Research)

Prices managed to close above 4-day and 9-day exponential moving averages sending some bullish signal in short term. Next resistance could be found near 1090 which is 18-day exponential moving average. A closing above 1100 could take further prices up to 1125 levels in near term. There is crucial support of Rs. 1065 at lower levels which is not breached on closing basis and prices bounces from these levels earlier also.

## Potato Futures Market Analysis- MCX & NCDEX as on 30<sup>th</sup> April 2012

| Symbol     | Exchange | Delivery Center | Expiry Date | Today's Close Price | Prev Close Price | Net Change | Today's Open Interest | Previous Day Open Interest | Change |
|------------|----------|-----------------|-------------|---------------------|------------------|------------|-----------------------|----------------------------|--------|
| POTATO     | MCX      | Agra            | 15-May-12   | 1081.9              | 1079             | 2.9        | 19560                 | 20460                      | -900   |
| POTATO     | MCX      | Agra            | 15-Jun-12   | 1133.8              | 1130.2           | 3.6        | 22920                 | 24240                      | -1320  |
| POTATO     | MCX      | Agra            | 14-Jul-12   | 1181                | 1185.8           | -4.8       | 7890                  | 7740                       | 150    |
| POTATOTRWR | MCX      | Tarkeshwar      | 15-May-12   | 904                 | 904.9            | -0.9       | 9660                  | 9240                       | 420    |
| POTATOTRWR | MCX      | Tarkeshwar      | 15-Jun-12   | 947.8               | 955.8            | -8         | 12930                 | 13050                      | -120   |
| POTATOTRWR | MCX      | Tarkeshwar      | 14-Jul-12   | 983.7               | 990              | -6.3       | 1800                  | 1860                       | -60    |
| Total      |          |                 |             |                     |                  |            | 74760                 | 76590                      | -1830  |

| Symbol | Exchange | Delivery Center | Expiry Date | Today's Close Price | Prev Close Price | Net Change | Today's Open Interest | Previous Day Open Interest | Change |
|--------|----------|-----------------|-------------|---------------------|------------------|------------|-----------------------|----------------------------|--------|
| POTATO | NCDEX    | Agra            | 18-May-12   | 987.1               | 991.4            | -4.3       | 7110                  | 7260                       | -150   |
| POTATO | NCDEX    | Agra            | 20-Jun-12   | 1029                | 1038.9           | -9.9       | 4740                  | 4845                       | -105   |
| POTATO | NCDEX    | Agra            | 20-Jul-12   | 1099                | 1109             | -10        | 1710                  | 1695                       | 15     |
| Total  |          |                 |             |                     |                  |            | 13560                 | 13800                      | -240   |

## Potato Prices of Fresh Variety – Mandi vs. Retail as on 28 April 2012

| S. No. | Centre Name | Mandi Min Price (Rs/Qtl) | Mandi Max Price (Rs/Qtl) | Mandi Avg. Price (Rs/Qtl) | Arrival (MT.) | Retail Price (Rs/Qtl) |
|--------|-------------|--------------------------|--------------------------|---------------------------|---------------|-----------------------|
| 1      | AGRA        | 930                      | 995                      | 965                       | 110           | 1400                  |
| 2      | AMRITSAR    | 740                      | 850                      | 800                       | 28            | 1200                  |
| 3      | BANGALORE   | 1200                     | 1400                     | 1300                      | 288           | 1800                  |
| 4      | BARAUT      | 900                      | 1000                     | 950                       | 19            | 1200                  |
| 5      | BHOPAL      | 600                      | 700                      | 650                       | 125           | 900                   |
| 6      | CHANDIGARH  | 950                      | 1075                     | 1013                      | 50            | 1500                  |
| 7      | CHENNAI     | 1200                     | 1400                     | 1300                      | 220           | 2200                  |
| 8      | GANGATOK    | 750                      | 1350                     | 1050                      | 2.5           | 2000                  |
| 9      | JAIPUR      | 850                      | 950                      | 905                       | 278           | 1500                  |
| 10     | JAMMU       | 1000                     | 1200                     | 1100                      | 63            | 1500                  |
| 11     | KOLKATA     | 980                      | 1000                     | 990                       | 378           | 1200                  |
| 12     | LUCKNOW     | 925                      | 1075                     | 1000                      | 52            | 1300                  |
| 13     | MUMBAI      | 1000                     | 1300                     | 1200                      | 1024          | 1200                  |
| 15     | NAGPUR      | 1000                     | 1250                     | 1125                      | 250           | 1500                  |
| 16     | NASIK       | 1150                     | 1250                     | 1210                      | 120           | 1450                  |
| 17     | PATNA       | 900                      | 1000                     | 950                       | 60            | 1350                  |
| 18     | RAIPUR      | 1000                     | 1150                     | 1100                      | 28            | 1600                  |
| 19     | RAIPUR      | 1000                     | 1150                     | 1100                      | 0             | 1600                  |
| 20     | RANCHI      | 690                      | 880                      | 850                       | 210           | 1200                  |
| 21     | SHIMLA      | 1500                     | 1600                     | 1550                      | 20            | 2000                  |
| 22     | SRINAGAR    | 1000                     | 1150                     | 1080                      | 130           | 1500                  |
| 23     | TRIVENDRUM  | 1850                     | 2050                     | 1950                      | 17            | 2400                  |

(Source: NHB)

### Disclaimer

The information contained in this document has been compiled by Agriwatch from sources believed to be reliable, such as NHB, Agmarknet, etc. and directly from traders in mandis. However, users of this data are requested to use the information with due caution and crosscheck with other sources. This document is not, and should not be construed as an offer to sell or buy any commodities. This document may not be reproduced, distributed or published without the express consent of SFAC



**SFAC**  
लघु कृषक  
कृषि व्यापार संघ

Small Farmers'  
Agribusiness  
Consortium



**AGRIWATCH**