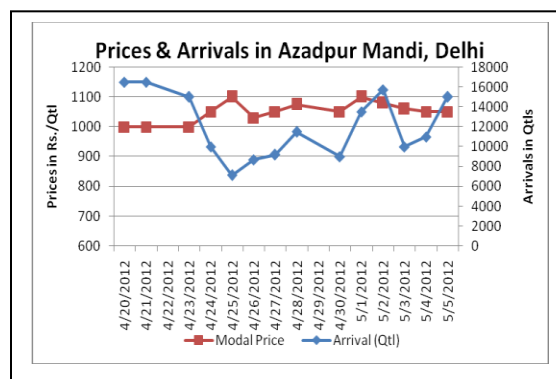
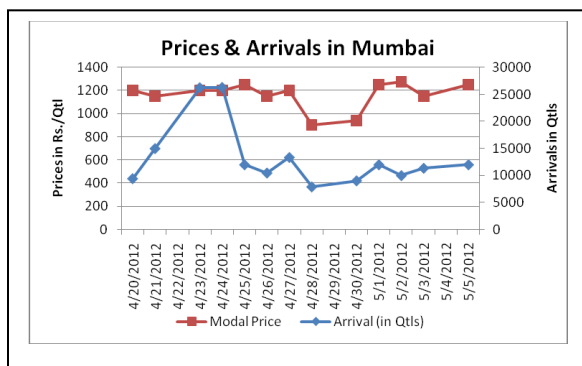
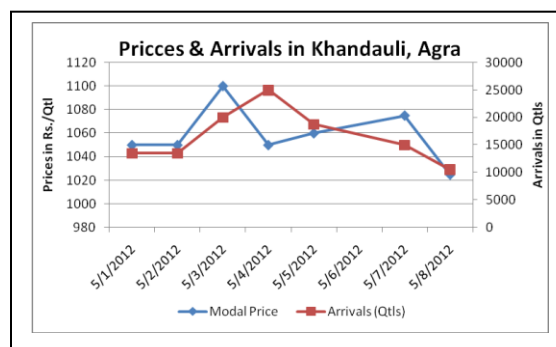
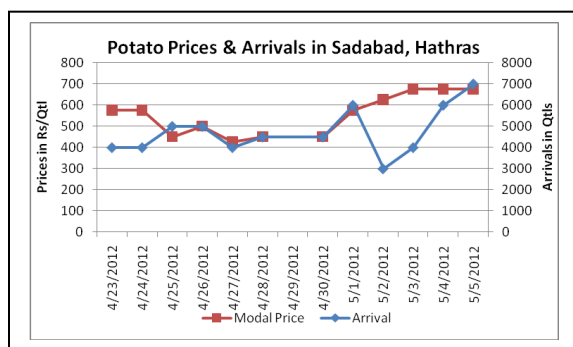


## Potato Fundamentals:

- Release of Potato from Khandauli region of Agra has decreased yesterday. Average potato release was 10500 Qtls as compared to 20000 Qtl on 7<sup>th</sup> May.
- Cold stores in Begusarai and Purunea region have opened with price quote of Rs. 1000-1050/Qtl. However sale from these areas are low as farmers are waiting for further price increase before they start releasing their produce in the market.
- Traders are optimistic about potato prices and expect further increase in near future due to stable demand and lower supply from West Bengal and Bihar cold stores.
- Highest retail prices of Rs. 2900/Qtl were reported in Trivandrum followed by Rs. 2400/Qtl in Chennai and Bangalore.

## Potato Prices and Arrivals in Producing and Consumption Centers



(Source: Agriwatch)

## Potato Prices & Arrivals in UP Mandis as on 08/05/2012

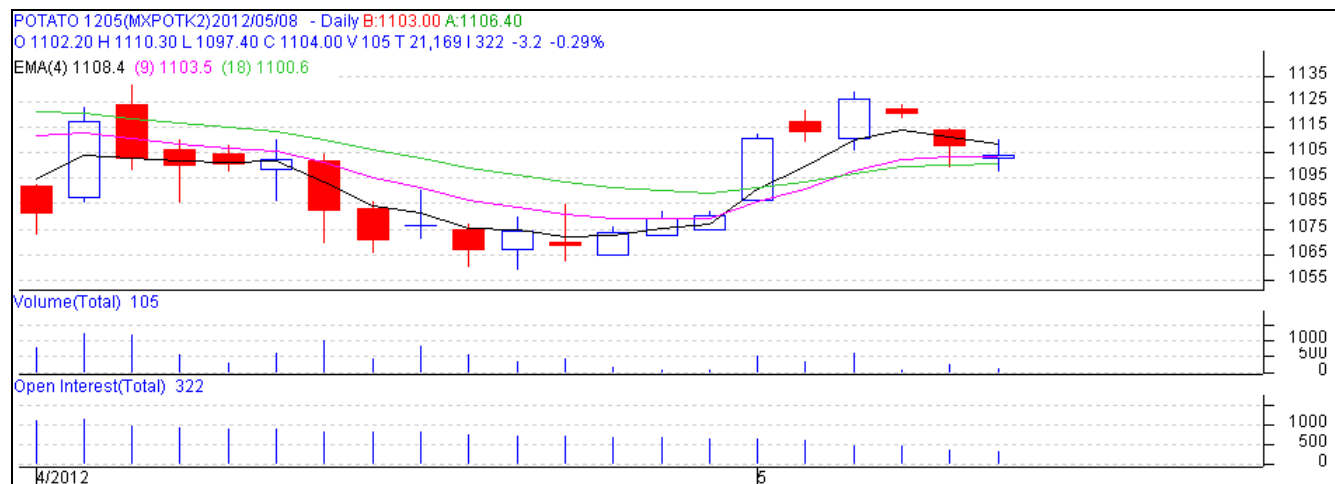
Mandi	Agra	Khandauli	Aligarh	Khair	Shikohabad	Sirsaganj	Farrukhabad
Price (in Qtl)	900-1000	1000-1050	900-1000	1000	1000-1100	1100	900-1100
Arrivals (in Qtl)	600	10500	350	No Arrival	250	No Arrival	700

## Potato Prices & Arrivals in UP Mandis as on 07/05/2012

Mandi	Agra	Khandauli	Aligarh	Khair	Shikohabad	Sirsaganj	Farrukhabad
Price (in Qtl)	900-1000	1000-1150	1000	1000	1000-1050	1100	960-1020
Arrivals (in Qtl)	500	15000	700	No Arrival	400	-	700

(Source: Agriwatch)

## Technical Analysis- MCX Potato May Contract as on 8<sup>th</sup> May, 2012



(Source: Agriwatch Research)

May contract of Potato-Agra at MCX have managed to close above 18-day exponential moving averages after getting support at 1100 levels in last two days Market is still in uptrend but closing below 1100 for two session could drag prices further down up to 1060 in short term.

## Potato Futures Market Analysis- MCX & NCDEX as on 8th May 2012

Symbol	Exchange	Delivery Center	Expiry Date	Today's Close Price	Prev Close Price	Net Change	Today's Open Interest	Previous Day Open Interest	Change
POTATO	MCX	Agra	15-May-12	1104	1107.2	-3.2	9660	10320	-660
POTATO	MCX	Agra	15-Jun-12	1165	1168.6	-3.6	21270	21300	-30
POTATO	MCX	Agra	14-Jul-12	1235.8	1249.5	-13.7	9210	9120	90
POTATOTRWR	MCX	Tarkeshwar	15-May-12	928.2	931.6	-3.4	6300	6330	-30
POTATOTRWR	MCX	Tarkeshwar	15-Jun-12	982	982	0	10800	11460	-660
POTATOTRWR	MCX	Tarkeshwar	14-Jul-12	1034.9	1033.5	1.4	4020	4050	-30
Total							61260	62580	-1320

Symbol	Exchange	Delivery Center	Expiry Date	Today's Close Price	Prev Close Price	Net Change	Today's Open Interest	Previous Day Open Interest	Change
POTATO	NCDEX	Agra	18-May-12	1032	1034.6	-2.6	6315	6210	105
POTATO	NCDEX	Agra	20-Jun-12	1081.8	1080.4	1.4	4140	4065	75
POTATO	NCDEX	Agra	20-Jul-12	1166.3	1168.2	-1.9	1950	1815	135
Total							12405	12090	315

## Potato Prices of Fresh Variety – Mandi vs. Retail as on 7th May 2012:

S. No.	Centre Name	Mandi Min Price (Rs/Qtl)	Mandi Max Price (Rs/Qtl)	Mandi Avg. Price (Rs/Qtl)	Arrival (MT.)	Retail Price (Rs/Qtl)
1	ABOHAR	860	1070	965	108	1200
2	AGRA	900	1100	1000	80	1600
3	AHMEDABAD	700	1200	950	182	1300
4	BANGALORE	1600	1800	1700	378	2400
5	BARAUT	800	900	850	19	1300
6	BHOPAL	1000	1200	1100	80	1400
7	CHANDIGARH	900	1000	950	60	1600
8	CHENNAI	1600	1800	1700	220	2400
9	DEHRADUN	650	750	700	27	1000
10	DELHI	900	1200	1050	42	1400
11	DELHI	1050	1150	1100	0	1200
12	GANGATOK	1200	1600	1400	4	1600
13	GUWAHATI	1100	1200	1150	230	1400
14	HYDERABAD	800	1200	1000	190	1500
15	JAIPUR	800	900	855	290	1500
16	JAMMU	800	1000	900	90	1200
17	KOLKATA	1080	1100	1090	288	1350
18	LUCKNOW	1000	1100	1050	52	1500
19	MUMBAI	1000	1300	1200	1640	1400
20	MUMBAI	1150	1400	1275	0	1800
21	NAGPUR	500	1200	850	200	1500
22	NASIK	1100	1300	1210	80	1500
23	PATNA	1050	1100	1075	10	1500
24	RAIPUR	1000	1150	1100	29	1600
25	RANCHI	850	1100	1075	210	1400
26	SHIMLA	1600	1800	1700	22	2000
27	SRINAGAR	1100	1200	1150	160	1500
28	TRIVENDRUM	2000	2400	2200	18	2900

(Source; NHB)



**SFAC**  
लघु कृषक  
कृषि व्यापार संघ

Small Farmers'  
Agribusiness  
Consortium



**AGRIWATCH**

### Disclaimer

The information contained in this document has been compiled by Agriwatch from sources believed to be reliable, such as NHB, Agmarknet, etc. and directly from traders in mandis. However, users of this data are requested to use the information with due caution and crosscheck with other sources. This document is not, and should not be construed as an offer to sell or buy any commodities. This document may not be reproduced, distributed or published without the express consent of SFAC



**SFAC**  
लघु कृषक  
कृषि व्यापार संघ

Small Farmers'  
Agribusiness  
Consortium



**AGRIWATCH**