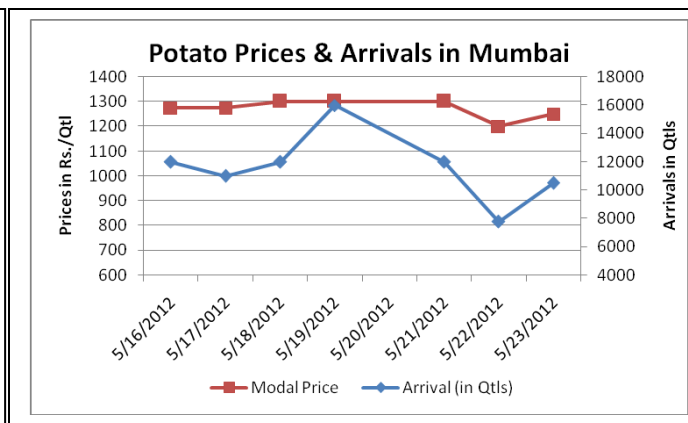
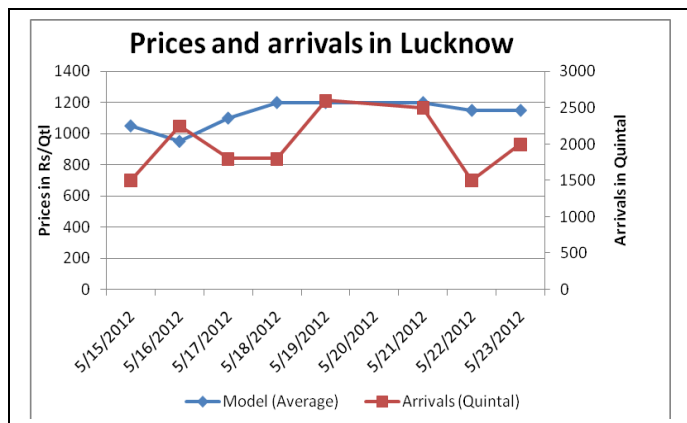
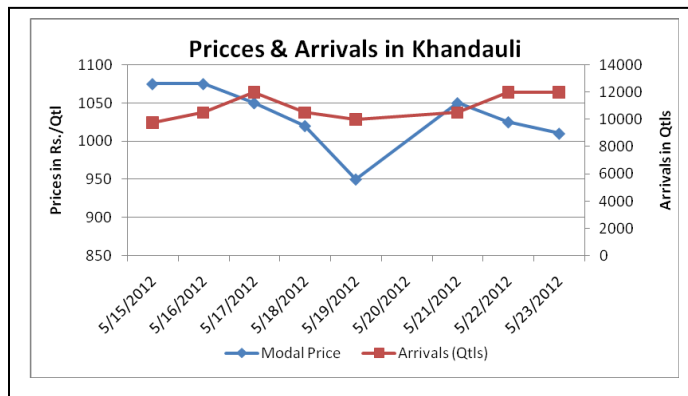
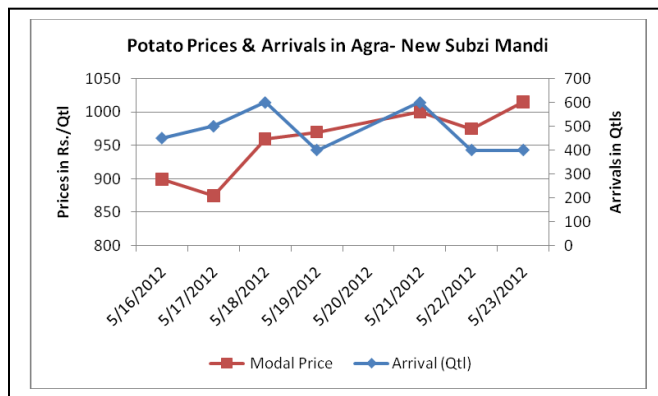


Potato Fundamentals:

- In Agra region, the pace of potato release from cold stores have started after potato prices have increased to Rs. 1100/Qtl.
- As per cold store owners, farmers are comfortable in releasing their stored potato in the range of 1150-1200/Qtl. The pace of release will increase from June onwards.
- As per trade sources, 12-15% of potato from Cold stores in Agra region have been released till date and it is expected by this month end approx 20% of stored potato will be released.
- In Khandauli the major demand comes from Bombay, Pune, Hyderabad, Karnataka and Andhra Pradesh.



(Source: Agriwatch)

Potato Prices & Arrivals in UP Mandis as on 23/5/2012

Mandi	Agra	Khandauli	Aligarh	Sadabad	Shikohabad	Kanpur	Farrukhabad
Price (in Qtl)	1000-1030	1000-1020	900	650-700	960-1080	950-1050	900-1000
Arrivals (in Qtl)	400	12000	500	6000	200	7500	NA

Potato Prices & Arrivals in UP Mandis as on 22/5/2012

Mandi	Agra	Khandauli	Aligarh	Sadabad	Shikohabad	Kanpur	Farrukhabad
Price (in Qtl)	850-1100	1000-1050	900	650-700	800-900	1000-1150	900-1000
Arrivals (in Qtl)	400	12000	400	5000	2400	11000	NA

(Source: Agriwatch)

Outlook:

Potato prices are likely to be range bound for some time with downward bias for short term.

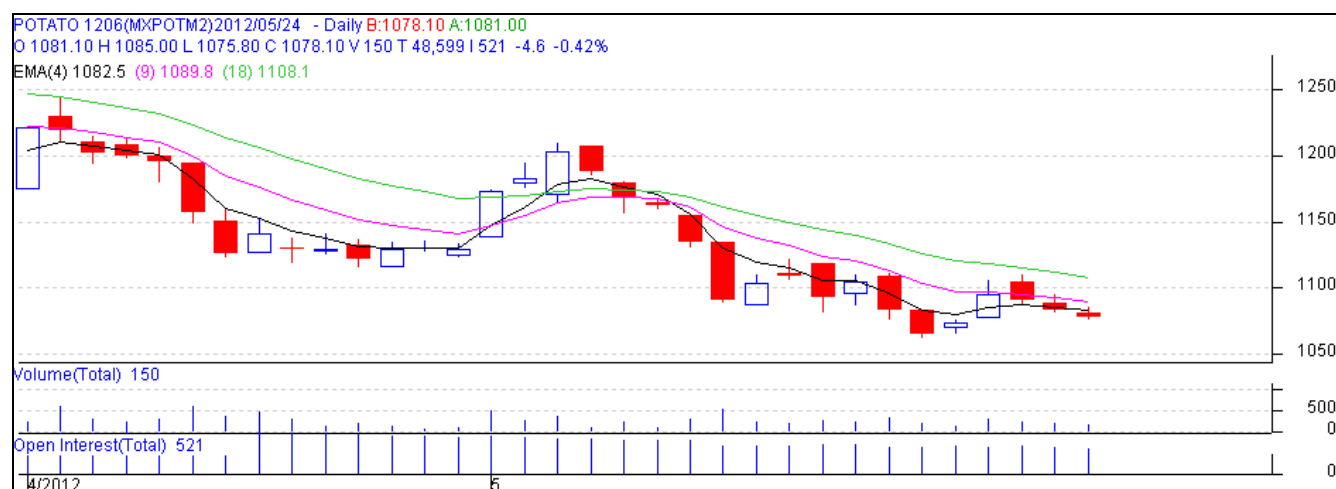
Potato Futures Prices at MCX as on 23 May 2012

Symbol	Exchange	Delivery Center	Expiry Date	Today's Close Price	Prev. Close Price	Net Change	Today's Open Interest	Previous Day Open Interest	Change
POTATO	MCX	Agra	15-Jun-12	1078.10	1082.70	-4.6	15630	16590.00	-960.00
POTATO	MCX	Agra	14-Jul-12	1135.00	1151.70	-16.7	12630	12810.00	-180.00
POTATOTRWR	MCX	Tarkeshwar	15-Jun-12	925	933.70	-8.7	8100	8280.00	-180.00
POTATOTRWR	MCX	Tarkeshwar	14-Jul-12	974	984.80	-10.8	5310	5400.00	-90.00
					Total		43080	43080.00	1410.00

Potato Futures Prices at NCDEX as on 23 May 2012

Symbol	Exchange	Delivery Center	Expiry Date	Today's Close Price	Prev Close Price	Net Change	Today's Open Interest	Previous Day Open Interest	Change
POTATO	NCDEX	Agra	20-Jun-12	1008.00	1015.70	-7.5	4635	4545	90
POTATO	NCDEX	Agra	20-Jul-12	1068.40B	1086.50A	-20.1	2625	2670	-45
					Total		7260	7215	45

Technical Analysis - Potato- June Contract at MCX



Potato Prices of Fresh Variety – Mandi vs. Retail as on 22 May 2012

S. No.	Centre Name	Mandi Min Price (Rs/Qtl)	Mandi Max Price (Rs/Qtl)	Mandi Avg. Price (Rs/Qtl)	Arrival (MT.)	Retail Price (Rs/Qtl)
1	ABOHAR	870	1060	965	115	1500
2	AGRA	930	1060	995	70	1500
3	AHMEDABAD	800	1100	950	210	1300
4	AMRITSAR	900	1100	1000	35	1500
5	BANGALORE	1400	1500	1450	450	2000
6	BARAUT	1200	1300	1250	18	1600
7	BHOPAL	800	1000	900	125	1200
8	CHANDIGARH	800	1000	900	70	1500
9	CHENNAI	1300	1500	1400	230	2000
10	DEHRADUN	900	1000	950	98	1500
11	DELHI	950	1200	1075	1587	1400
12	DELHI	880	1100	990	0	1300
13	GANGATOK	1400	1600	1500	4	1700
14	GUWAHATI	1300	1380	1340	230	1600
15	JAIPUR	800	900	860	290	1400
16	JAMMU	1200	1300	1250	54	1500
17	KOLKATA	1060	1080	1070	423	1300
18	LUCKNOW	1000	1250	1125	20	1600
19	MUMBAI	1150	1350	1200	776	1500
20	MUMBAI	1200	1500	1400	0	1800
21	NAGPUR	1125	1300	1213	180	1800
22	PATNA	1050	1125	1087	80	1400
23	PUNE	1200	1400	1300	565	1600
24	RAIPUR	1100	1200	1150	26	1500
25	RANCHI	1060	1100	1075	215	1400
26	SHIMLA	1600	1700	1650	18	2000
27	SRINAGAR	1100	1300	1200	50	1800
28	SURAT	1000	1200	1100	240	1600
29	TRIVENDRUM	2000	2400	2200	18	2800

(Source: NHB)

Disclaimer

The information contained in this document has been compiled by Agriwatch from sources believed to be reliable, such as NHB, Agmarknet, etc. and directly from traders in mandis. However, users of this data are requested to use the information with due caution and crosscheck with other sources. This document is not, and should not be construed as an offer to sell or buy any commodities. This document may not be reproduced, distributed or published without the express consent of SFAC