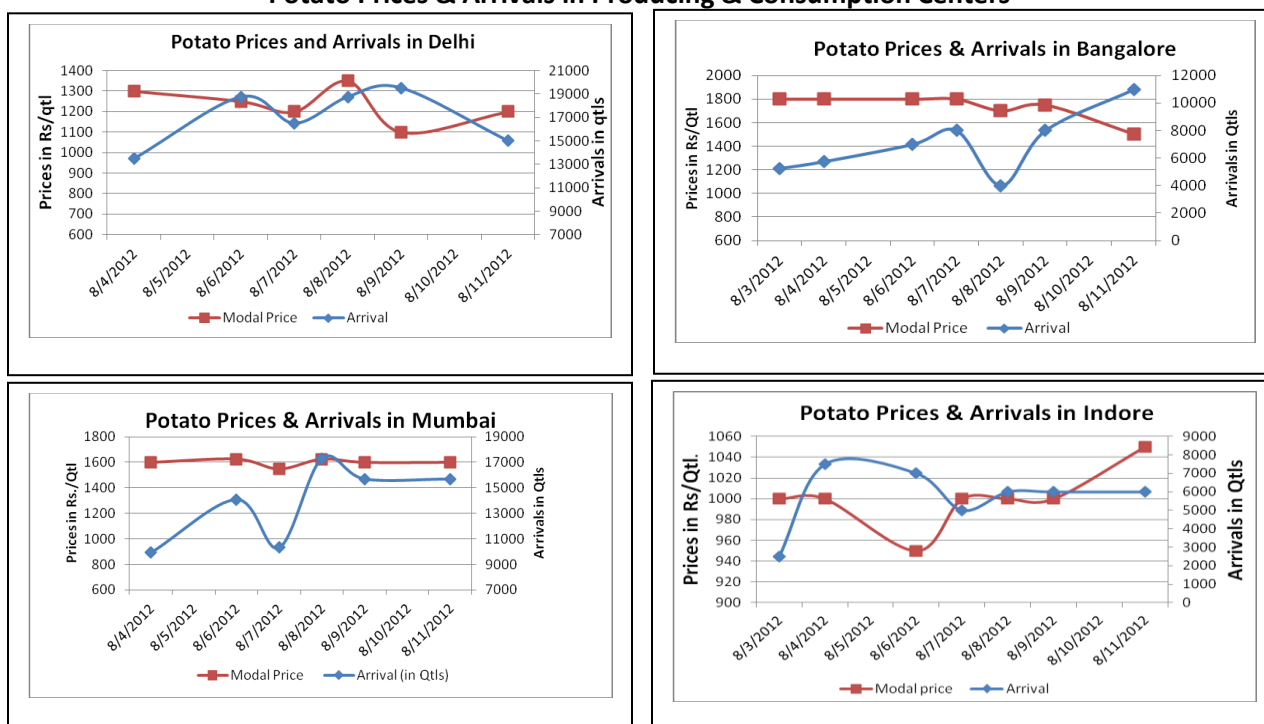


## Potato Fundamentals:

- Potato futures in MCX and NCDEX are trading below its spot market prices after heavy sell off and lack of buying interest from traders due to higher margins and fear of FMC regulations against potato futures.
- Potato futures on MCX closed 1-2 % down from previous closing. However some buying emerges at lower levels as visible from technical chart of Sep-Agra contract. But still prices are in bearish phase as they are trading below its short term exponential moving averages.
- Retail prices of potato have gone up in recent days though wholesale prices in different producing centers remain in the range of 1100-1300/Qtl. This is because during rainy season spoilage is as high as 15-20% during transportation so traders and retailers in the consuming centers have to increase their price to cover up the loss of transit.

## Potato Prices & Arrivals in Producing & Consumption Centers



(Source: AGRIWATCH)

## Potato Prices & Arrivals in major Mandi as on 11/8/2012

Mandi	Khandauli	Farrukhabad	Sirsa Ganj	Kanpur	Jalandhar	Indore	Bangalore
Price (in Qtl)	1250-1350	1150-1300	1400-1440	1000-1400	800-960	700-1400	1400-1600
Arrivals (in Qtl)	13500	3000	9000	12000	1000	6000	11000

## Potato Prices & Arrivals in major Mandi as on 9/8/2012

Mandi	Khandauli	Farrukhabad	Sirsa Ganj	Kanpur	Jalandhar	Indore	Bangalore
Price (in Qtl)	1300-1350	1150-1325	1400	1000-1300	800-960	500-1500	1600-1900
Arrivals (in Qtl)	13500	3000	9000	17200	1000	6000	8000

(Source: AGRIWATCH)

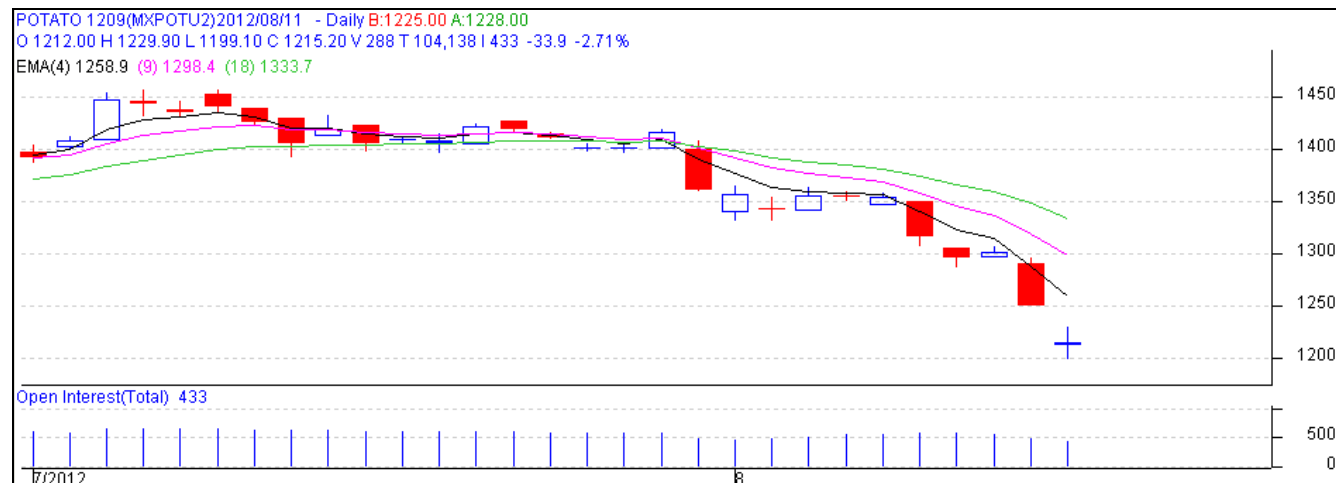
Potato Futures Prices at MCX as on 11<sup>st</sup> August 2012

Symbol	Exchange	Expiry Date	Today's Close Price	Previous Close Price	Net Change	Today's Open Interest	Previous Day Open Interest	Change
POTATO	MCX	14-Aug-12	1224.8	1262.7	-37.9	4200	4320	-120
POTATO	MCX	15-Sep-12	1230	1249.1	-19.1	12990	14640	-1650
POTATO	MCX	15-Oct-12	1313	1341	-28	6090	5610	480
POTATOTRWR	MCX	14-Aug-12	980	983.8	-3.8	480	1860	-1380
POTATOTRWR	MCX	15-Sep-12	1028	1042.5	-14.5	7020	8460	-1440
POTATOTRWR	MCX	16-Oct-12	1119	1120.5	-1.5	2400	2220	180

Potato Futures Prices at NCDEX as on 11<sup>st</sup> August 2012

Symbol	Exchange	Expiry Date	Today's Close Price	Previous Close Price	Net Change	Today's Open Interest	Previous Day Open Interest	Change
POTATO	NCDEX	17-Aug	1180	1176.7	3.3	495	525	-30
POTATO	NCDEX	20-Sep	1190	1182.2	7.8	3420	4080	-660

## Technical Analysis - Potato- September Contract at MCX



MCX- September future for Agra delivery is in bearish phase due to lack of trading interest from traders after FMC strong stance on potato futures like increasing special margins and no fresh positions in near month contract. Prices fell up to Rs. 1200/Qtl today as predicted in our previous daily Report. Some buying emerges near 1200 levels which took prices up and closed near Rs. 1215. If today's low is broken in coming trading session, then there is likely chance of further buying interest at such lower levels

Potato Prices in major markets – Mandi vs. Retail as on 11<sup>th</sup> August 2012

Centre Name	Variety	Min. Price (Rs/Qtl)	Max. Price (Rs/Qtl)	Model Price (Rs/Qtl)	Arrival (MT.)	Retail Price (Rs/Qtl)
AMRITSAR	POTATO STORE	900	1050	1000	25	1500
BARAUT	POTATO STORE	1300	1400	1350	12	1900
BHOPAL	POTATO STORE	1600	1800	1700	42	2200
BHUBANESHWAR	POTATO STORE	1150	1200	1175	650	1350
CHANDIGARH	POTATO STORE	825	1025	925	70	1500
CHENNAI	POTATO FRESH	1800	2000	1900	200	2600
GANGATOK	POTATO STORE	1500	1800	1600	2	2200
GUWAHATI	POTATO FRESH	1600	1700	1650	30	2400
GUWAHATI	POTATO STORE	1400	1800	1450	140	2000
JAIPUR	POTATO STORE	1100	1200	1155	310	1600
JAMMU	POTATO FRESH	1200	1400	1300	54	1800
JAMMU	POTATO STORE	1000	1100	1050	25	1500
LUCKNOW	POTATO STORE	1275	1450	1325	30	1800
NAGPUR	POTATO STORE	1375	1550	1462	250	2000
PATNA	POTATO STORE	1200	1300	1250	90	1800
RAIPUR	POTATO STORE	1300	1550	1440	20	2000
RANCHI	POTATO STORE	1200	1385	1300	250	1600
SHIMLA	POTATO FRESH	1600	1800	1700	24	2200
SRINAGAR	POTATO FRESH	900	1000	950	90	1300
SRINAGAR	POTATO STORE	1300	1400	1350	50	1800
TRIVENDRUM	POTATO FRESH	2000	2400	2200	22	2700

(Source: NHB)

## Disclaimer

The information contained in this document has been compiled by Agriwatch from sources believed to be reliable, such as NHB, Agmarknet, etc. and directly from traders in mandis. However, users of this data are requested to use the information with due caution and crosscheck with other sources. This document is not, and should not be construed as an offer to sell or buy any commodities. This document may not be reproduced, distributed or published without the express consent of SFAC