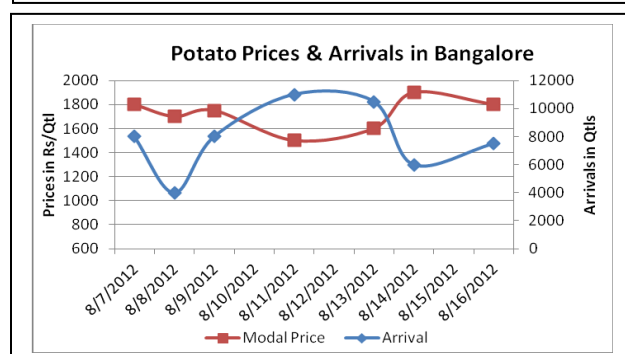
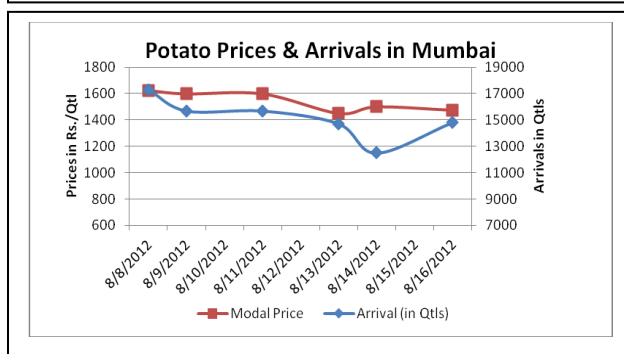
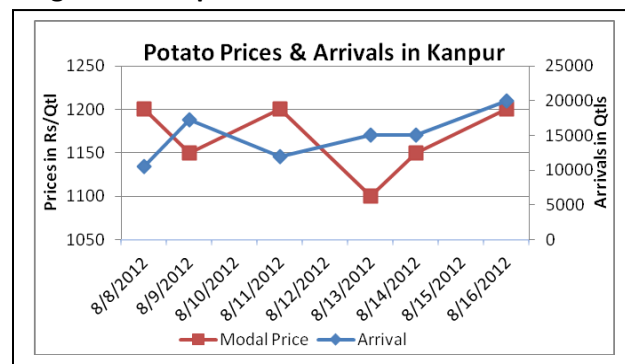
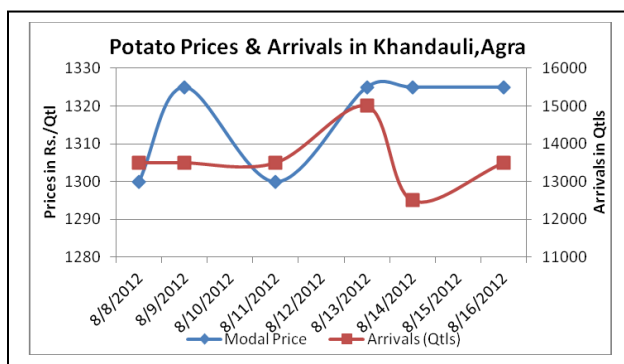


## Potato Fundamentals:

- As per trade sources in Bangalore market, potato of Hasan origin is cheaper by Rs 1 to Rs 2/kg as compared to the potato of U.P origin, which is currently hovering in the range of Rs 16.5/kg to Rs18.5/kg.
- In Purnia (Bihar) ,30% potato has been released compare to 50 % at the same time last year. According to the traders, release from cold storages is low due to anticipation that price might rise in near future.
- In Purnia (Bihar), potatoes are currently hovering in the range of Rs 1200 to Rs1300 /quintal but the farmers/traders are expecting that prices might touch Rs 1500/quintal level and most the state's production is domestically consumed although on an average 3000 quintals potatoes arrives from West Bengal to meet the local demand.
- In Ahmadabad, potato is mainly coming from local region Disha and Digham. Arrivals have increased to 5200 quintals/ day from 3300 quintals/ day in last five days. This is mainly due to increase in demand from other parts of the state. Prices have also increased from Rs 1220 to Rs 1270/ quintal.

## Potato Prices & Arrivals in Producing & Consumption Centers



(Source: AGRIWATCH)

## Potato Prices & Arrivals in major Mandi as on 16/8/2012

Mandi	Khandauli	Farrukhabad	Sirsa Ganj	Kanpur	Jalandhar	Indore	Bangalore
Price (in Qtl)	1300-1350	1150-1250	1250-1350	1000-1400	800-1000	500-1400	1700-1900
Arrivals (in Qtl)	13500	2250	8000	20000	500	7000	7500

## Potato Prices & Arrivals in major Mandi as on 14/8/2012

Mandi	Khandauli	Farrukhabad	Sirsa Ganj	Kanpur	Jalandhar	Indore	Bangalore
Price (in Qtl)	1300-1350	1050-1200	1200-1300	1000-1300	1000	500-1500	1700-2100
Arrivals (in Qtl)	12500	2400	6000	15000	700	7000	6000

(Source: AGRIWATCH)

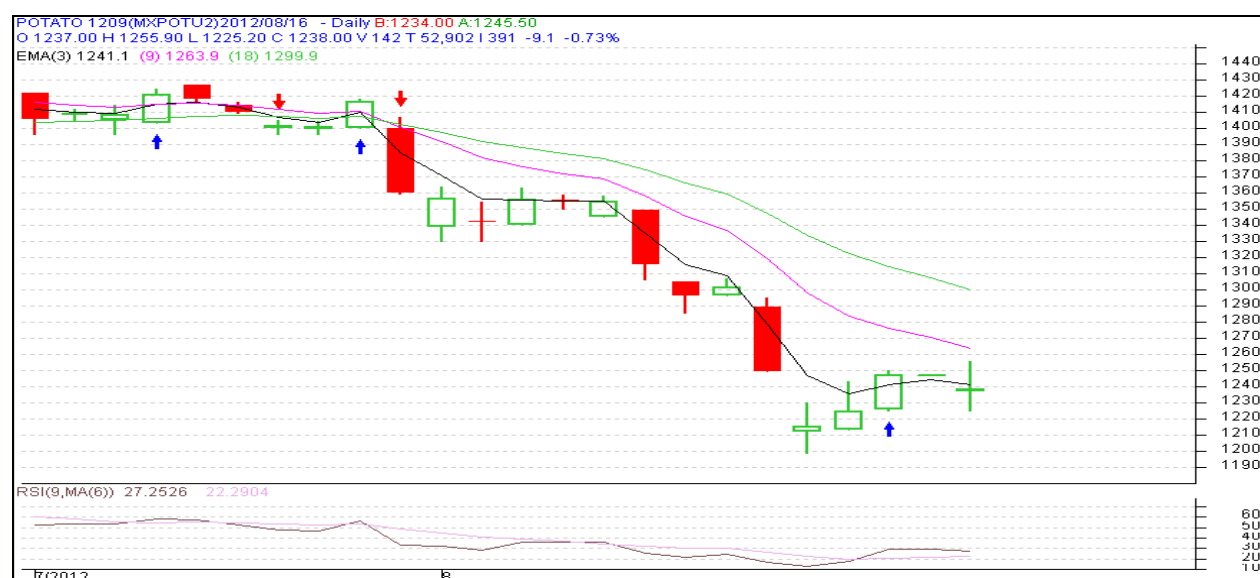
## Potato Futures Prices at MCX as on 16<sup>th</sup> August 2012

Symbol	Exchange	Expiry Date	Today's Close Price	Previous Close Price	Net Change	Today's Open Interest	Previous Day Open Interest	Change
POTATO	MCX	15-Sep-12	1238	1224.3	13.70	11910	12450	-540
POTATO	MCX	15-Oct-12	1340	1326.9	13.10	6720	7080	-360
POTATOTRWR	MCX	15-Sep-12	1019	1031.5	-12.50	6840	6750	90
POTATOTRWR	MCX	16-Oct-12	1123	1127.9	-4.90	3120	2520	600
				Total		28590	28800	-210

## Potato Futures Prices at NCDEX as on 16<sup>th</sup> August 2012

Symbol	Exchange	Expiry Date	Today's Close Price	Previous Close Price	Net Change	Today's Open Interest	Previous Day Open Interest	Change
POTATO	NCDEX	17-Aug	1181	1176.7	4.30	375	495	-120
POTATO	NCDEX	20-Sep	1181	1180.5	0.50	3225	3360	-135
				Total		3600	3855	-255

## Technical Analysis - Potato- September Contract at MCX



**SFAC**  
लघु कृषक  
कृषि व्यापार संघ

Small Farmers'  
Agribusiness  
Consortium



**AGRIWATCH**

Potato Prices in major markets – Mandi vs. Retail as on 16<sup>th</sup> August 2012

Centre Name	Variety	Min. Price (Rs/Qtl)	Max. Price (Rs/Qtl)	Modal Price (Rs/Qtl)	Arrival (MT.)	Retail Price (Rs/Qtl)
ABOHAR	POTATO STORE	920	1180	1050	110	1500
AHMEDABAD	POTATO STORE	1100	1350	1200	169	1700
AMRITSAR	POTATO STORE	900	1000	950	25	1500
BANGALORE	POTATO FRESH	1600	1800	1700	540	2200
BHOPAL	POTATO STORE	1600	1800	1700	80	2000
CHANDIGARH	POTATO STORE	800	1000	900	75	1500
CHENNAI	POTATO FRESH	1800	2100	2000	200	2800
DEHRADUN	POTATO FRESH	1578	1680	1600	26	2800
DEHRADUN	POTATO STORE	1245	1340	1280	55	2000
DELHI	POTATO FRESH	1875	2400	2140	343	2500
GANGATOK	POTATO STORE	1500	1800	1700	2	2000
GUWAHATI	POTATO FRESH	1600	1700	1650	30	2200
GUWAHATI	POTATO STORE	1450	1550	1500	120	2000
HYDERABAD	POTATO FRESH	1100	1750	1500	176.5	1900
JAIPUR	POTATO STORE	1150	1250	1205	220	1800
JAMMU	POTATO FRESH	1200	1400	1300	54	1600
JAMMU	POTATO STORE	900	1000	950	27	1500
KANPUR	POTATO STORE	1000	1300	1150	1450	2000
LUCKNOW	POTATO STORE	1150	1400	1275	35	1700
NAGPUR	POTATO STORE	1450	1550	1500	470	2000
NASIK	POTATO STORE	1400	1600	1510	40	1800
PATNA	POTATO STORE	1150	1250	1200	75	1800
PUNE	POTATO FRESH	1300	1500	1400	565	1800
RAIPUR	POTATO STORE	1400	1500	1450	21	2000
RANCHI	POTATO STORE	1230	1400	1370	220	1600
SHIMLA	POTATO FRESH	1800	2000	1900	22	2500
SRINAGAR	POTATO FRESH	900	1000	940	80	1300
SRINAGAR	POTATO STORE	1400	1500	1450	50	1800
SURAT	POTATO STORE	1400	1500	1450	180	2400
TRIVANDRUM	POTATO FRESH	2000	2400	2200	20	2800

(Source: NHB)

## Disclaimer

The information contained in this document has been compiled by Agriwatch from sources believed to be reliable, such as NHB, Agmarknet, etc. and directly from traders in mandis. However, users of this data are requested to use the information with due caution and crosscheck with other sources. This document is not, and should not be construed as an offer to sell or buy any commodities. This document may not be reproduced, distributed or published without the express consent of SFAC