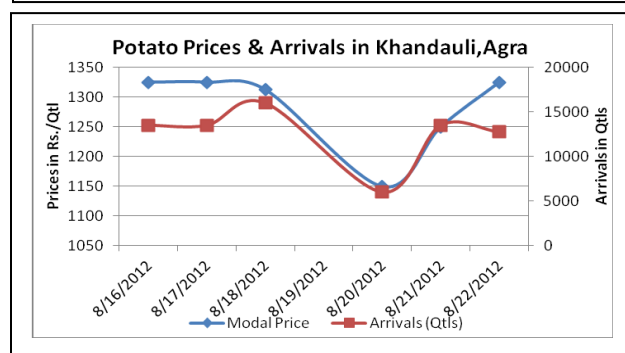
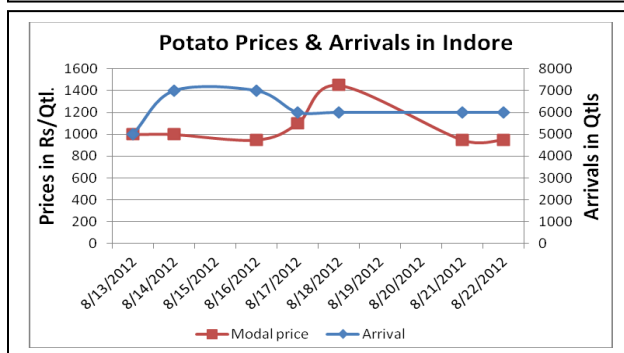
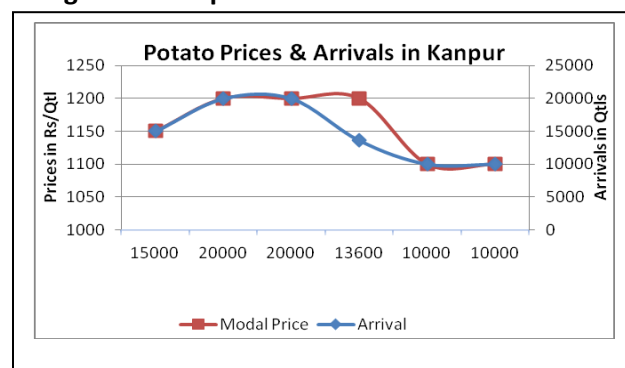
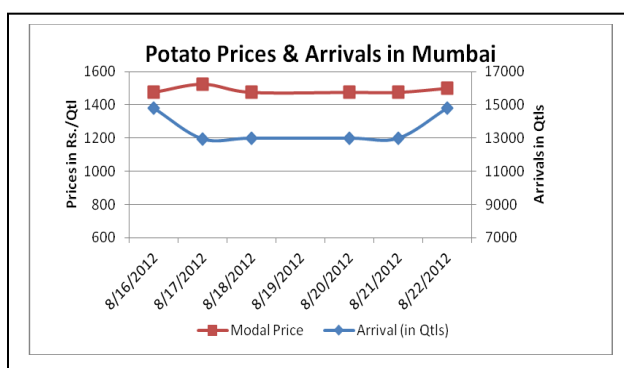


Potato Fundamentals:

- According to trade sources from Khandauli, average release from cold storage is approximately 70-80 trucks per day in last two days. The decline in release from cold storages is due to heavy rainfall out there.
- In Khandauli (Agra), major demand comes from Maharashtra and Karnataka. On an average per day approximately 40%-50% of the total release is supplied to these states.
- According to trade sources in Jalandhar, prices are hovering in the range of Rs800/quintal to Rs900/quintal. Today in market no trade was reported because of heavy rainfall. Arrivals and prices are expected to increase after the rainfall.
- Meanwhile, in Retail market prices are hovering in the range of Rs 1300 to Rs 2800 / quintal. Maximum prices were seen in Chennai followed by Dehradun and Bangalore at Rs2800, Rs2200 and Rs 2200/quintal respectively.

Potato Prices & Arrivals in Producing & Consumption Centers



(Source: AGRIWATCH)

Potato Prices & Arrivals in major Mandi as on 22/8/2012

Mandi	Khandauli	Farrukhabad	Sirsa Ganj	Kanpur	Jalandhar	Indore	Bangalore
Price (in Qtl)	1300-1350	1000-1200	1300	1000-1400	-	500-1400	1300-1500
Arrivals (in Qtl)	12750	2000	6000	10000	-	6000	10000

Potato Prices & Arrivals in major Mandi as on 21/8/2012

Mandi	Khandauli	Farrukhabad	Sirsa Ganj	Kanpur	Jalandhar	Indore	Bangalore
Price (in Qtl)	1200-1300	1050-1250	1300-1350	1000-1200	800-900	500-1400	1400-1600
Arrivals (in Qtl)	13500	2250	5000	10000	500	6000	10000

(Source: AGRIWATCH)

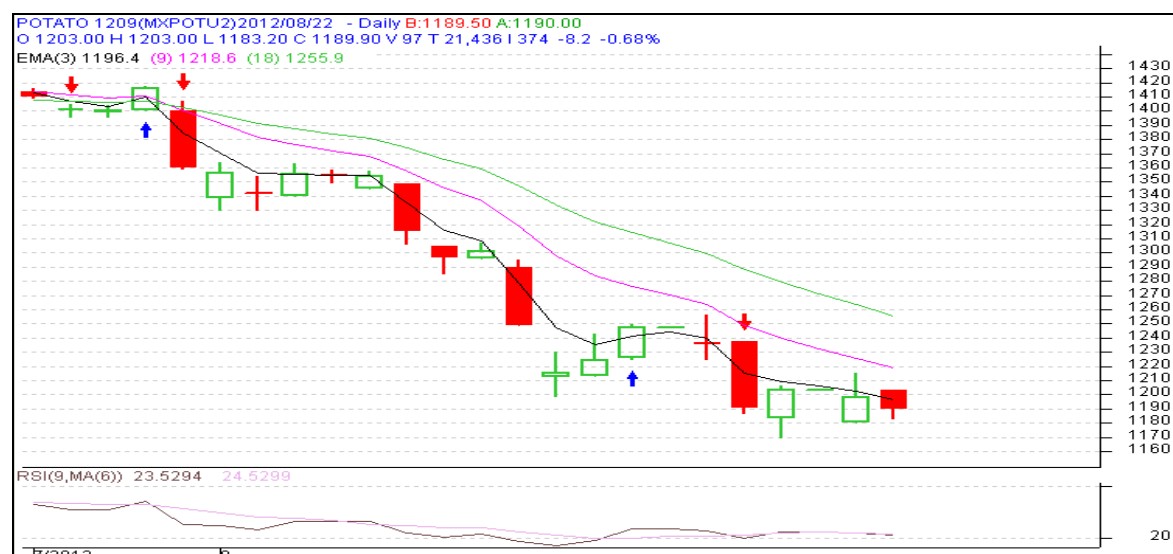
Potato Futures Prices at MCX as on 22nd August 2012

Symbol	Exchange	Expiry Date	Today's Close Price	Previous Close Price	Net Change	Today's Open Interest	Previous Day Open Interest	Change
POTATO	MCX	15-Sep-12	1189.9	1200	-10.10	11220	11850	-630
POTATO	MCX	15-Oct-12	1260	1274	-14.00	5460	5070	390
POTATOTRWR	MCX	15-Sep-12	984	994	-10.00	6450	6570	-120
POTATOTRWR	MCX	16-Oct-12	1047.9	1072	-24.10	2610	2730	-120
				Total			26220	-480

Potato Futures Prices at NCDEX as on 22nd August 2012

Symbol	Exchange	Expiry Date	Today's Close Price	Previous Close Price	Net Change	Today's Open Interest	Previous Day Open Interest	Change
POTATO	NCDEX	20-Sep	1149.5	1162.8	-13.30	3060	2940	120
				Total			2940	120

Technical Analysis - Potato- September Contract at MCX



(Source: AGRIWATCH)

Potato Prices in major markets – Mandi vs. Retail as on 22nd August 2012

Centre Name	Variety	Min. Price (Rs/Qtl)	Max. Price (Rs/Qtl)	Model Price (Rs/Qtl)	Arrival (MT.)	Retail Price (Rs/Qtl)
ABOHAR	POTATO STORE	850	1020	935	105	1500
AHMEDABAD	POTATO STORE	950	1400	1150	246	1700
BANGALORE	POTATO FRESH	1400	1600	1500	774	2200
BARAUT	POTATO STORE	1500	1600	1550	11	2000
BHOPAL	POTATO STORE	1600	2000	1800	64	2200
BHUBANESHWAR	POTATO STORE	1000	1100	1050	500	1450
CHANDIGARH	POTATO STORE	1063	1188	1125	75	1800
CHENNAI	POTATO FRESH	1800	2100	2000	200	2800
DEHRADUN	POTATO FRESH	1400	1475	1450	32	2500
DEHRADUN	POTATO STORE	1200	1292	1266	60	1800
DELHI	POTATO FRESH	1600	1812	1710	951	2200
GANGATOK	POTATO STORE	1500	1800	1600	5	2200
GUWAHATI	POTATO FRESH	1670	1760	1740	20	2200
GUWAHATI	POTATO STORE	1500	1600	1550	130	2000
HYDERABAD	POTATO FRESH	1200	1600	1400	153	1900
JAIPUR	POTATO STORE	1150	1250	1205	260	1700
JAMMU	POTATO FRESH	1300	1400	1350	50	1800
JAMMU	POTATO STORE	1000	1100	1050	36	1300
KOLKATA	POTATO STORE	1180	1200	1190	432	1400
LUCKNOW	POTATO STORE	1175	1500	1400	24	1900
MUMBAI	POTATO FRESH	1400	1600	1500	1480	2200
NAGPUR	POTATO STORE	1450	1550	1500	480	2000
PATNA	POTATO STORE	1125	1275	1200	75	1800
PUNE	POTATO FRESH	1400	1700	1600	551	2000
RAIPUR	POTATO STORE	1300	1400	1350	29	2000
RANCHI	POTATO STORE	1300	1400	1380	210	1600
SHIMLA	POTATO FRESH	1700	1900	1800	24	2500
SRINAGAR	POTATO FRESH	900	1100	1000	70	1300
SRINAGAR	POTATO STORE	1400	1500	1450	30	1800
SURAT	POTATO STORE	1200	1300	1250	200	2000

(Source: NHB)

Disclaimer

The information contained in this document has been compiled by Agriwatch from sources believed to be reliable, such as NHB, Agmarknet, etc. and directly from traders in mandis. However, users of this data are requested to use the information with due caution and crosscheck with other sources. This document is not, and should not be construed as an offer to sell or buy any commodities. This document may not be reproduced, distributed or published without the express consent of SFAC