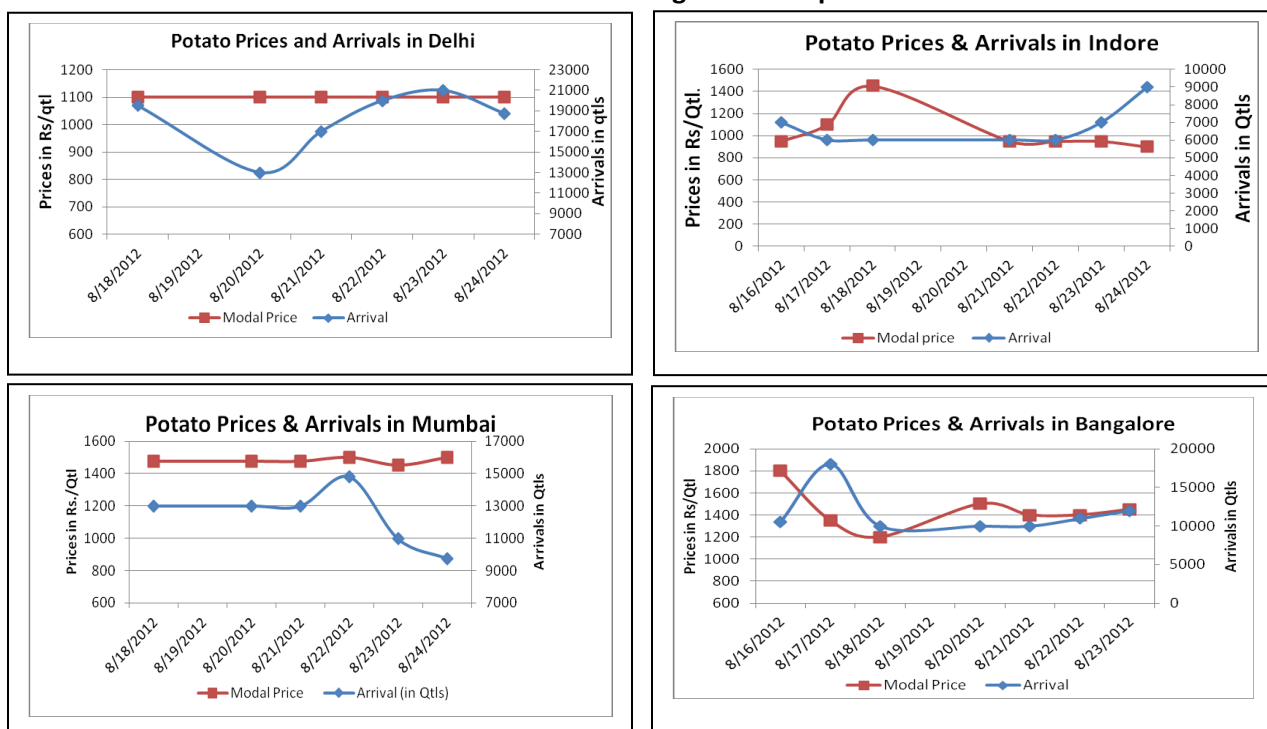


## Potato Fundamentals:

- According to trade sources, in West Bengal, approximately 40%-45 % potato has been released from cold storages. Last year release was less from this year which was around 30%-35% at this time period.
- In Purnia (Bihar), approximately 30-35% potato has released from the cold storages compared to 50% released at the same time last year. Release from cold storages is low due to anticipation that prices might rise in near future.
- In Bangalore, potato is mainly coming from U.P and Hasan which are contributing 60% and 40% respectively to the total arrival. As per trader, potato from 'Hasan' will be hardly available in the market for next one month because of low crop production this year due to deficit rainfall and late arrival of monsoon.
- In retail market, prices are hovering in the range of Rs 1500to Rs 2800 all across the country. Prices in major growing areas like U.P and West Bengal are above Rs1600/ quintal.

## Potato Prices & Arrivals in Producing & Consumption Centers



(Source: AGRIWATCH)

## Potato Prices & Arrivals in major Mandi as on 24/8/2012

Mandi	Khandauli	Farrukhabad	Sirsa Ganj	Kanpur	Jalandhar	Indore	Bangalore
Price (in Qtl)	1300	1100-1200	1300	1200-1300	600-900	500-1300	1400-1500
Arrivals (in Qtl)	12000	3000	8000	7500	-	9000	12000

## Potato Prices & Arrivals in major Mandi as on 23/8/2012

Mandi	Khandauli	Farrukhabad	Sirsa Ganj	Kanpur	Jalandhar	Indore	Bangalore
Price (in Qtl)	1300	1100-1200	1300	1000-1400	700-900	500-1400	1300-1500
Arrivals (in Qtl)	12000	3000	8000	10000	-	7000	10000

(Source: AGRIWATCH)

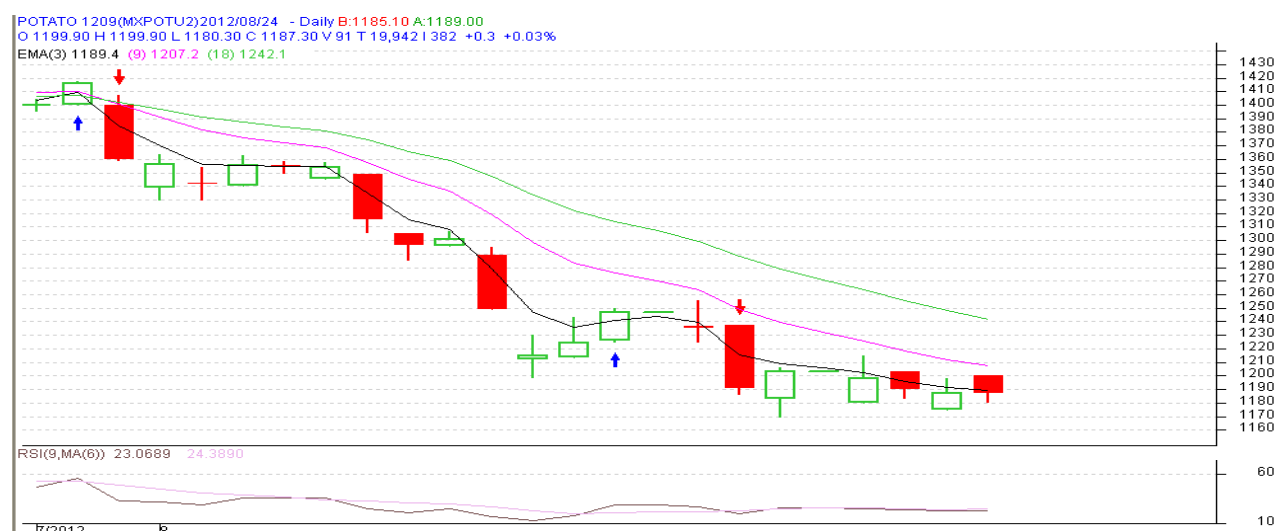
## Potato Futures Prices at MCX as on 24<sup>th</sup> August 2012

Symbol	Exchange	Expiry Date	Today's Close Price	Previous Close Price	Net Change	Today's Open Interest	Previous Day Open Interest	Change
POTATO	MCX	15-Sep-12	1187.3	1187	0.30	11460	11130	330
POTATO	MCX	15-Oct-12	1247.1	1262	-14.90	6150	5520	630
POTATOTRWR	MCX	15-Sep-12	981	977.7	3.30	5790	6150	-360
POTATOTRWR	MCX	16-Oct-12	1046.5	1049.1	-2.60	2970	2670	300
				Total			25470	900

## Potato Futures Prices at NCDEX as on 24<sup>th</sup> August 2012

Symbol	Exchange	Expiry Date	Today's Close Price	Previous Close Price	Net Change	Today's Open Interest	Previous Day Open Interest	Change
POTATO	NCDEX	20-Sep	1136.9	1145.3	-8.40	3150	3180	-30
				Total			3180	-30

## Technical Analysis - Potato- September Contract at MCX



(Source: AGRIWATCH)

Potato Prices in major markets – Mandi vs. Retail as on 24<sup>th</sup> August 2012

Centre Name	Variety	Min. Price (Rs/Qtl)	Max. Price (Rs/Qtl)	Modal Price (Rs/Qtl)	Arrival (MT.)	Retail Price (Rs/Qtl)
AGRA	POTATO STORE	1000	1160	1080	245	1600
AHMEDABAD	POTATO STORE	950	1400	1150	241	1700
AMRITSAR	POTATO STORE	750	850	800	28	1500
BANGALORE	POTATO FRESH	1200	1500	1350	738	2000
BARAUT	POTATO STORE	1300	1400	1350	12	1800
BHOPAL	POTATO STORE	1200	1400	1300	95	1600
BHUBANESHWAR	POTATO STORE	1150	1200	1175	500	1550
CHANDIGARH	POTATO STORE	900	1100	1000	75	1500
CHENNAI	POTATO FRESH	1800	2000	1900	220	2800
DEHRADUN	POTATO FRESH	1400	1470	1445	28	2500
DEHRADUN	POTATO STORE	1208	1290	1260	61	1800
DELHI	POTATO FRESH	1600	1812	1710	1061	2000
GANGATOK	POTATO STORE	1400	1800	1600	3	2000
GUWAHATI	POTATO FRESH	1650	1750	1700	30	2200
GUWAHATI	POTATO STORE	1550	1650	1600	140	2000
HYDERABAD	POTATO FRESH	1200	1750	1600	167	1900
JAIPUR	POTATO STORE	1100	1200	1155	258	1600
JAMMU	POTATO FRESH	1300	1400	1350	45	2000
JAMMU	POTATO STORE	1000	1200	1100	45	1400
KOLKATA	POTATO STORE	1190	1200	1195	423	1400
LUCKNOW	POTATO STORE	1200	1500	1350	24	1900
MUMBAI	POTATO FRESH	1400	1600	1500	976	2200
PATNA	POTATO STORE	1125	1250	1187	45	1800
PUNE	POTATO FRESH	1400	1600	1500	387	1800
RAIPUR	POTATO STORE	1300	1400	1330	35	2000
RANCHI	POTATO STORE	1285	1350	1300	250	1600
SHIMLA	POTATO FRESH	2000	2200	2100	25	2500
SRINAGAR	POTATO FRESH	1100	1200	1150	60	1500
SRINAGAR	POTATO STORE	1300	1450	1400	40	1800
SURAT	POTATO STORE	1200	1350	1300	210	2000

(Source: NHB)

## Disclaimer

The information contained in this document has been compiled by Agriwatch from sources believed to be reliable, such as NHB, Agmarknet, etc. and directly from traders in mandis. However, users of this data are requested to use the information with due caution and crosscheck with other sources. This document is not, and should not be construed as an offer to sell or buy any commodities. This document may not be reproduced, distributed or published without the express consent of SFAC