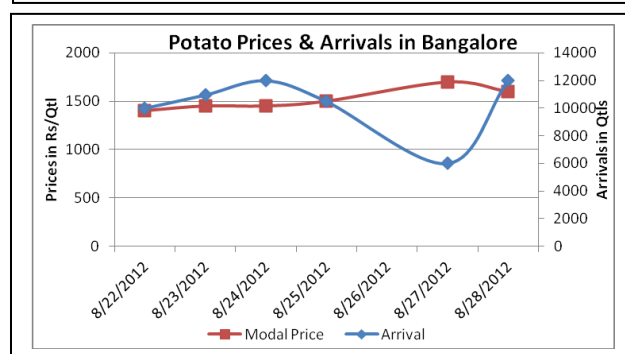
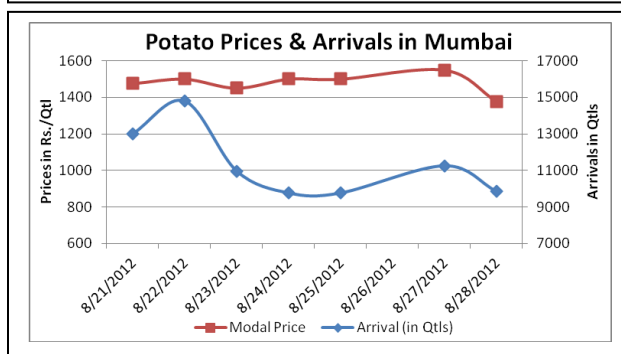
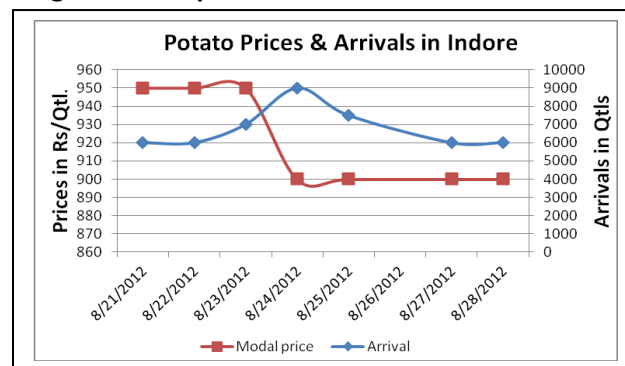
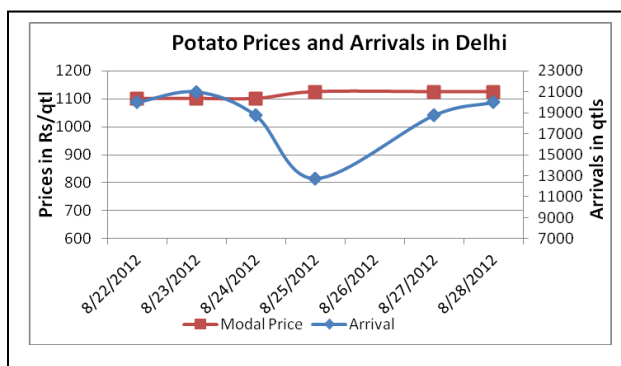


Potato Fundamentals:

- In Bangalore, only local produced potato of Hassan origin is available in market. According to trade sources, arrivals from U.P have declined because of irregular supply due to heavy rainfall.
- According to trade sources, the State government of West Bengal has decided to allow the supply of potatoes outside the state after October. The reason is that new crop starts coming from November month, so scarcity of potato will not be within the state at that time.
- In Purnia (Bihar), approximately 30-35% potato has released from the cold storages compared to 50% released at the same time last year. According to trade sources, prices were bounded to Rs 1200/ quintal in month of August. Farmers were expecting the prices to cross Rs1400/ quintal. So, the release from cold storages is low.
- Meanwhile, in retail market prices are hovering in the range of Rs1450/ quintal to Rs3400/ quintal. Maximum prices were seen in Trivandrum at Rs 3400 / quintal which are of fresh potatoes. Lowest prices were seen in Bhopal at Rs1450/quintal.

Potato Prices & Arrivals in Producing & Consumption Centers



Potato Prices & Arrivals in major Mandi as on 28/8/2012

Mandi	Khandauli	Farrukhabad	Sirsa Ganj	Kanpur	Jalandhar	Indore	Bangalore
Price (in Qtl)	1200	1000-1200	1300-1450	-	700-960	500-1300	1500-1700
Arrivals (in Qtl)	16000	2000	8000	-	-	5000	12000

Potato Prices & Arrivals in major Mandi as on 27/8/2012

Mandi	Khandauli	Farrukhabad	Sirsa Ganj	Kanpur	Jalandhar	Indore	Bangalore
Price (in Qtl)	1000-1200	1050-1200	1300	1400	700-800	500-1300	1500-1900
Arrivals (in Qtl)	11250	1800	6000	7500	-	6000	6000

(Source: AGRIWATCH)



SFAC
लघु कृषक
कृषि व्यवहार संघ

Small Farmers'
Agribusiness
Consortium



AGRIWATCH

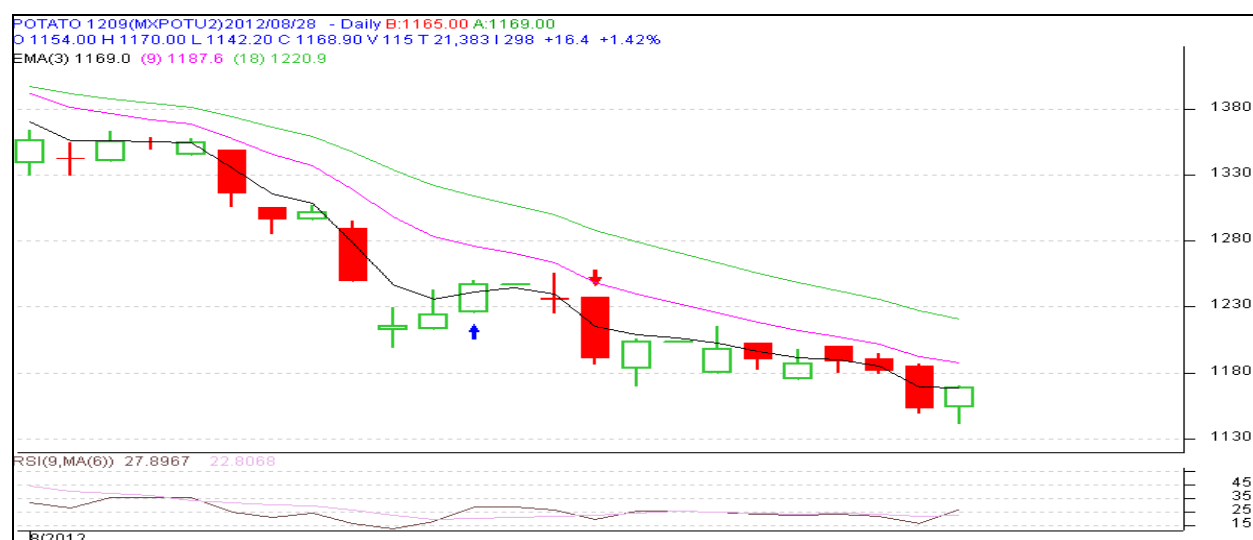
Potato Futures Prices at MCX as on 28th August 2012

Symbol	Exchange	Expiry Date	Today's Close Price	Previous Close Price	Net Change	Today's Open Interest	Previous Day Open Interest	Change
POTATO	MCX	15-Sep-12	1168.9	1157	11.90	8940	9210	-270
POTATO	MCX	15-Oct-12	1227	1220	7.00	8220	8130	90
POTATOTRWR	MCX	15-Sep-12	950	948	2.00	4860	4890	-30
POTATOTRWR	MCX	16-Oct-12	1020	1030	-10.00	3180	3390	-210
				Total			25620	-420

Potato Futures Prices at NCDEX as on 28th August 2012

Symbol	Exchange	Expiry Date	Today's Close Price	Previous Close Price	Net Change	Today's Open Interest	Previous Day Open Interest	Change
POTATO	NCDEX	20-Sep	1100	1081.8	18.20	3540	3810	-270
				Total			3810	-270

Technical Analysis - Potato- September Contract at MCX



(Source: AGRIWATCH)

Potato Prices in major markets – Mandi vs. Retail as on 28th August 2012

Centre Name	Variety	Min. Price (Rs/Qtl)	Max. Price (Rs/Qtl)	Modal Price (Rs/Qtl)	Arrival (MT.)	Retail Price (Rs/Qtl)
ABOHAR	POTATO STORE	950	1220	1085	105	1800
AGRA	POTATO STORE	1000	1150	1075	235	1600
AHMEDABAD	POTATO STORE	950	1400	1150	201	1700
AMRITSAR	POTATO STORE	760	850	800	28	1500
BANGALORE	POTATO FRESH	1300	1500	1400	900	2000
BARAUT	POTATO STORE	1300	1400	1350	12	1800
BHOPAL	POTATO STORE	1260	1450	1350	70	1800
BHUBANESHWAR	POTATO STORE	1150	1200	1175	600	1450
CHANDIGARH	POTATO STORE	900	1100	1000	70	1500
CHENNAI	POTATO FRESH	1800	2000	1900	220	2800
DEHRADUN	POTATO FRESH	1472	1532	1512	28	2500
DEHRADUN	POTATO STORE	1257	1316	1292	64	1800
DELHI	POTATO FRESH	1687	2000	1850	1474	2200
GANGATOK	POTATO STORE	1600	2000	1800	5	2400
GUWAHATI	POTATO FRESH	1600	1700	1650	20	2200
GUWAHATI	POTATO STORE	1450	1560	1500	130	2000
JAIPUR	POTATO STORE	1200	1300	1255	180	1800
JAMMU	POTATO FRESH	1200	1400	1300	50	1800
JAMMU	POTATO STORE	1000	1200	1100	40	1400
LUCKNOW	POTATO STORE	1250	1500	1375	30	1900
MUMBAI	POTATO FRESH	1300	1600	1450	984	2200
NAGPUR	POTATO STORE	1400	1600	1500	160	2000
PATNA	POTATO STORE	1125	1250	1187	75	1800
PUNE	POTATO FRESH	1200	1600	1400	491	1800
RAIPUR	POTATO STORE	1300	1400	1350	33	2000
RANCHI	POTATO STORE	1240	1300	1275	250	1600
SHIMLA	POTATO FRESH	1700	2000	1900	24	2500
SRINAGAR	POTATO FRESH	1100	1300	1250	70	1500
SRINAGAR	POTATO STORE	1300	1450	1370	40	1800
SURAT	POTATO STORE	1200	1400	1300	180	2000
TRIVANDRUM	POTATO FRESH	2500	2700	2600	25	3400

(Source: NHB)

Disclaimer

The information contained in this document has been compiled by Agriwatch from sources believed to be reliable, such as NHB, Agmarknet, etc. and directly from traders in mandis. However, users of this data are requested to use the information with due caution and crosscheck with other sources. This document is not, and should not be construed as an offer to sell or buy any commodities. This document may not be reproduced, distributed or published without the express consent of SFAC