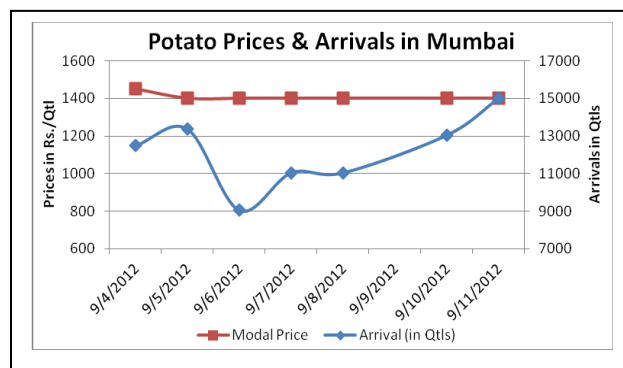
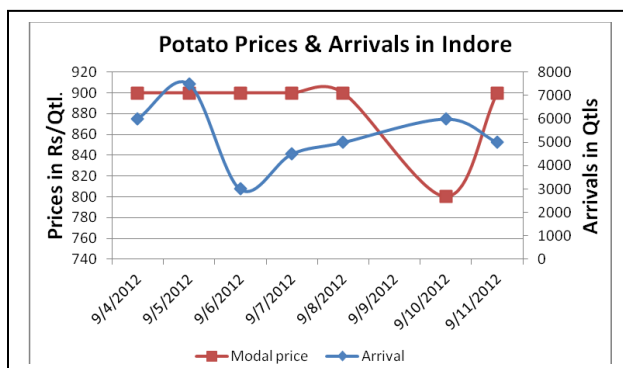
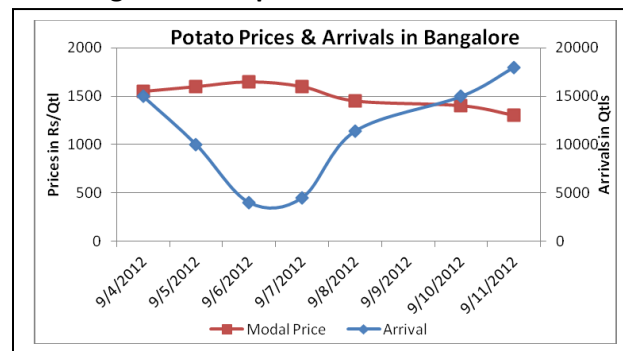
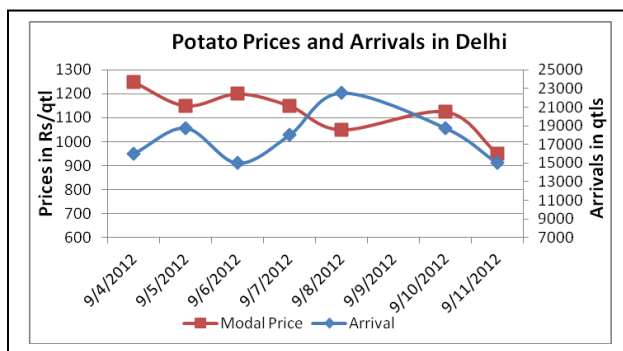


Potato Fundamentals:

- In Indore, pace of release from cold storages has decreased which resulted into increase in prices. The average arrivals fall to 5000 quintals from 6000 quintal. Prices are expected to increase further if situation remains same.
- In Gujarat, approximately 55% of potato has been released from cold storages. Prices are hovering in the range of Rs 1250 to Rs 1400/ quintal and are likely to remain stable throughout the week. Demand for Gujarat origin potato mainly comes from Maharashtra and Rajasthan.
- In Burdwan (West Bengal), wholesale prices have fallen to Rs 1010 from 1090 in last two days. The reason is that farmers are releasing their stocks from cold storages in fear of low prices in future as potato export outside state is banned.
- Meanwhile in retail market, prices are hovering in the range of Rs 1320 to Rs 3000/ quintal. Maximum prices were seen in Trivandrum at Rs3000/ quintal followed by Chennai and Gangtok at Rs 2800 /quintal and Rs 2400 /quintal respectively.

Potato Prices & Arrivals in Producing & Consumption Centers



(Source: AGRIWATCH)

Potato Prices & Arrivals in major Mandi as on 11/9/2012

Mandi	Khandauli	Farrukhabad	Sirsa Ganj	Kanpur	Jalandhar	Indore	Bangalore
Price (in Qtl)	1100-1200	1000-1100	110-1240	800-1100	300-850	500-1300	1100-1500
Arrivals (in Qtl)	22500	1950	6000	8000	-	5000	10500

Potato Prices & Arrivals in major Mandi as on 10/9/2012

Mandi	Khandauli	Farrukhabad	Sirsa Ganj	Kanpur	Jalandhar	Indore	Bangalore
Price (in Qtl)	1200-1300	1000-1100	1200	1000-1200	600-900	300-1300	1200-1600
Arrivals (in Qtl)	22500	2400	6000	10000	-	6000	18000

(Source: AGRIWATCH)

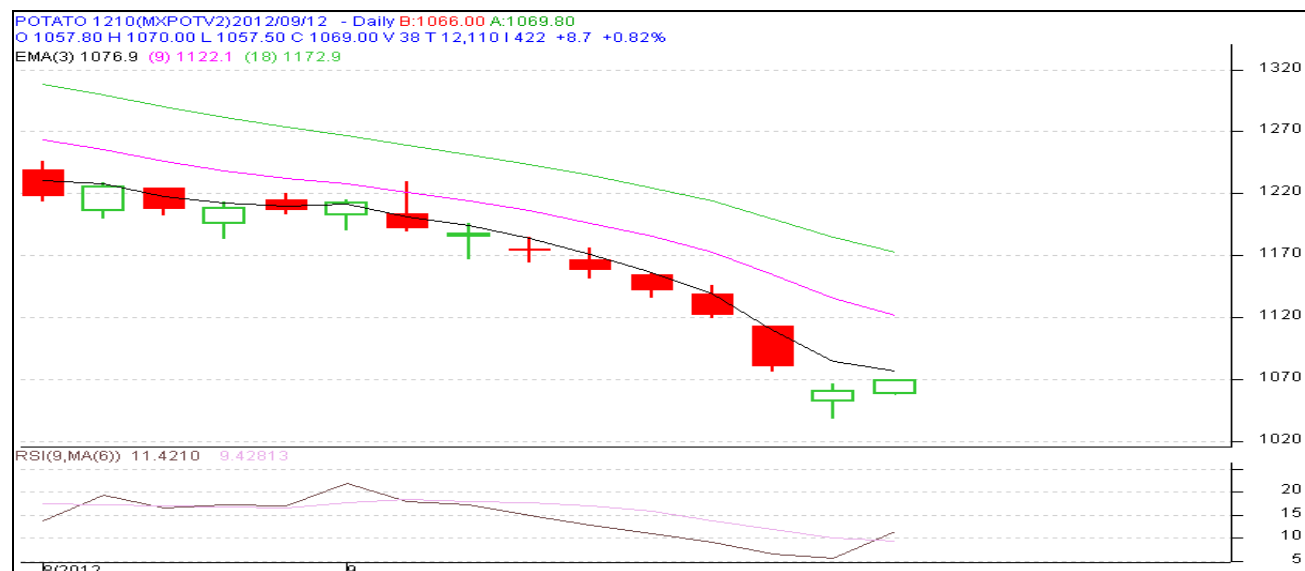
Potato Futures Prices at MCX as on 11th September 2012

Symbol	Exchange	Expiry Date	Today's Close Price	Previous Close Price	Net Change	Today's Open Interest	Previous Day Open Interest	Change
POTATO	MCX	15-Sep-12	975	998	-23.00	4590	6300	-1710
POTATO	MCX	15-Oct-12	1060.3	1078.6	-18.30	12930	11730	1200
POTATO	MCX	15-Mar-13	738.9	719.3	19.60	8400	7830	570
POTATOTRWR	MCX	15-Sep-12	895.7	874.3	21.40	2010	2010	0
POTATOTRWR	MCX	16-Oct-12	899	914.7	-15.70	4980	4650	330
				Total				390

Potato Futures Prices at NCDEX as on 11th September 2012

Symbol	Exchange	Expiry Date	Today's Close Price	Previous Close Price	Net Change	Today's Open Interest	Previous Day Open Interest	Change
POTATO	NCDEX	20-Sep	1027	1027	0	1230	1545	-315
				Total			1545	-315

Monthly Chart of MCX- Agra October Contract:



(Source: AGRIWATCH)

Potato Prices in major markets – Mandi vs. Retail as on 11th September 2012

Centre Name	Variety	Min. Price (Rs/Qtl)	Max. Price (Rs/Qtl)	Modal Price (Rs/Qtl)	Arrival (MT.)	Retail Price (Rs/Qtl)
ABOHAR	POTATO STORE	850	1025	938	90	1800
AGRA	POTATO STORE	900	1080	990	190	1600
AMRITSAR	POTATO STORE	700	750	725	28	1200
BANGALORE	POTATO FRESH	1400	1600	1500	1035	2000
BARAUT	POTATO STORE	1600	1700	1650	11	2100
BHOPAL	POTATO STORE	1150	1250	1200	80	1400
BHUBANESHWAR	POTATO STORE	1080	1100	1090	600	1350
CHANDIGARH	POTATO STORE	875	1125	1000	70	1600
CHENNAI	POTATO FRESH	1800	2000	1900	200	2800
DELHI	POTATO FRESH	1200	2200	1700	1285	2400
GANGATOK	POTATO STORE	1800	2200	2000	5	2400
GUWAHATI	POTATO FRESH	1600	1700	1650	35	2200
GUWAHATI	POTATO STORE	1380	1450	1420	120	1800
JAIPUR	POTATO STORE	1000	1100	1060	258	1600
JAMMU	POTATO FRESH	1400	1500	1450	18	1800
JAMMU	POTATO STORE	1100	1200	1150	25	1500
KOLKATA	POTATO STORE	1130	1150	1140	520	1320
LUCKNOW	POTATO STORE	1100	1475	1350	26	1800
MUMBAI	POTATO FRESH	1350	1500	1400	800	2000
NAGPUR	POTATO STORE	1400	1600	1500	350	2000
NASIK	POTATO STORE	1400	1600	1510	45	1800
PATNA	POTATO STORE	1080	1200	1140	75	1700
PUNE	POTATO FRESH	1200	1550	1400	527	1700
RAIPUR	POTATO STORE	1300	1400	1360	35	2000
RANCHI	POTATO STORE	980	1075	1000	250	1400
SHIMLA	POTATO FRESH	1500	1600	1550	24	2000
SRINAGAR	POTATO FRESH	1200	1300	1270	40	1500
SRINAGAR	POTATO STORE	1350	1450	1400	50	1800
TRIVANDRUM	POTATO FRESH	2000	2500	2300	18	3000

(Source: NHB)

Disclaimer

The information contained in this document has been compiled by Agriwatch from sources believed to be reliable, such as NHB, Agmarknet, etc. and directly from traders in mandis. However, users of this data are requested to use the information with due caution and crosscheck with other sources. This document is not, and should not be construed as an offer to sell or buy any commodities. This document may not be reproduced, distributed or published without the express consent of SFAC