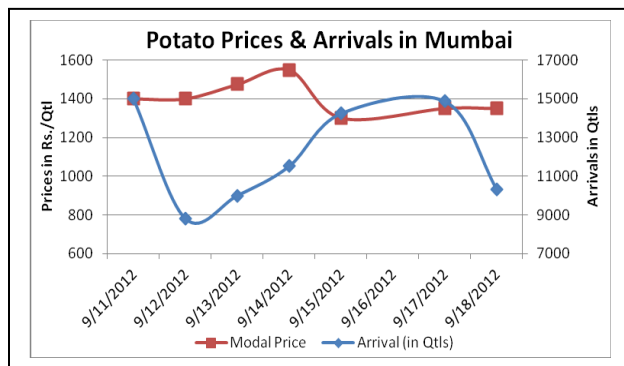
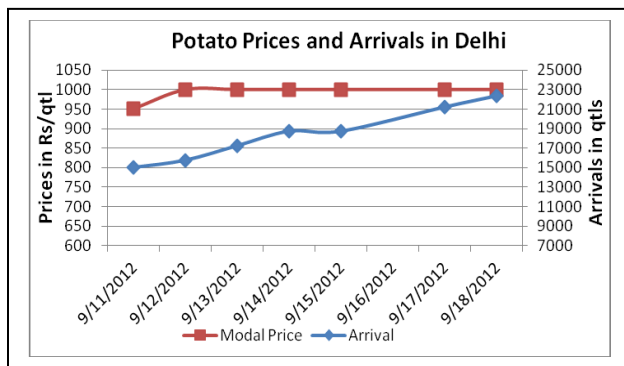
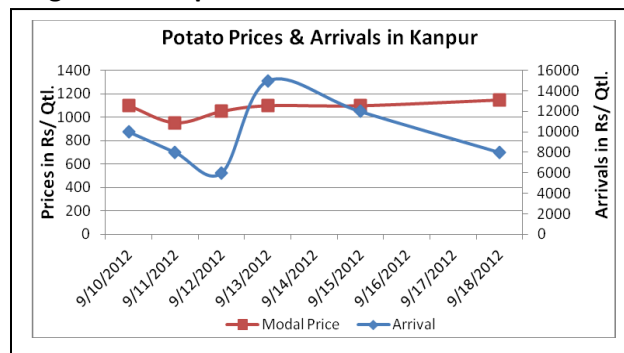
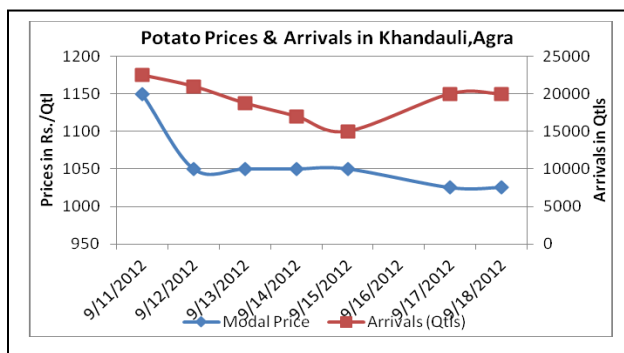


Potato Fundamentals:

- According to trade sources, sowing of early Rabi crop in Punjab is expected to delay by 15 days as of heavy rainfall. Usually time period for early Rabi is September last week but this time they are expecting the sowing after mid October.
- In Tarkeshwar (West Bengal), approximately 56% potato has been released compared to 53% at this time last year. Prices are hovering in the range of Rs 1100 to Rs1150/ quintal. According to trade sources prices are expected to decrease or remain stable in coming days.
- In Khandauli (Agra), prices have fallen to Rs 1125/ quintal from Rs1150 / quintal in last two days which is due to increase in arrivals. According to trade sources, farmers are releasing much of their stock in fear of low prices in future as traders have stocked more than expected.
- According to trade sources, fresh potato is hovering in the range of Rs 1700 to Rs 3000 / quintal all across the country. Maximum prices were seen in Dehradun at Rs 3000/ quintal followed by Chennai and Trivandrum at Rs 2800 and Rs 2500/ quintal respectively.

Potato Prices & Arrivals in Producing & Consumption Centers



(Source: AGRIWATCH)

Potato Prices & Arrivals in major Mandi as on 18/9/2012

Mandi	Khandauli	Farrukhabad	Sirsa Ganj	Kanpur	Ludhiana	Indore	Bangalore
Price (in Qtl)	1000-1050	1000-1150	1200	1000-1300	600-900	1000-1200	1300-1500
Arrivals (in Qtl)	20000	3200	5600	8000	2000	6500	8000

Potato Prices & Arrivals in major Mandi as on 17/9/2012

Mandi	Khandauli	Farrukhabad	Sirsa Ganj	Kanpur	Ludhiana	Indore	Bangalore
Price (in Qtl)	1000-1050	1000-1150	1100-1150	-	600-900	500-1200	1000-1200
Arrivals (in Qtl)	20000	3520	3750	-	1250	7500	12000

(Source: AGRIWATCH)



SFAC
लघु कृषक
कृषि व्यवहार संघ

Small Farmers'
Agribusiness
Consortium



AGRIWATCH

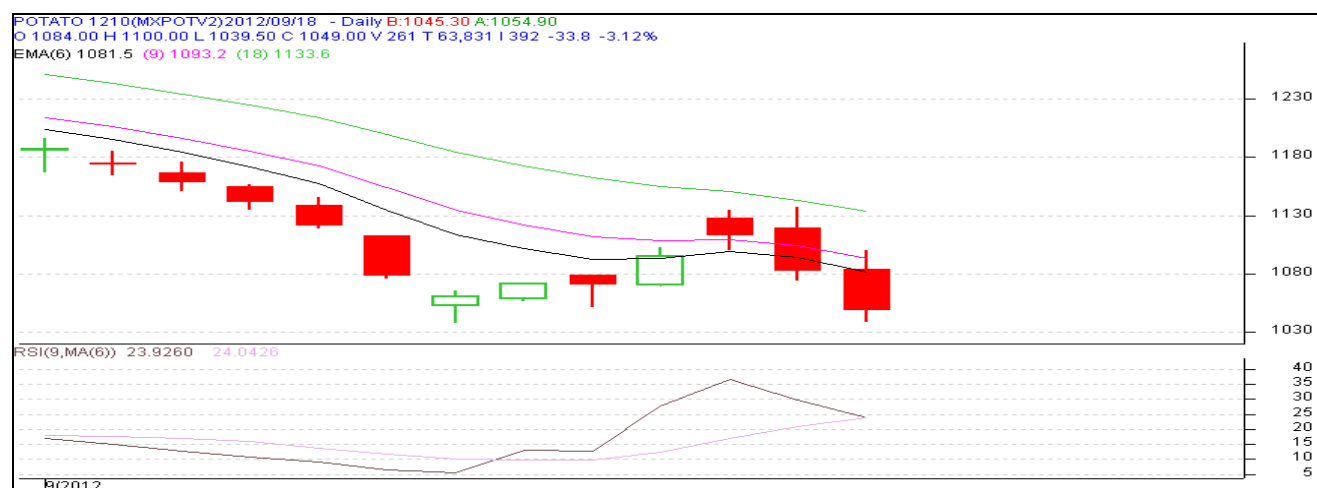
Potato Futures Prices at MCX as on 18th September 2012

Symbol	Exchange	Expiry Date	Today's Close Price	Previous Close Price	Net Change	Today's Open Interest	Previous Day Open Interest	Change
POTATO	MCX	15-Oct-12	1049	1079.1	-30.10	11760	12840	-1080
POTATO	MCX	15-Mar-13	737	733	4.00	8490	8040	450
POTATO	MCX	15-Apr-13	698.4	721.2	-22.80	2310	1260	1050
POTATOTRWR	MCX	15-Oct-12	910	931	-21.00	5820	5250	570
				Total				990

Potato Futures Prices at NCDEX as on 18th September 2012

Symbol	Exchange	Expiry Date	Today's Close Price	Previous Close Price	Net Change	Today's Open Interest	Previous Day Open Interest	Change
POTATO	NCDEX	20-Sep	1026.5	1026.5	0.00	1170	1170	0
				Total			1170	0

Monthly Chart of MCX- Agra October Contract:



(Source: AGRIWATCH)

]

Potato Prices in major markets – Mandi vs. Retail as on 18th September 2012

Centre Name	Variety	Min. Price (Rs/Qtl)	Max. Price (Rs/Qtl)	Modal Price (Rs/Qtl)	Arrival (MT.)	Retail Price (Rs/Qtl)
AGRA	POTATO STORE	900	1000	950	200	1400
BARAUT	POTATO STORE	1300	1400	1350	12	1800
BHOPAL	POTATO STORE	1300	1500	1400	85	1600
BHUBANESHWAR	POTATO STORE	1020	1060	1040	600	1300
CHENNAI	POTATO FRESH	1800	2000	1900	200	2800
DEHRADUN	POTATO FRESH	1570	1642	1585	37	3000
DEHRADUN	POTATO STORE	1315	1366	1325	63	2000
DELHI	POTATO FRESH	1750	2200	1975	1531	2400
GANGATOK	POTATO STORE	1800	2000	1900	3	2500
GUWAHATI	POTATO FRESH	1650	1750	1700	28	2200
GUWAHATI	POTATO STORE	1400	1500	1450	90	1800
HYDERABAD	POTATO FRESH	1000	1600	1500	230	1900
JAIPUR	POTATO STORE	1100	1200	1160	222	1700
JAMMU	POTATO FRESH	1500	1600	1550	27	2000
JAMMU	POTATO STORE	1100	1200	1150	36	1500
LUCKNOW	POTATO STORE	1100	1350	1200	30	1800
MUMBAI	POTATO FRESH	1250	1450	1350	1032	2000
NAGPUR	POTATO STORE	1125	1375	1250	390	1800
PATNA	POTATO STORE	1025	1225	1125	60	1700
PUNE	POTATO FRESH	1300	1500	1400	755	1700
RAIPUR	POTATO STORE	1250	1400	1300	30	2000
RANCHI	POTATO STORE	1018	1100	1045	250	1400
SHIMLA	POTATO FRESH	1500	1600	1550	20	2000
SURAT	POTATO STORE	1200	1300	1250	200	1800
TRIVANDRUM	POTATO FRESH	1800	2000	1900	18	2500

(Source: NHB)

Disclaimer

The information contained in this document has been compiled by Agriwatch from sources believed to be reliable, such as NHB, Agmarknet, etc. and directly from traders in mandis. However, users of this data are requested to use the information with due caution and crosscheck with other sources. This document is not, and should not be construed as an offer to sell or buy any commodities. This document may not be reproduced, distributed or published without the express consent of SFAC