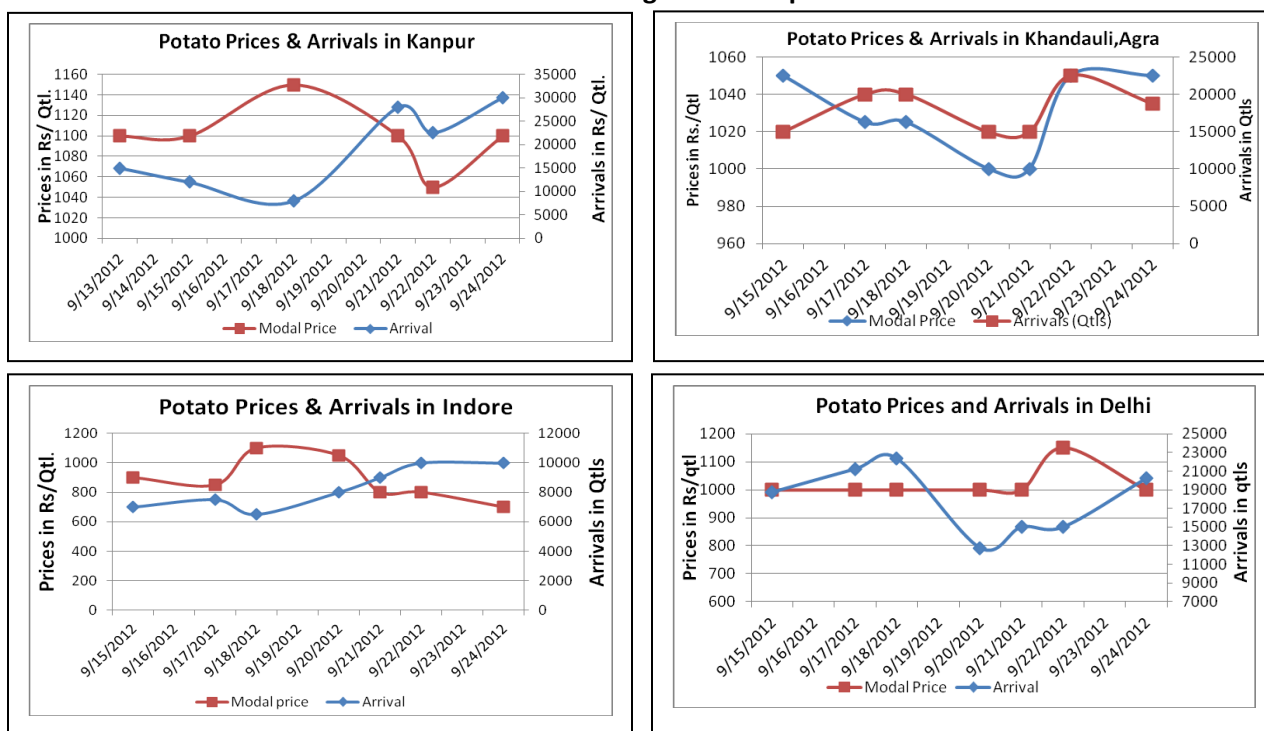


Potato Fundamentals:

- In Indore arrivals are continuously increasing from last few days as farmers/traders are releasing maximum of their stocks in fear of further decline in prices. Prices have fallen to Rs 800/ quintal from Rs 900 / quintal in last one week.
- In major markets, all across the country arrivals have increased as farmers/traders are expecting prices to fall in coming days. So, to minimize their losses they are releasing maximum of their stocks.
- In future market, MCX -potato October contract was decreased by Rs 14.60 compared to yesterday price of Rs 1049.6 per quintal as because of sluggish demand and high arrivals in market.
- In Delhi market, arrivals have increased to 20250 quintals from 12750 quintals in last four days. Arrivals are mainly coming from U.P, Punjab, H.P and Karnataka. Prices were stable throughout the week but fall by Rs 50/ quintal yesterday because arrivals increased by 25% compared to day before arrival.

Potato Prices & Arrivals in Producing & Consumption Centers



(Source: AGRIWATCH)

Potato Prices & Arrivals in major Mandi as on 24/9/2012

| Mandi | Khandauli | Farrukhabad | Sirsa Ganj | Kanpur | Ludhiana | Indore | Bangalore |
|-------------------|-----------|-------------|------------|-----------|----------|----------|-----------|
| Price (in Qtl) | 1000-1100 | 1100-1300 | 1100-1140 | 1000-1200 | 600-900 | 300-1100 | 900-1500 |
| Arrivals (in Qtl) | 18750 | 9000 | 5250 | 30000 | 3750 | 10000 | 19500 |

Potato Prices & Arrivals in major Mandi as on 22/9/2012

| Mandi | Khandauli | Farrukhabad | Sirsa Ganj | Kanpur | Ludhiana | Indore | Bangalore |
|-------------------|-----------|-------------|------------|-----------|----------|----------|-----------|
| Price (in Qtl) | 1000-1100 | 1100-1300 | 1100-1150 | 1000-1100 | 600-900 | 500-1100 | 1200-1650 |
| Arrivals (in Qtl) | 22500 | 9000 | 5000 | 22500 | 1750 | 10000 | 13500 |

(Source: AGRIWATCH)



Small Farmers'
Agribusiness
Consortium

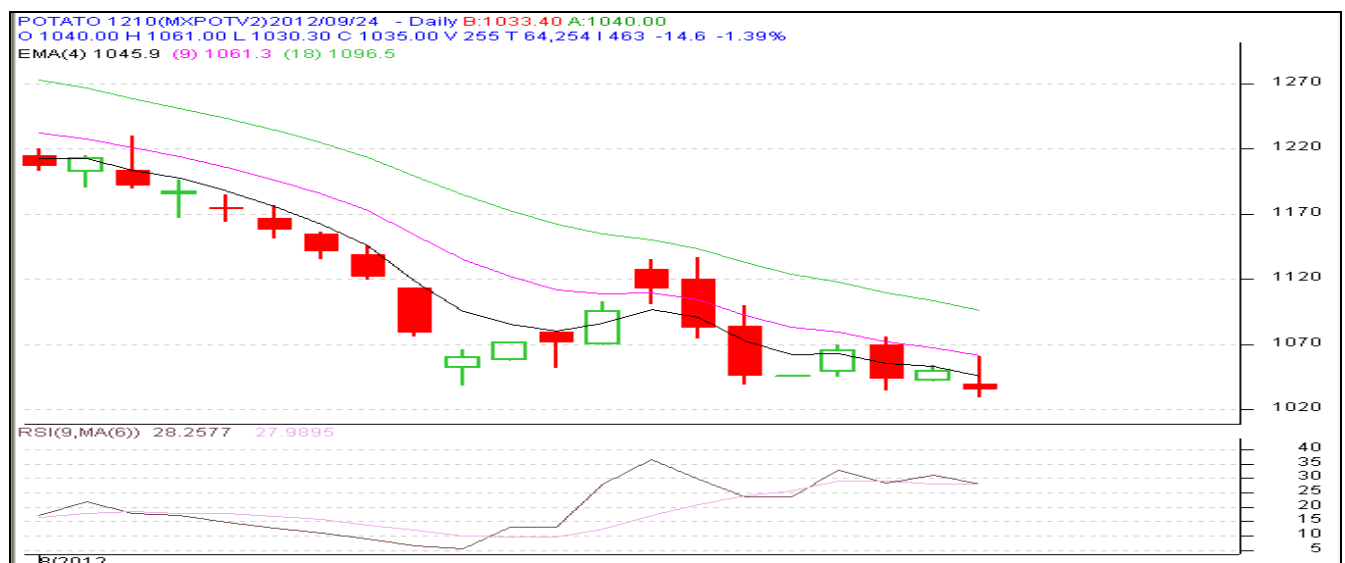


Potato Futures Prices at MCX as on 24th September 2012

| Symbol | Exchange | Expiry Date | Today's Close Price | Previous Close Price | Net Change | Today's Open Interest | Previous Day Open Interest | Change |
|------------|----------|-------------|---------------------|----------------------|------------|-----------------------|----------------------------|--------|
| POTATO | MCX | 15-Oct-12 | 1035 | 1049.6 | -14.60 | 13890 | 12450 | 1440 |
| POTATO | MCX | 15-Mar-13 | 737.3 | 743.4 | -6.10 | 9000 | 8880 | 120 |
| POTATO | MCX | 15-Apr-13 | 700.5 | 708.6 | -8.10 | 2850 | 2550 | 300 |
| POTATOTRWR | MCX | 15-Oct-12 | 938.9 | 975.9 | -37.00 | 8700 | 8070 | 630 |
| | | | | Total | | | | 2490 |

In the futures market, short buildup was seen as prices in all contracts were falling and open interest has increased. It is seen that market participants are not clear about direction of prices. One day buying is seen and another day short build up is seen. It seems traders taking positions for very short-term and square off immediately if there is some profit.

Monthly Chart of MCX- Agra October Contract:



(Source: AGRIWATCH)

Potato futures are finding resistance of 1070 levels and support of 1020. If this level is broken prices could reach up to 1090 in a day or two. Prices are likely to consolidate in the range of Rs. 1030-1130 for some days before moving either side. Downward RSI is also indicating further bearishness in market in short term.

Potato Prices in major markets – Mandi vs. Retail as on 24th September 2012

| Centre Name | Variety | Min. Price (Rs/Qtl) | Max. Price (Rs/Qtl) | Modal Price (Rs/Qtl) | Arrival (MT.) | Retail Price (Rs/Qtl) |
|-------------|--------------|---------------------|---------------------|----------------------|---------------|-----------------------|
| ABOHAR | POTATO STORE | 1050 | 1220 | 1135 | 90 | 2000 |
| AGRA | POTATO STORE | 900 | 1000 | 950 | 180 | 1600 |
| AHMEDABAD | POTATO STORE | 950 | 1350 | 1150 | 261 | 1700 |
| BARAUT | POTATO STORE | 1300 | 1400 | 1350 | 12 | 1800 |
| CHANDIGARH | POTATO STORE | 900 | 1100 | 1000 | 70 | 1500 |
| CHENNAI | POTATO FRESH | 1800 | 2000 | 1900 | 200 | 2800 |
| DELHI | POTATO FRESH | 1812 | 2200 | 2010 | 419 | 2400 |
| GANGATOK | POTATO STORE | 1600 | 2000 | 1800 | 3 | 2400 |
| GUWAHATI | POTATO FRESH | 1520 | 1600 | 1560 | 25 | 2000 |
| GUWAHATI | POTATO STORE | 1350 | 1430 | 1400 | 120 | 1800 |
| JAIPUR | POTATO STORE | 1100 | 1200 | 1155 | 266 | 1700 |
| JAMMU | POTATO FRESH | 1500 | 1600 | 1550 | 27 | 2000 |
| JAMMU | POTATO STORE | 1100 | 1200 | 1150 | 45 | 1600 |
| LUCKNOW | POTATO STORE | 1150 | 1450 | 1325 | 36 | 1800 |
| MUMBAI | POTATO FRESH | 1100 | 1450 | 1300 | 2224 | 3000 |
| NAGPUR | POTATO STORE | 1125 | 1375 | 1250 | 310 | 1800 |
| NASIK | POTATO STORE | 1400 | 1600 | 1510 | 50 | 1800 |
| PATNA | POTATO STORE | 1100 | 1200 | 1150 | 90 | 1700 |
| RAIPUR | POTATO STORE | 1200 | 1400 | 1300 | 35 | 2000 |
| RANCHI | POTATO STORE | 1000 | 1200 | 1180 | 220 | 1500 |
| SHIMLA | POTATO FRESH | 1300 | 1700 | 1500 | 23 | 2000 |
| TRIVANDRUM | POTATO FRESH | 1800 | 1900 | 1850 | 19 | 2600 |

(Source: NHB)

Disclaimer

The information contained in this document has been compiled by Agriwatch from sources believed to be reliable, such as NHB, Agmarknet, etc. and directly from traders in mandis. However, users of this data are requested to use the information with due caution and crosscheck with other sources. This document is not, and should not be construed as an offer to sell or buy any commodities. This document may not be reproduced, distributed or published without the express consent of SFAC