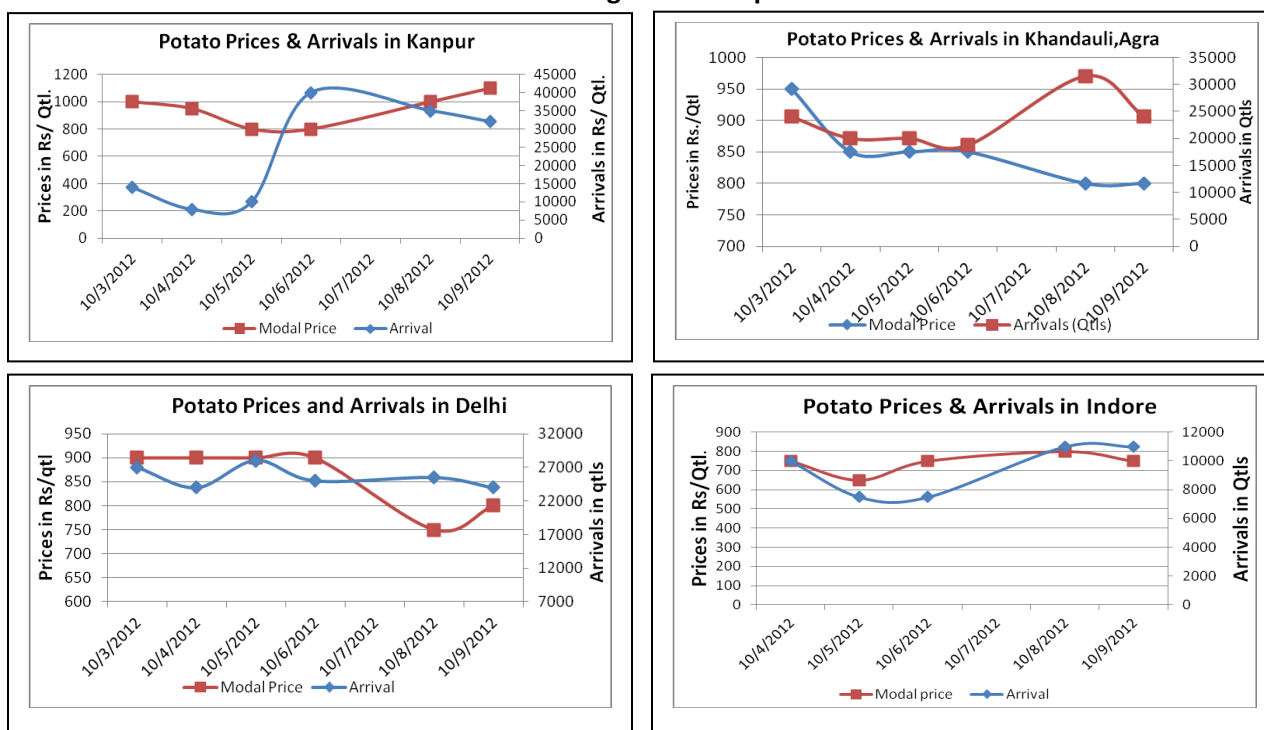


Potato Fundamentals:

- In West Bengal prices are stable from last one week and hovering between Rs1000- Rs 1100/ quintal. According to trade sources, prices may get affected in West Bengal because of low potato prices in U.P.
- According to trade sources in Hathras (U.P), approximately 40%- 45 % of total stored potatoes have been released. Prices are hovering between Rs 900- Rs 1050/ quintal and expected to fall down further in a couple of days.
- In West Bengal approximately 62% of onion has been released on 1st October as compared to last year's 52% at the same time.
- Potato future for Oct-Agra delivery is trading near 750 which are below its spot price of Rs. 800. This is due to lack buying interest in this contract as traders expect further weakness in spot prices.

Potato Prices & Arrivals in Producing & Consumption Centers



(Source: AGRWATCH)

Potato Prices & Arrivals in major Mandi as on 09/10/2012

Mandi	Ludhiana	Khandauli	Farrukhabad	Kanpur	Indore	Ahmedabad	Bangalore
Price (in Qtl)	400-700	800	800-1100	1000-1200	500-1000	800-1350	1000-1500
Arrivals (in Qtl)	3000	24000	15000	30000	11000	5500	8000

Potato Prices & Arrivals in major Mandi as on 08/10/2012

Mandi	Ludhiana	Khandauli	Farrukhabad	Kanpur	Indore	Ahmedabad	Bangalore
Price (in Qtl)	600-900	800	800-1100	800-1200	500-1100	800-1350	1400-1500
Arrivals (in Qtl)	2500	31500	15000	36000	11000	6000	12000

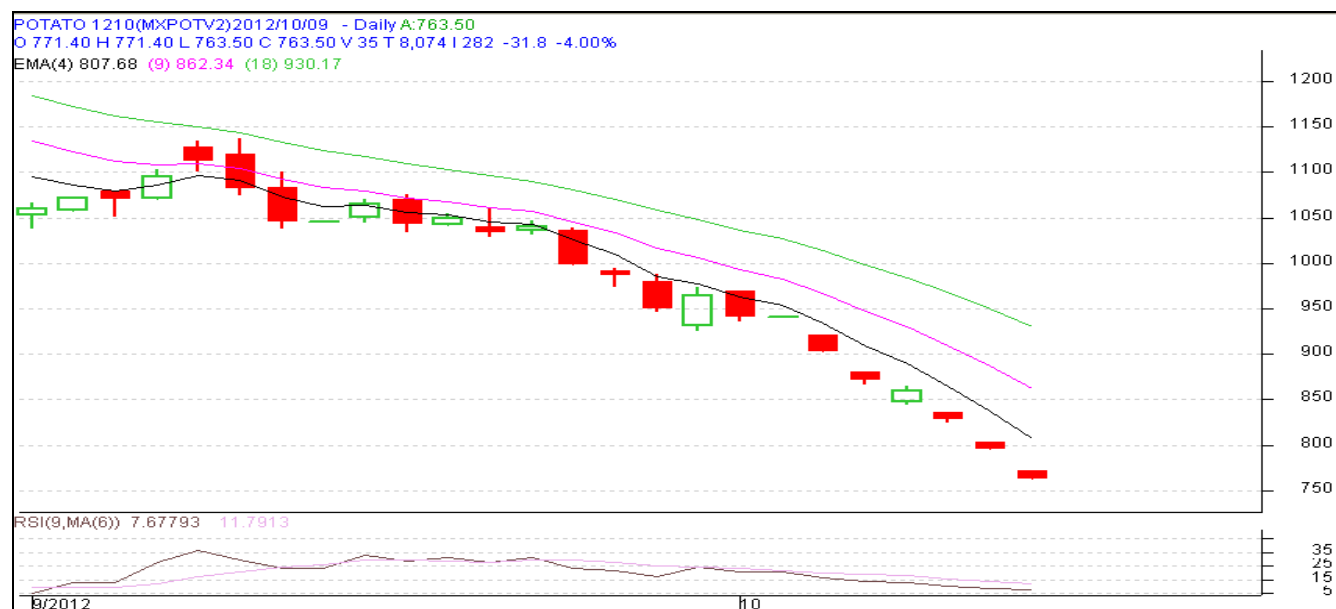
(Source: AGRWATCH)

Potato Futures Prices at MCX as on 9th October 2012

Symbol	Exchange	Expiry Date	Today's Close Price	Previous Close Price	Net Change	Today's Open Interest	Previous Day Open Interest	Change
POTATO	MCX	15-Oct-12	763.5	795.3	-31.8	8460	9510	-1050
POTATO	MCX	15-Mar-13	733	730.9	2.1	13260	13050	210
POTATO	MCX	15-Apr-13	703	699.1	3.9	5610	5520	90
POTATOTRWR	MCX	15-Oct-12	905	910	-5	5700	6060	-360
				Total				-1110

In the futures market, some short covering is seen in March & April contract with increase in price and open interest. In Oct contract, it seems market participants are exiting from their buy positions created earlier in anticipation of price rise. In this contract, both price and open interest are falling on daily basis. Prices have come below its spot price in Agra which is trading near Rs. 800.

Monthly Chart of MCX- Agra October Contract:



(Source: AGRIWATCH)

Technical chart shows hardly any buying interest in Oct contract. There is continuous downward movement as buyers are exiting from their buy positions created earlier. Now future contract price is trading below its spot price. If spot prices stabilize at current level of Rs. 800 then we could see some short-covering which could provide support to prices.



SFAC
 लघु कृषक
 कृषि व्यापार संघ

Small Farmers'
 Agribusiness
 Consortium



AGRIWATCH

Potato Prices in major markets – Mandi vs. Retail as on 8th October 2012

Centre Name	Variety	Min. Price (Rs/Qtl)	Max. Price (Rs/Qtl)	Modal Price (Rs/Qtl)	Arrival (MT.)	Retail Price (Rs/Qtl)
ABOHAR	POTATO STORE	800	1000	900	106	1800
AHMEDABAD	POTATO STORE	800	1350	1050	227	1600
BANGALORE	POTATO FRESH	1200	1400	1300	720	1800
BARAUT	POTATO STORE	1400	1500	1450	12	1900
BHOPAL	POTATO STORE	1150	1250	1200	160	1400
CHANDIGARH	POTATO STORE	900	1100	1000	75	1500
CHENNAI	POTATO FRESH	1600	1800	1700	220	2600
DELHI	POTATO FRESH	1150	1600	1375	1710	2200
DELHI	POTATO STORE	750	950	850	1710	1800
GANGATOK	POTATO STORE	1500	1700	1600	3.5	2100
GUWAHATI	POTATO FRESH	1700	1800	1750	32	2000
GUWAHATI	POTATO STORE	1350	1450	1400	150	1800
HYDERABAD	POTATO FRESH	1100	1500	1300	160	1700
JAIPUR	POTATO STORE	950	1050	1005	170	1500
JAMMU	POTATO FRESH	1700	1800	1750	12	2200
JAMMU	POTATO STORE	1200	1300	1250	36	1600
KOLKATA	POTATO STORE	1100	1120	1110	541	1300
MUMBAI	POTATO FRESH	900	1350	1200	928	2000
MUMBAI	POTATO STORE	1000	1400	1200	0	2400
NAGPUR	POTATO STORE	1125	1375	1250	280	1800
PATNA	POTATO STORE	1100	1250	1175	75	1800
PUNE	POTATO FRESH	1100	1400	1300	546	1600
RAIPUR	POTATO STORE	1200	1400	1300	32	2000
RANCHI	POTATO FRESH	1500	1680	1600	35	2400
RANCHI	POTATO STORE	1015	1080	1065	250	1400
SHIMLA	POTATO FRESH	1600	1800	1700	20	2500
SRINAGAR	POTATO FRESH	1100	1200	1150	70	1500
SRINAGAR	POTATO STORE	1200	1400	1300	90	2000
SURAT	POTATO STORE	1200	1300	1250	240	2000

(Source: NHB)

Disclaimer

The information contained in this document has been compiled by Agriwatch from sources believed to be reliable, such as NHB, Agmarknet, etc. and directly from traders in mandis. However, users of this data are requested to use the information with due caution and crosscheck with other sources. This document is not, and should not be construed as an offer to sell or buy any commodities. This document may not be reproduced, distributed or published without the express consent of SFAC