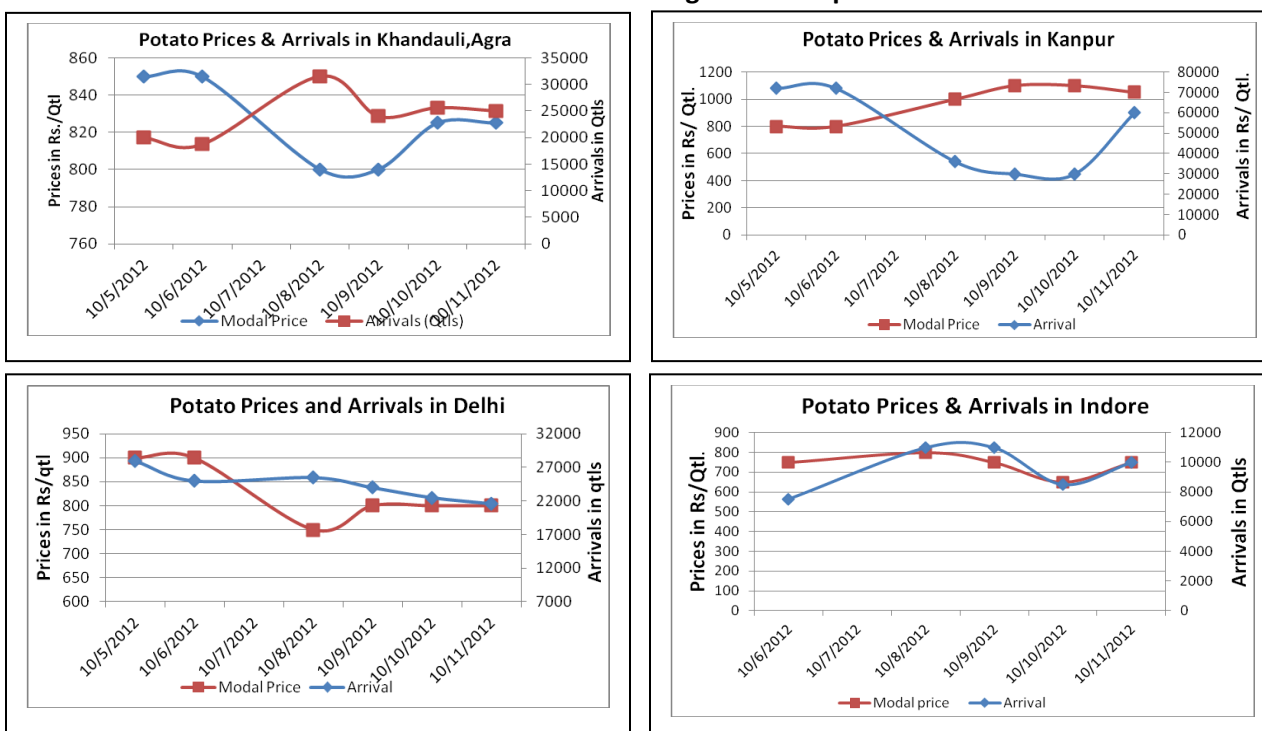


Potato Fundamentals:

- In U.P, Early Rabi crop sowing has started and Rabi sowing will be done after a couple of weeks. According to trade sources, early Rabi crop is harvested in month of December and January in Farrukhabad and Agra districts respectively.
- Arrivals have increased in all markets across the country and prices are stable because of higher stocks in the markets. In U.P and West Bengal approximately 35%-45% of potatoes are still stored in cold storages.
- In West Bengal, prices are hovering between Rs 1000-Rs 1100/ quintal and expected to decline as in U.P potato prices are low which may lead to affect prices in West Bengal.
- In all the parts of U.P, sowing of early rabi is expected to be continued till mid of October. Prices are hovering in the range of Rs 800- Rs 900/ quintal and likely to fall further.

Potato Prices & Arrivals in Producing & Consumption Centers



(Source: AGRIWATCH)

Potato Prices & Arrivals in major Mandi as on 11/10/2012

Mandi	Ludhiana	Khandauli	Farrukhabad	Kanpur	Indore	Ahmedabad	Bangalore
Price (in Qtl)	500-700	800-850	900-1200	1000-1100	500-1000	800-1310	1000-1500
Arrivals (in Qtl)	1500	25000	10000	60000	10000	4178	7500

Potato Prices & Arrivals in major Mandi as on 10/10/2012

Mandi	Ludhiana	Khandauli	Farrukhabad	Kanpur	Indore	Ahmedabad	Bangalore
Price (in Qtl)	400-800	800-850	800-1200	1000-1200	300-1000	850-1350	1000-1400
Arrivals (in Qtl)	2000	25600	9000	30000	8500	4000	6000

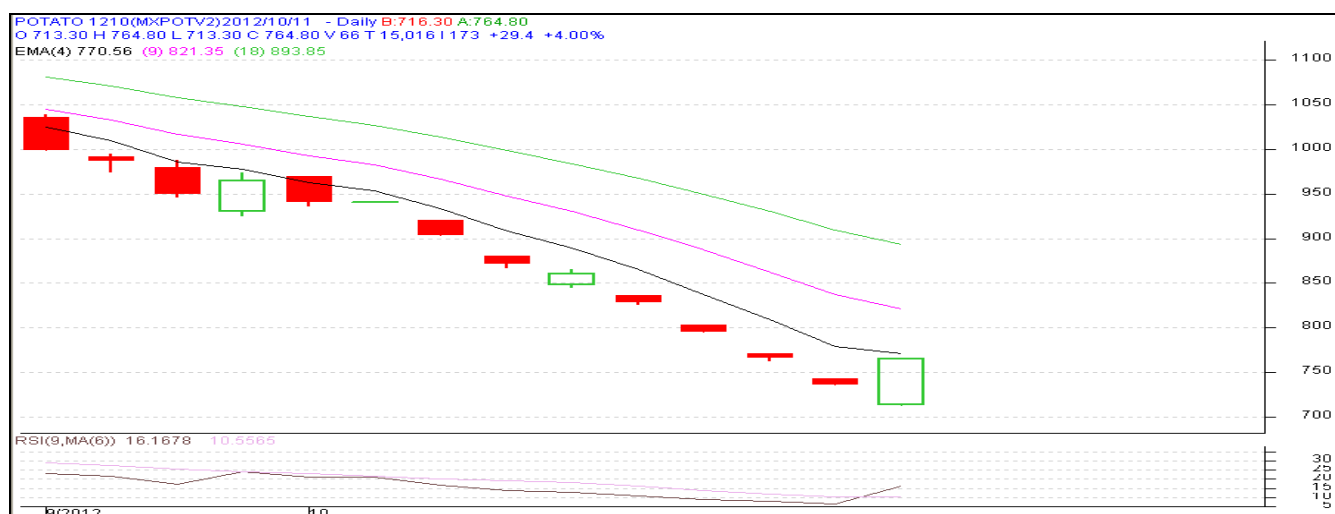
(Source: AGRIWATCH)

Potato Futures Prices at MCX as on 11th October 2012

Symbol	Exchange	Expiry Date	Today's Close Price	Previous Close Price	Net Change	Today's Open Interest	Previous Day Open Interest	Change
POTATO	MCX	15-Oct-12	764.8	735.4	29.40	5190	7170	-1980
POTATO	MCX	15-Mar-13	733.9	723	10.90	13680	13170	510
POTATO	MCX	15-Apr-13	696.8	693.1	3.70	6990	6270	720
POTATOTRWR	MCX	15-Oct-12	885	891.1	-6.1	3450	4350	-900
				Total				-1650

In the futures market, some long build up is seen in, March & April contract with increase in price and open interest. Today, in Oct contract buying was seen as prices are trading below its spot price in Agra. Market participants have booked profit from their short-term short positions created earlier.

Monthly Chart of MCX- Agra October Contract:



(Source: AGRWATCH)

The above technical chart shows that in today's market participant showed interest in short term buying as prices are hovering under spot price. However, Prices are still below 4-day Exponential moving average which indicates bearishness. Prices could find some resistance near 750 level.



SFAC
लघु कृषक
कृषि व्यापार संघ

Small Farmers'
Agribusiness
Consortium



AGRIWATCH

Potato Prices in major markets – Mandi vs. Retail as on 11th October 2012

Centre Name	Variety	Min. Price (Rs/Qtl)	Max. Price (Rs/Qtl)	Modal Price (Rs/Qtl)	Arrival (MT.)	Retail Price (Rs/Qtl)
ABOHAR	POTATO STORE	840	1150	995	98	2000
AGRA	POTATO STORE	830	1050	940	170	1400
AHMEDABAD	POTATO STORE	800	1350	1050	187	1600
AMRITSAR	POTATO STORE	700	800	750	25	1200
BANGALORE	POTATO FRESH	1200	1400	1300	630	2000
BARAUT	POTATO STORE	1400	1500	1450	12	1900
BHOPAL	POTATO STORE	1100	1300	1200	120	1400
CHANDIGARH	POTATO STORE	750	875	813	80	1500
CHENNAI	POTATO FRESH	1600	1800	1700	220	2600
DELHI	POTATO FRESH	1150	1600	1375	1038	2200
GUWAHATI	POTATO FRESH	1600	1800	1700	35	2000
GUWAHATI	POTATO STORE	1400	1500	1450	150	1800
HYDERABAD	POTATO FRESH	1000	1500	1300	186	1700
JAMMU	POTATO STORE	1000	1300	1200	45	1600
KOLKATA	POTATO STORE	1090	1110	1100	549	1300
LUCKNOW	POTATO STORE	1000	1350	1200	70	1600
MUMBAI	POTATO FRESH	900	1300	1200	1408	1800
PATNA	POTATO STORE	1000	1100	1050	105	1700
PUNE	POTATO FRESH	1000	1400	1200	664	1600
RAIPUR	POTATO STORE	1200	1350	1300	37	2000
RANCHI	POTATO FRESH	1400	1600	1500	30	2400
RANCHI	POTATO STORE	1060	1100	1070	230	1400
SHIMLA	POTATO FRESH	1600	1800	1700	20	2500
SRINAGAR	POTATO FRESH	1000	1150	1100	60	1500
SRINAGAR	POTATO STORE	1100	1300	1200	110	1800
SURAT	POTATO STORE	1200	1300	1250	240	2000
TRIVANDRUM	POTATO FRESH	2000	2400	2200	18	2800

(Source: NHB)

Disclaimer

The information contained in this document has been compiled by Agriwatch from sources believed to be reliable, such as NHB, Agmarknet, etc. and directly from traders in mandis. However, users of this data are requested to use the information with due caution and crosscheck with other sources. This document is not, and should not be construed as an offer to sell or buy any commodities. This document may not be reproduced, distributed or published without the express consent of SFAC