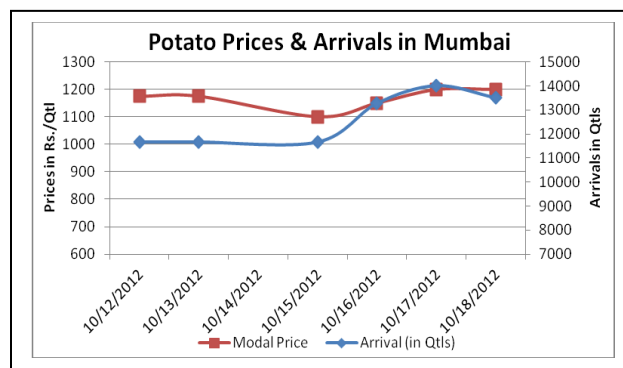
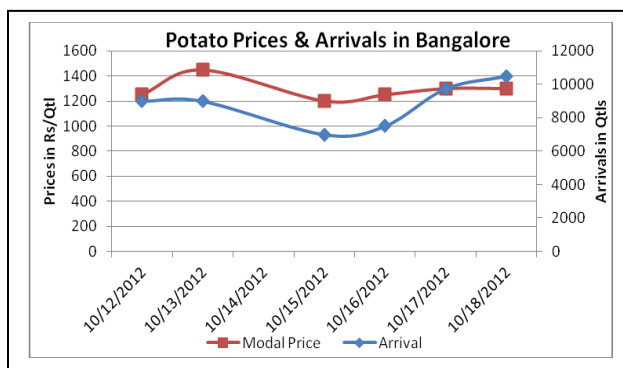
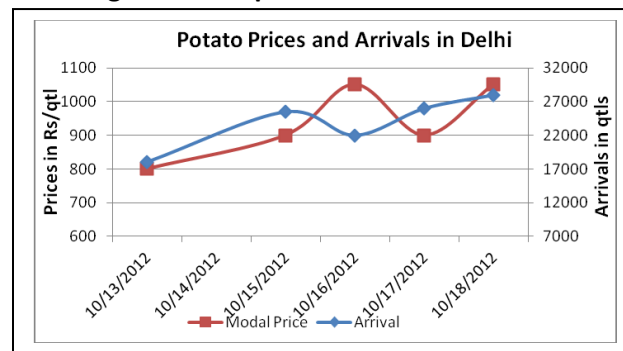
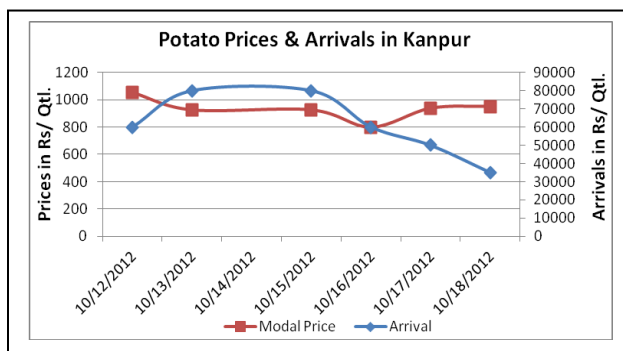


Potato Fundamentals:

- In Hathras, early Rabi sowing is completed by approximately 5- 10%. According to trade sources, potato area is expected to decrease by 40% as compared to previous year's area due to low prices this year and uncertainties and complexities in potato crop.
- In Kanpur, approximately 30-35% of total stored potatoes are left in cold storages. According to trade sources, releases from cold storage have increased as farmers are expecting a downfall in future due to higher stock than consumption.
- Across the country, prices of fresh potatoes are hovering in the range of Rs 1500 to Rs 2600/ quintal. Maximum prices were seen in Chennai at Rs 2600/ quintal followed by Guwahati, Jammu and Shimla each at Rs 2000/ quintal.
- In Tarkeshwar and Burdwan, prices of potatoes are hovering in the range of Rs 1000- Rs1100/ quintal from last few weeks. According to traders, prices are expected to remain stable or may fall down due to low prices of potatoes in U.P.

Potato Prices & Arrivals in Producing & Consumption Centers



(Source: AGRIWATCH)

Potato Prices & Arrivals in major Mandi as on 18/10/2012

Mandi	Ludhiana	Khandauli	Farrukhabad	Kanpur	Indore	Ahmedabad	Bangalore
Price (in Qtl)	600-800	800-850	700-1000	800-1100	500-1000	750-1400	1100-1500
Arrivals (in Qtl)	1500	90000	10000	35000	14000	4000	10500

Potato Prices & Arrivals in major Mandi as on 17/10/2012

Mandi	Ludhiana	Khandauli	Farrukhabad	Kanpur	Indore	Ahmedabad	Bangalore
Price (in Qtl)	400-800	800	700-1000	875-1000	500-1000	800-1250	1000-1600
Arrivals (in Qtl)	1500	100000	10000	50000	12500	4000	6750

(Source: AGRIWATCH)



SFAC
लघु कृषक
कृषि व्यवहार संघ

Small Farmers'
Agribusiness
Consortium



AGRIWATCH

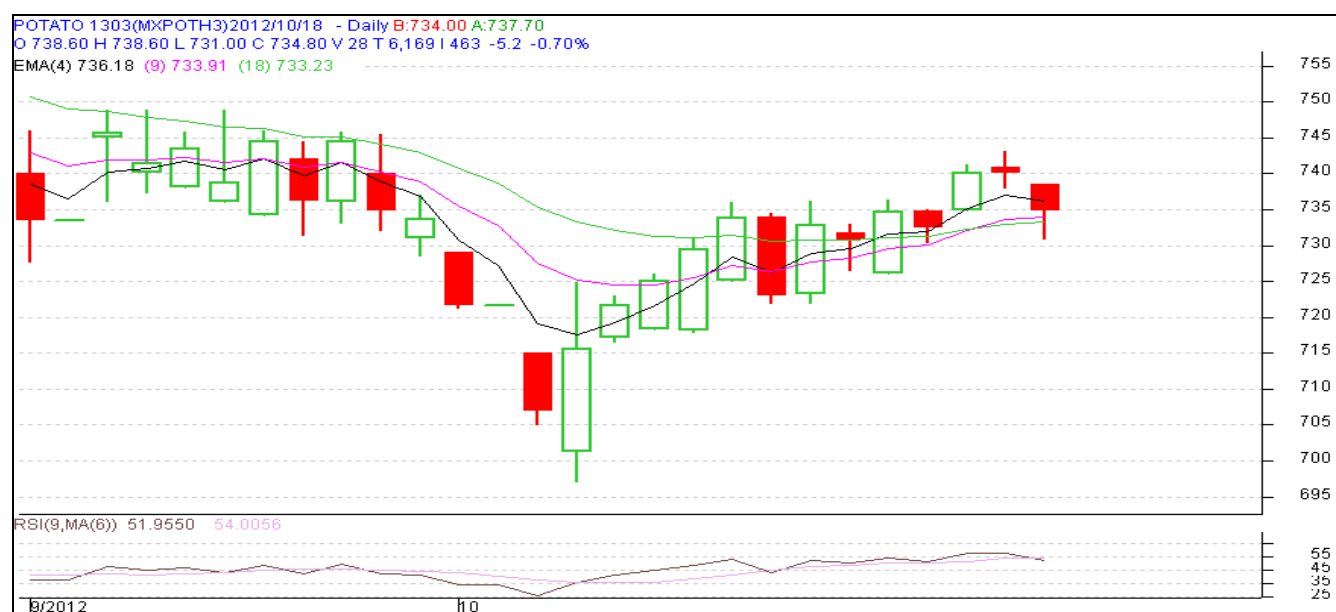
Potato Futures Prices at MCX as on 18th October 2012

Symbol	Exchange	Expiry Date	Today's Close Price	Previous Close Price	Net Change	Today's Open Interest	Previous Day Open Interest	Change
POTATO	MCX	15-Mar-13	734.8	739.1	-4.30	13890	14070	-180
POTATO	MCX	15-Apr-13	707.2	705.2	2.00	8370	8100	270
POTATO	MCX	15-May-12	734.5	731.9	2.60	1110	180	930
				Total				90

(Source: MCX)

In April and May contracts some long buildup is seen with increase in both open interest and prices. In March contract. In March contract it seems market participants are exiting from their buy positions created earlier.

Monthly Chart of MCX- Agra March Contract:



(Source: AGRIWATCH)

The above chart depicts the daily price movement in March futures contract for Agra delivery on MCX Platform. Prices have started to improve through short covering in the market as prices are continuously increasing. On higher side resistance could be seen at 745-50 levels. Immediate support for the contract is near 735.

Potato Prices in major markets – Mandi vs. Retail as on 18th October 2012

Centre Name	Variety	Min. Price (Rs/Qtl)	Max. Price (Rs/Qtl)	Modal Price (Rs/Qtl)	Arrival (MT.)	Retail Price (Rs/Qtl)
ABOHAR	POTATO STORE	850	1050	950	110	1800
AGRA	POTATO STORE	800	950	875	175	1400
AHMEDABAD	POTATO STORE	800	1250	1025	192	1700
AMRITSAR	POTATO STORE	660	740	700	29	1200
BHOPAL	POTATO STORE	750	850	800	164	900
BHUBANESHWAR	POTATO STORE	1000	1100	1050	500	1350
CHANDIGARH	POTATO STORE	1125	1175	1150	75	2000
CHENNAI	POTATO FRESH	1600	1800	1700	220	2600
GANGATOK	POTATO STORE	1300	1500	1400	3	1900
GUWAHATI	POTATO FRESH	1500	1600	1550	45	2000
GUWAHATI	POTATO STORE	1300	1400	1350	140	1800
JAMMU	POTATO FRESH	1500	1600	1550	9	2000
JAMMU	POTATO STORE	1100	1200	1150	54	1600
LUCKNOW	POTATO STORE	1000	1200	1100	75	1600
MUMBAI	POTATO FRESH	900	1250	1100	1120	1800
PATNA	POTATO STORE	1000	1100	1050	55	1700
PUNE	POTATO FRESH	1100	1300	1200	1240	1500
RAIPUR	POTATO STORE	1200	1300	1250	32	1800
RANCHI	POTATO FRESH	1200	1585	1500	25	2000
RANCHI	POTATO STORE	1037	1100	1075	240	1400
SHIMLA	POTATO FRESH	1600	1800	1700	21	2000
SRINAGAR	POTATO FRESH	1100	1200	1150	50	1500
SRINAGAR	POTATO STORE	1200	1300	1230	110	1800
SURAT	POTATO STORE	1200	1300	1250	200	2000

(Source: NHB)

Disclaimer

The information contained in this document has been compiled by Agriwatch from sources believed to be reliable, such as NHB, Agmarknet, etc. and directly from traders in mandis. However, users of this data are requested to use the information with due caution and crosscheck with other sources. This document is not, and should not be construed as an offer to sell or buy any commodities. This document may not be reproduced, distributed or published without the express consent of SFAC