

## Potato Fundamentals:

- In Delhi, prices of potatoes increased by Rs100-Rs 150/ quintal in starting 2-3 days of 'Navratri' festival but again the market seems to be sluggish as prices have come down to previous prices and hovering in the range of Rs 800- Rs1000/ quintal.
- In Tarkeshwar and Bardwan release from cold storage has increased and prices have increased by Rs50-Rs100/ quintal because from tomorrow market will be closed for 4- days on the occasion of Durga Puja. So, wholesalers are stocking almost double to triple of normal arrival.
- In Bangalore, potato is mainly coming from Hassan and U.P which are contributing approximately 85% and 15% of the total arrival. According to trade sources, according to trade sources, potato from Hassan is already harvested by 70% and rest is expected to last till Diwali festival.

## Potato Prices & Arrivals in Producing & Consumption Centers



(Source: AGRIWATCH)

## Potato Prices & Arrivals in major Mandi as on 19/10/2012

Mandi	Ludhiana	Khandauli	Farrukhabad	Kanpur	Indore	Ahmedabad	Bangalore
Price (in Qtl)	600-800	800	700-1000	875-1025	500-1000	750-1400	1000-1600
Arrivals (in Qtl)	1500	95000	10000	30000	8000	3600	11250

## Potato Prices & Arrivals in major Mandi as on 18/10/2012

Mandi	Ludhiana	Khandauli	Farrukhabad	Kanpur	Indore	Ahmedabad	Bangalore
Price (in Qtl)	600-800	800-850	700-1000	800-1100	500-1000	750-1400	1100-1500
Arrivals (in Qtl)	1500	90000	10000	35000	14000	4000	10500

(Source: AGRIWATCH)

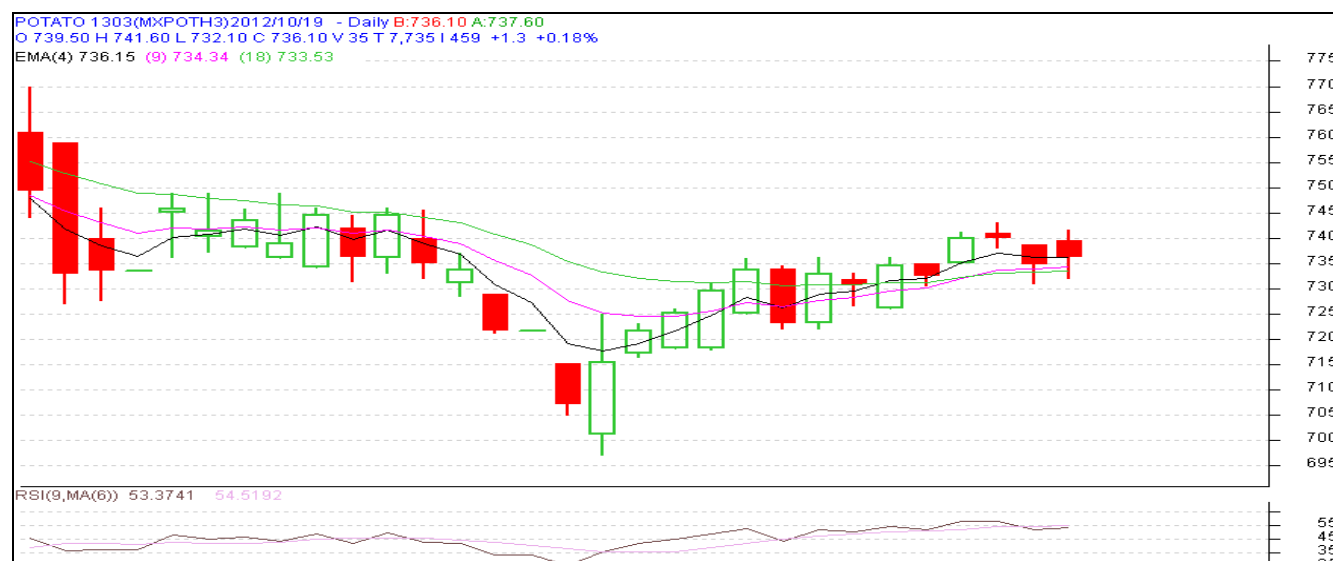
## Potato Futures Prices at MCX as on 19<sup>th</sup> October 2012

Symbol	Exchange	Expiry Date	Today's Close Price	Previous Close Price	Net Change	Today's Open Interest	Previous Day Open Interest	Change
POTATO	MCX	15-Mar-13	736.1	734.8	1.30	13770	13890	-120
POTATO	MCX	15-Apr-13	710	707.2	2.80	8550	8370	180
POTATO	MCX	15-May-12	740.5	734.5	6.00	1170	1110	60
				Total				120

(Source: MCX)

In April and May contracts some long buildup is seen with increase in both open interest and prices. In March contract short covering was seen.

## Monthly Chart of MCX- Agra March Contract:



(Source: AGRIWATCH)

The above chart depicts the daily price movement in March futures contract for Agra delivery on MCX Platform. Prices have started to improve through short covering in the market as prices are continuously increasing. On higher side resistance could be seen at 745-50 levels. Immediate support for the contract is near 730.

## Potato Prices in major markets – Mandi vs. Retail as on 19<sup>th</sup> October 2012

Centre Name	Variety	Min. Price (Rs/Qtl)	Max. Price (Rs/Qtl)	Modal Price (Rs/Qtl)	Arrival (MT.)	Retail Price (Rs/Qtl)
AGRA	POTATO STORE	750	850	800	193	1400
AHMEDABAD	POTATO STORE	750	1250	1000	234	1700
BHUBANESHWAR	POTATO STORE	1050	1100	1075	600	1350
CHENNAI	POTATO FRESH	1600	1800	1700	200	2600
GANGATOK	POTATO STORE	1200	1400	1300	3.5	2200
JAIPUR	POTATO STORE	900	1000	955	180	1500
JAMMU	POTATO FRESH	1600	1700	1650	9	2000
JAMMU	POTATO STORE	1200	1300	1250	36	1600
KOLKATA	POTATO STORE	1130	1140	1135	477	1400
LUCKNOW	POTATO STORE	900	1200	1050	82	1500
MUMBAI	POTATO FRESH	1000	1300	1200	1024	1800
PATNA	POTATO STORE	1000	1100	1050	60	1700
RAIPUR	POTATO STORE	1200	1300	1260	30	1800
RANCHI	POTATO FRESH	1200	1600	1350	27	2000
RANCHI	POTATO STORE	1060	1150	1100	260	1400
SHIMLA	POTATO FRESH	1700	1900	1800	20	2000
SRINAGAR	POTATO FRESH	1000	1200	1100	60	1500
SRINAGAR	POTATO STORE	1200	1400	1300	90	1800
SURAT	POTATO STORE	1200	1300	1250	210	2000
TRIVANDRUM	POTATO FRESH	2000	2500	2300	18	3000

(Source: NHB)

### Disclaimer

The information contained in this document has been compiled by Agriwatch from sources believed to be reliable, such as NHB, Agmarknet, etc. and directly from traders in mandis. However, users of this data are requested to use the information with due caution and crosscheck with other sources. This document is not, and should not be construed as an offer to sell or buy any commodities. This document may not be reproduced, distributed or published without the express consent of SFAC