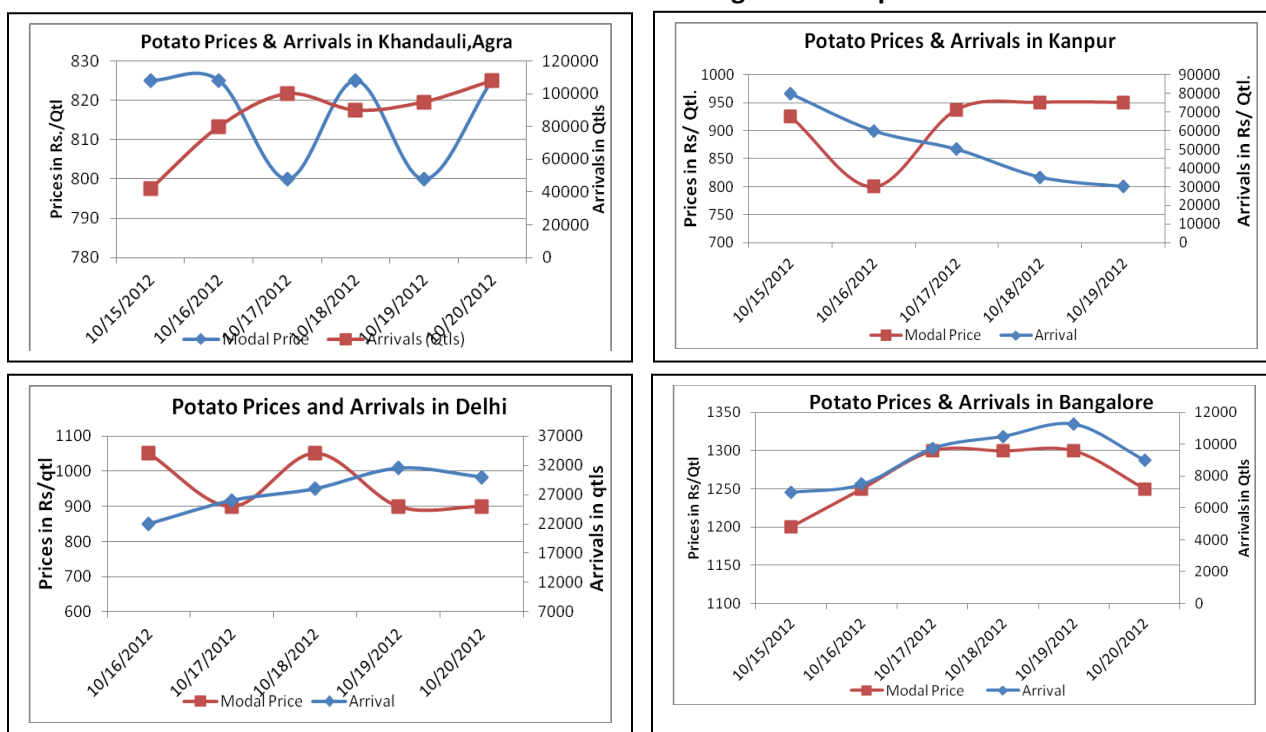


## Potato Fundamentals:

- In Agra sowing has started and is completed in 10-15% of total area. According to trade sources, approximately 20-25% of potato area may shift towards wheat and mustard because prices of potato are not stable whereas mustard can fetch high prices easily.
- In Indore, potato is coming from local cold storages only and is being consumed within the local region. Prices are hovering in the range of Rs 7-Rs 8 /kg and expected to remain stable throughout the season.
- In U.P and West Bengal, approximately 35%-45% of total stored potato is still left in cold storages. According to trade sources, higher release from cold stores has kept prices stable in market amid good demand.
- Across the country, stored potatoes prices are hovering in the range of Rs 1300- Rs2000/ quintal whereas fresh potatoes from A.P and Karnataka are in the range of Rs 1500-Rs 1600/ quintal.

## Potato Prices & Arrivals in Producing & Consumption Centers



(Source:

## AGRIWATCH) Potato Prices & Arrivals in major Mandi as on 20/10/2012

Mandi	Ludhiana	Khandauli	Farrukhabad	Kanpur	Indore	Ahmedabad	Bangalore
Price (in Qtl)	600-800	800-850	700-1000	900-1000	300-900	750-1250	1000-1500
Arrivals (in Qtl)	1500	108000	10000	26000	12500	2500	9000

## Potato Prices & Arrivals in major Mandi as on 19/10/2012

Mandi	Ludhiana	Khandauli	Farrukhabad	Kanpur	Indore	Ahmedabad	Bangalore
Price (in Qtl)	600-800	800	700-1000	875-1025	500-1000	750-1400	1000-1600
Arrivals (in Qtl)	1500	95000	10000	30000	8000	3600	11250

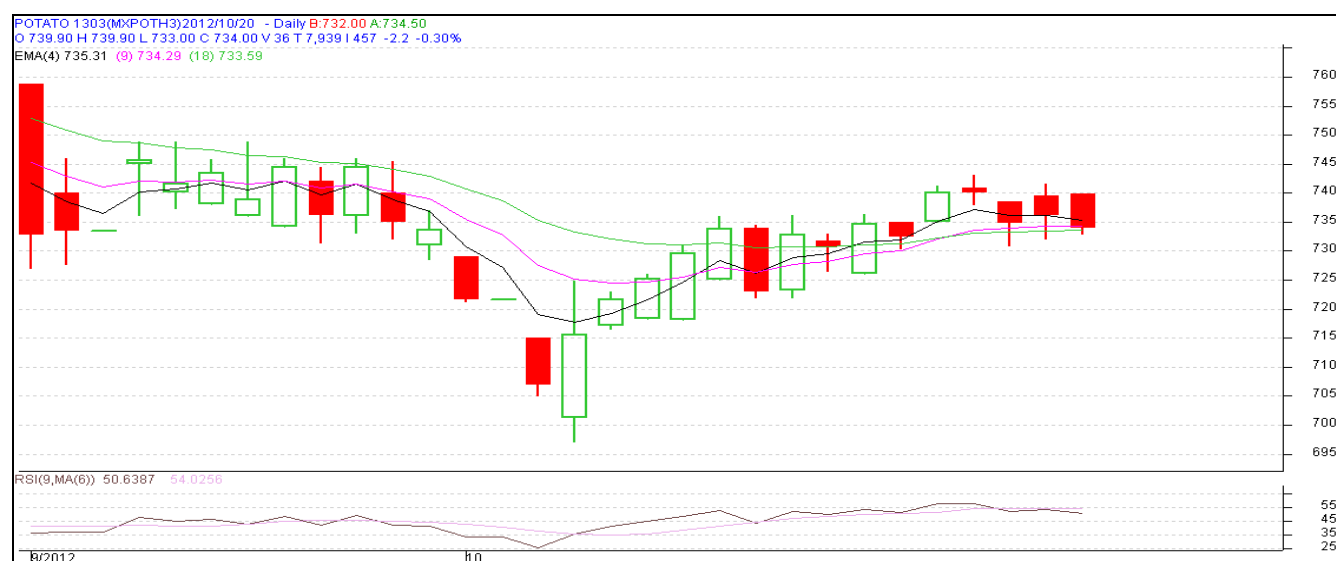
(Source: AGRIWATCH)

## Potato Futures Prices at MCX as on 20<sup>th</sup> October 2012

Symbol	Exchange	Expiry Date	Today's Close Price	Previous Close Price	Net Change	Today's Open Interest	Previous Day Open Interest	Change
POTATO	MCX	15-Mar-13	734	736.1	-2.10	13710	13770	-60
POTATO	MCX	15-Apr-13	706.9	710	-3.10	8580	8550	30
POTATO	MCX	15-May-12	733.1	740.5	-7.40	1200	1170	30
				Total				0

(Source: MCX)

## Monthly Chart of MCX- Agra March Contract:



(Source: AGRIWATCH)

The above chart depicts the daily price movement in March futures contract for Agra delivery on MCX Platform. Prices have started to improve through short covering in the market as prices are continuously increasing. On higher side resistance could be seen at 745-50 levels. Immediate support for the contract is near 730.

Potato Prices in major markets – Mandi vs. Retail as on 20<sup>th</sup> October 2012

Centre Name	Variety	Min. Price (Rs/Qtl)	Max. Price (Rs/Qtl)	Modal Price (Rs/Qtl)	Arrival (MT.)	Retail Price (Rs/Qtl)
AHMEDABAD	POTATO STORE	750	1250	1005	201	1700
BARAUT	POTATO STORE	1400	1500	1450	13	1900
BHUBANESHWAR	POTATO STORE	1080	1120	1100	500	1350
CHANDIGARH	POTATO STORE	750	1000	875	82	1500
CHENNAI	POTATO FRESH	1600	1800	1700	180	2600
DEHRADUN	POTATO FRESH	1600	1700	1650	50	2500
DEHRADUN	POTATO STORE	1212	1308	1282	33	2000
GANGATOK	POTATO STORE	1200	1300	1250	3	1900
GUWAHATI	POTATO FRESH	1500	1600	1550	45	2000
GUWAHATI	POTATO STORE	1300	1400	1350	140	1800
JAIPUR	POTATO STORE	950	1050	1005	220	1500
JAMMU	POTATO FRESH	1500	1700	1600	12	2000
JAMMU	POTATO STORE	1200	1400	1300	36	1600
PUNE	POTATO FRESH	1000	1300	1150	1270	1500
RANCHI	POTATO FRESH	1210	1600	1400	20	2000
RANCHI	POTATO STORE	1040	1180	1110	250	1400
SHIMLA	POTATO FRESH	1600	1800	1700	22	2000
SRINAGAR	POTATO FRESH	1000	1150	1100	50	1500
SRINAGAR	POTATO STORE	1200	1300	1250	110	1800
SURAT	POTATO STORE	1200	1400	1300	200	2000

(Source: NHB)

## Disclaimer

The information contained in this document has been compiled by Agriwatch from sources believed to be reliable, such as NHB, Agmarknet, etc. and directly from traders in mandis. However, users of this data are requested to use the information with due caution and crosscheck with other sources. This document is not, and should not be construed as an offer to sell or buy any commodities. This document may not be reproduced, distributed or published without the express consent of SFAC