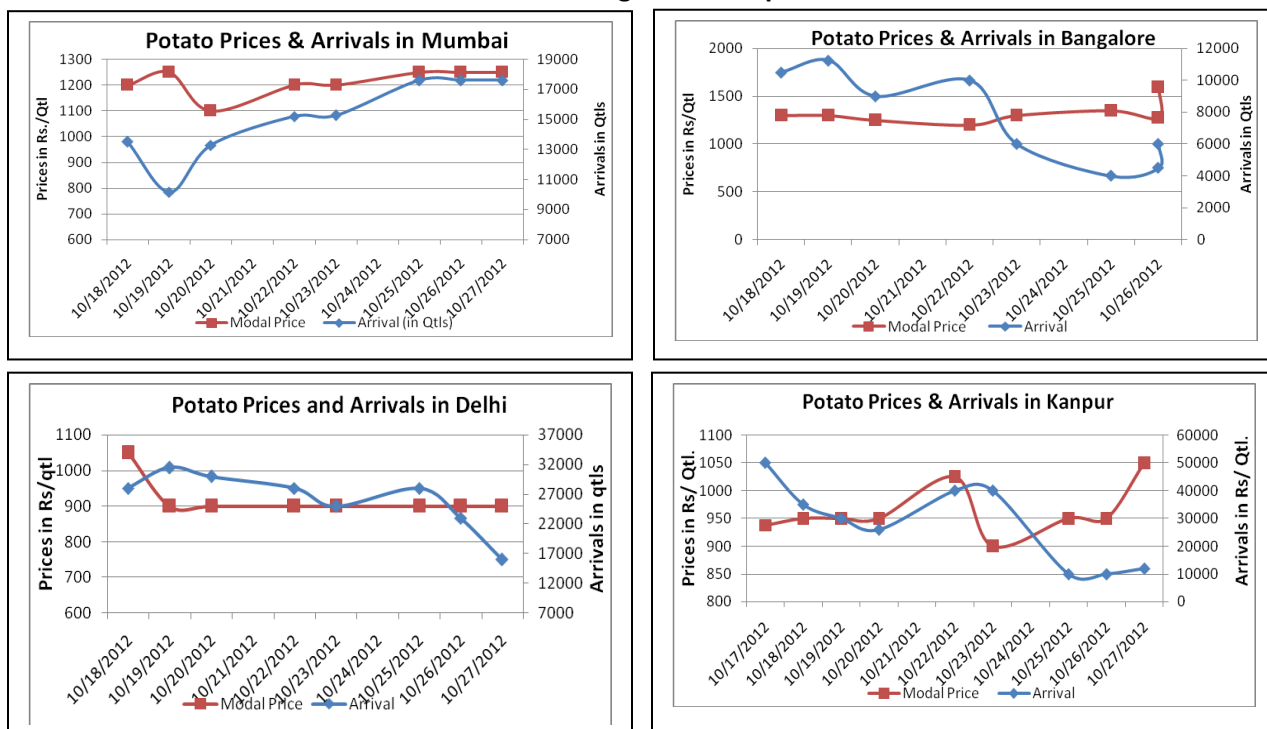


## Potato Fundamentals:

- Potato prices are stable in Delhi from last 3-4 days and ruling in the range of Rs. 800-1000/Qtl
- Fresh potato arrivals from Karnataka region is coming to an end. Arrivals have reduced to around 5000 qtl which were around 10000 qtl a week ago.
- Sowing is in full swing in UP region and expected to continue in this week also. Uttar Pradesh is the largest potato producer state in the country and mainly supplies "3797" variety.
- In Kanpur, prices have increased to Rs. 1000 level again. Earlier it had fallen up to Rs 900 due to higher release from cold stores.

## Potato Prices & Arrivals in Producing & Consumption Centers



(Source: AGRIWATCH)

## Potato Prices & Arrivals in major Mandi as on 27/10/2012

Mandi	Ludhiana	Khandauli	Farrukhabad	Kanpur	Indore	Ahmedabad	Bangalore
Price (in Qtl)	400-800	1000	900-1200	800-1000	Closed	800-1250	1500-1700
Arrivals (in Qtl)	2000	7500	12000	14000	Closed	2380	6000

## Potato Prices & Arrivals in major Mandi as on 26/10/2012

Mandi	Ludhiana	Khandauli	Farrukhabad	Kanpur	Indore	Ahmedabad	Bangalore
Price (in Qtl)	400-800	1000	900-1000	750-1000	500-1000	800-1250	1250-1300
Arrivals (in Qtl)	2000	7500	10000	21000	4500	2380	4500

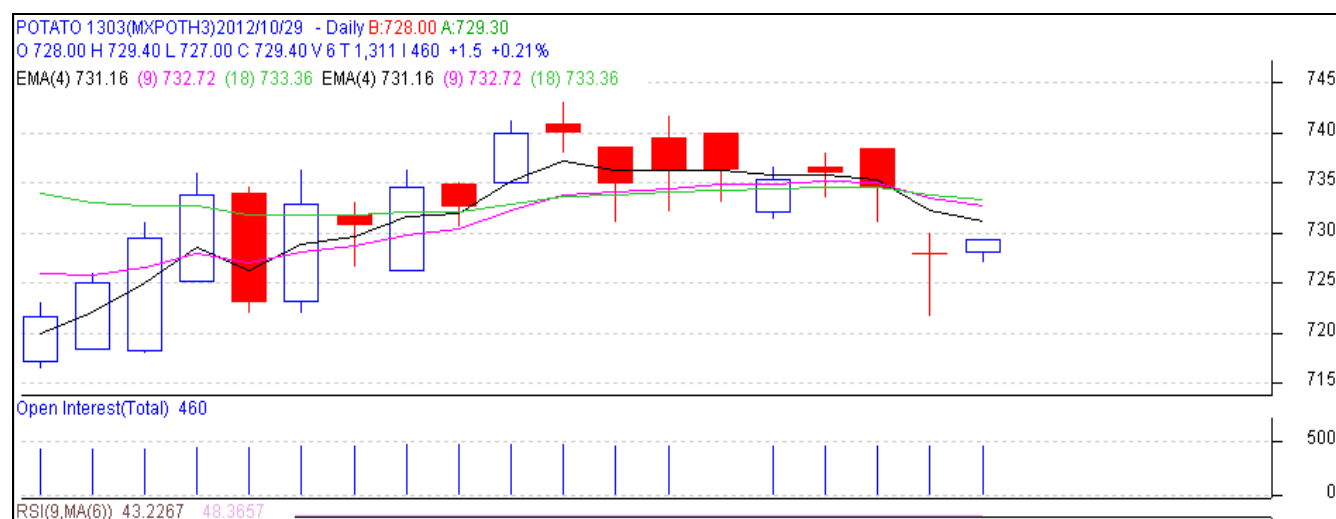
(Source: Agriwatch)

## MCX- Potato Futures Analysis: (as on 27<sup>th</sup> Oct 2012)

Symbol	Exchange	Expiry Date	Today's Close Price	Previous Close Price	Net Change	Today's Open Interest	Previous Day Open Interest	Change
POTATO	MCX	15-Mar-13	727.9	733.3	-5.40	13680	13920	-240
POTATO	MCX	15-Apr-13	700.1	703	-2.90	9210	8910	300
POTATO	MCX	15-May-12	729	731.9	-2.90	1380	1350	30
				Total				90

(Source: MCX)

## Daily Price Chart of MCX- Agra March Contract:



(Source: AGRIWATCH)

The above chart depicts the daily price movement in March futures contract for Agra delivery on MCX Platform. Prices are trading in very narrow range of Rs. 720-740, either side break out would decide further market direction. Prices are trading below its 4-day, 9-day and 18-day exponential moving average, suggesting weakness in market. On higher side resistance could be seen at 735 levels.

## Potato Prices in major markets – Mandi vs. Retail as on 26<sup>th</sup> October 2012

S.No.	Centre Name	Variety	Min Price (Rs/Qtl)	Max Price (Rs/Qtl)	Model Price (Rs/Qtl)	Arrival (MT.)	Retail Price (Rs/Qtl)
1	ABOHAR	POTATO STORE	820	1080	960	102	1800
2	AGRA	POTATO STORE	600	700	650	170	1000
3	AHMEDABAD	POTATO STORE	800	1250	1020	238	1600
4	BARAUT	POTATO STORE	1400	1500	1450	14	1800
5	BHUBANESHWAR	POTATO STORE	1100	1120	1110	600	1350
6	CHANDIGARH	POTATO STORE	875	1062	969	80	1500
7	CHENNAI	POTATO FRESH	1600	1800	1700	180	2400
8	DELHI	POTATO STORE	1375	1700	1545	1134	2200
10	GUWAHATI	POTATO FRESH	1500	1600	1550	35	1800
11	GUWAHATI	POTATO STORE	1200	1300	1250	130	1600
12	JAIPUR	POTATO STORE	900	1000	955	267	1500
13	JAMMU	POTATO FRESH	1400	1500	1450	8	1800
14	JAMMU	POTATO STORE	1000	1200	1100	54	1600
15	KOLKATA	POTATO STORE	1120	1140	1130	549	1400
16	LUCKNOW	POTATO STORE	850	1050	950	83	1300
17	PATNA	POTATO STORE	1000	1200	1100	30	1800
18	PUNE	POTATO FRESH	1000	1300	1200	916	1500
19	RAIPUR	POTATO STORE	1200	1300	1240	34	1800
20	RANCHI	POTATO FRESH	1240	1585	1460	55	2000
21	RANCHI	POTATO STORE	1022	1250	1150	240	1400
22	SHIMLA	POTATO FRESH	1400	1600	1500	22	2000
23	SRINAGAR	POTATO FRESH	1100	1200	1170	30	1500
24	SRINAGAR	POTATO STORE	1300	1400	1350	80	1800
25	SURAT	POTATO STORE	1200	1400	1300	240	2000

(Source: NHB)

### Disclaimer

The information contained in this document has been compiled by Agriwatch from sources believed to be reliable, such as NHB, Agmarknet, etc. and directly from traders in mandis. However, users of this data are requested to use the information with due caution and crosscheck with other sources. This document is not, and should not be construed as an offer to sell or buy any commodities. This document may not be reproduced, distributed or published without the express consent of SFAC