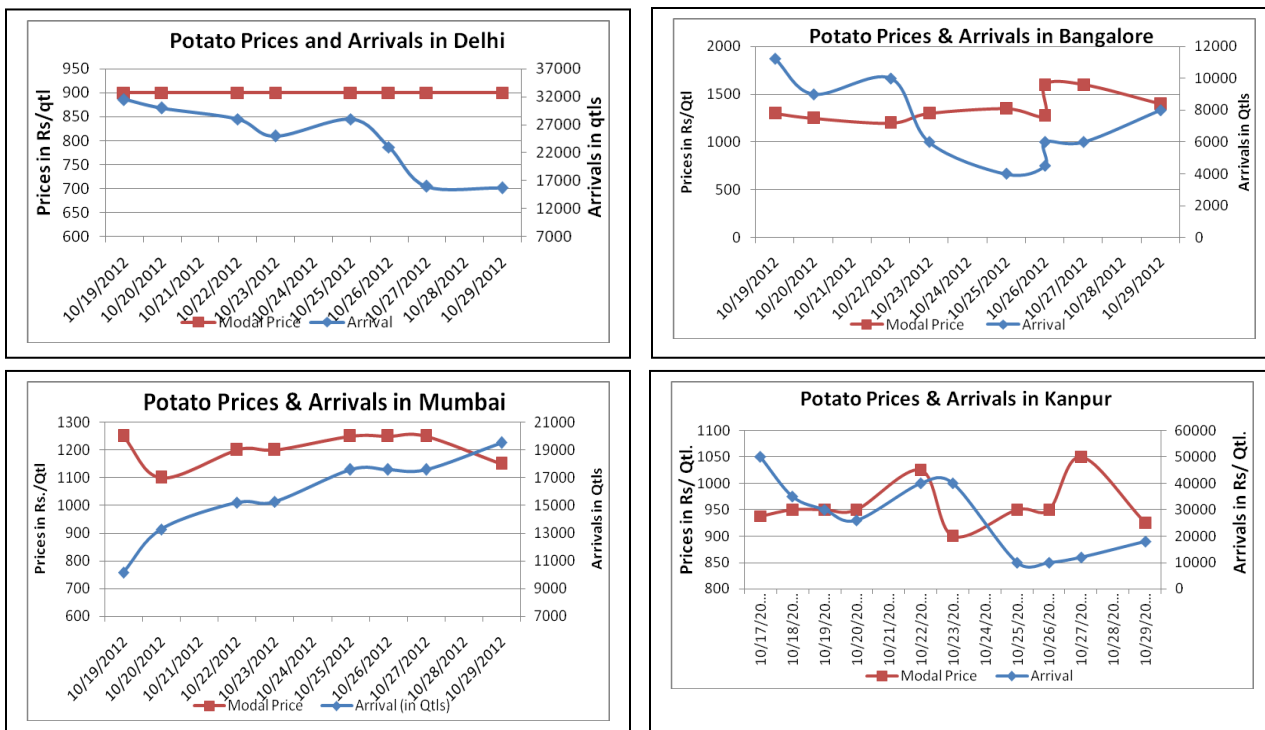


Potato Fundamentals:

- Sowing is in full swing in UP region and expected to continue in this week also. Uttar Pradesh is the largest potato producer state in the country and mainly supplies "3797" variety.
- Potato prices are stable in Delhi from last one week and ruling in the range of Rs. 800-1000/Qtl
- Fresh potato arrivals from Karnataka region is coming to an end. Arrivals have reduced to around 6000 qtl which were around 10000 qtl a week ago.
- In Ludhiana, prices have increased to Rs. 850 level due to lower arrivals in wholesale market. Earlier it was trading in the range of Rs. 400-800 from last few days.

Potato Prices & Arrivals in Producing & Consumption Centers



(Source: AGRIWATCH)

Potato Prices & Arrivals in major Mandi as on 29/10/2012

Mandi	Ludhiana	Khandauli	Farrukhabad	Kanpur	Indore	Ahmedabad	Bangalore
Price (in Qtl)	850-900	1100	900-1200	800-1050	500-1000	850-1250	1300-1500
Arrivals (in Qtl)	1000	7000	12000	18000	8000	2600	8000

Potato Prices & Arrivals in major Mandi as on 27/10/2012

Mandi	Ludhiana	Khandauli	Farrukhabad	Kanpur	Indore	Ahmedabad	Bangalore
Price (in Qtl)	400-800	1000	900-1200	800-1000	Closed	800-1250	1500-1700
Arrivals (in Qtl)	2000	7500	12000	14000	Closed	2380	6000

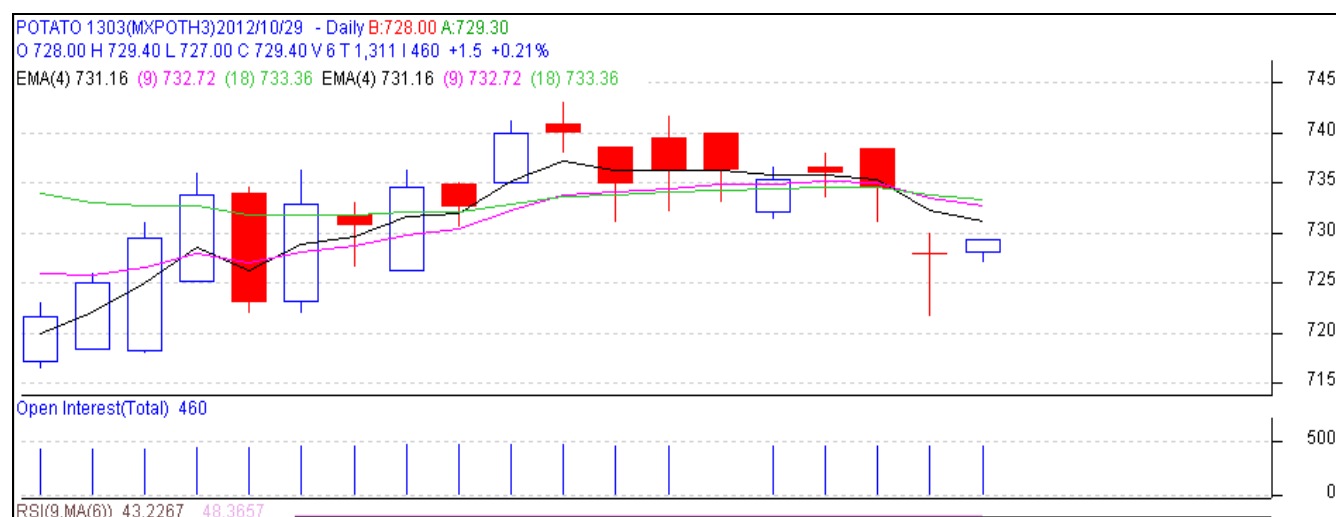
(Source: Agriwatch)

MCX- Potato Futures Analysis: (as on 29th Oct 2012)

Symbol	Exchange	Expiry Date	Today's Close Price	Previous Close Price	Net Change	Today's Open Interest	Previous Day Open Interest	Change
POTATO	MCX	15-Mar-13	731.2	727.9	3.30	13710	13680	30
POTATO	MCX	15-Apr-13	703.4	700.1	3.30	9120	9210	-90
POTATO	MCX	15-May-12	731.4	729	2.40	1620	1380	240
				Total				180

(Source: MCX)

Daily Price Chart of MCX- Agra March Contract:



(Source: AGRIWATCH)

The above chart depicts the daily price movement in March futures contract for Agra delivery on MCX Platform. Prices are trading in very narrow range of Rs. 720-740, either side break out would decide further market direction. Prices are trading below its 4-day, 9-day and 18-day exponential moving average, suggesting weakness in market. On higher side resistance could be seen at 735 levels.

Potato Prices in major markets – Mandi vs. Retail as on 29th October 2012

S.No.	Centre Name	Variety	Min Price (Rs/Qtl)	Max Price (Rs/Qtl)	Model Price (Rs/Qtl)	Arrival (MT.)	Retail Price (Rs/Qtl)
1	ABOHAR	POTATO STORE	760	980	870	92	1500
2	AGRA	POTATO STORE	700	800	750	150	1300
3	AHMEDABAD	POTATO STORE	850	1250	1050	260	1700
4	BARAUT	POTATO STORE	1500	1600	1550	13	2000
5	BHOPAL	POTATO STORE	800	900	850	120	1000
6	CHANDIGARH	POTATO STORE	1000	1250	1125	70	1800
7	CHENNAI	POTATO FRESH	1600	1800	1700	450	2200
8	DEHRADUN	POTATO FRESH	1425	1600	1550	52	2500
9	DEHRADUN	POTATO STORE	1150	1300	1230	37	2000
10	GANGATOK	POTATO STORE	1600	1800	1700	3	2300
11	GUWAHATI	POTATO FRESH	1500	1600	1560	38	1800
12	GUWAHATI	POTATO STORE	1250	1350	1300	140	1600
13	HYDERABAD	POTATO FRESH	700	1000	800	110	1300
14	JAMMU	POTATO FRESH	1200	1400	1300	18	1600
15	JAMMU	POTATO STORE	1000	1200	1100	36	1500
16	KOLKATA	POTATO STORE	1120	1140	1130	549	1400
17	LUCKNOW	POTATO STORE	900	1100	1000	70	1400
18	MUMBAI	POTATO FRESH	1000	1300	1200	1952	2000
19	MUMBAI	POTATO STORE	1300	1600	1500	0	2200
20	NAGPUR	POTATO STORE	1125	1375	1250	260	1600



SFAC
लघु कृषक
कृषि व्यापार संघ

Small Farmers'
Agribusiness
Consortium



AGRIWATCH

21	PATNA	POTATO STORE	1050	1200	1125	60	1800
22	PUNE	POTATO FRESH	1000	1400	1200	833	1600
23	RAIPUR	POTATO STORE	1200	1300	1250	31	1800
24	RANCHI	POTATO FRESH	1300	1500	1375	50	2000
25	RANCHI	POTATO STORE	1060	1250	1200	240	1400
26	SHIMLA	POTATO FRESH	1400	1600	1500	22	2000
27	SRINAGAR	POTATO FRESH	1150	1250	1200	20	1500
28	SRINAGAR	POTATO STORE	1350	1450	1400	60	1800
29	SURAT	POTATO STORE	1200	1300	1250	230	2000

(Source: NHB)

Disclaimer

The information contained in this document has been compiled by Agriwatch from sources believed to be reliable, such as NHB, Agmarknet, etc. and directly from traders in mandis. However, users of this data are requested to use the information with due caution and crosscheck with other sources. This document is not, and should not be construed as an offer to sell or buy any commodities. This document may not be reproduced, distributed or published without the express consent of SFAC



Small Farmers'
Agribusiness
Consortium



AGRIWATCH