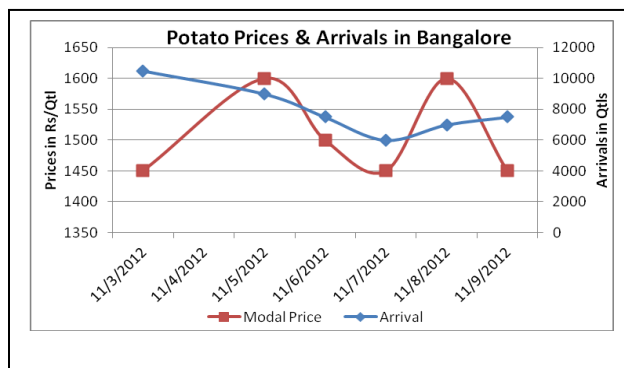
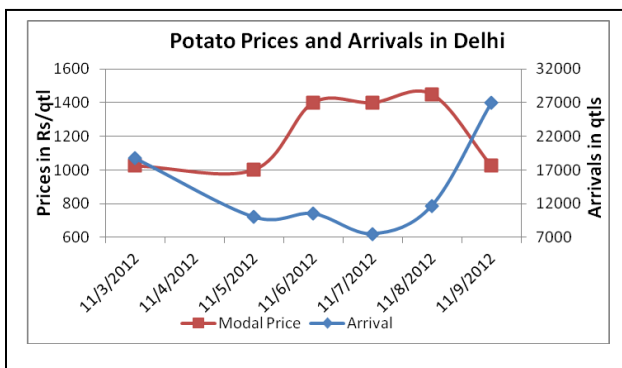
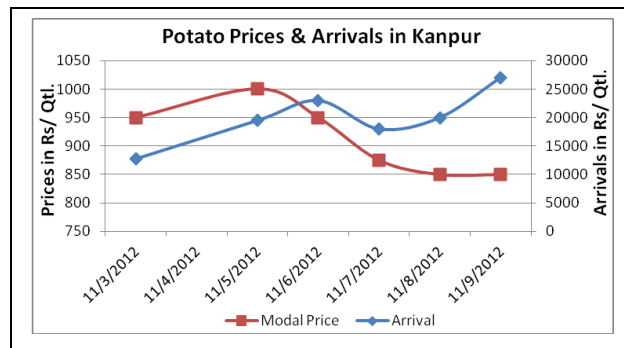
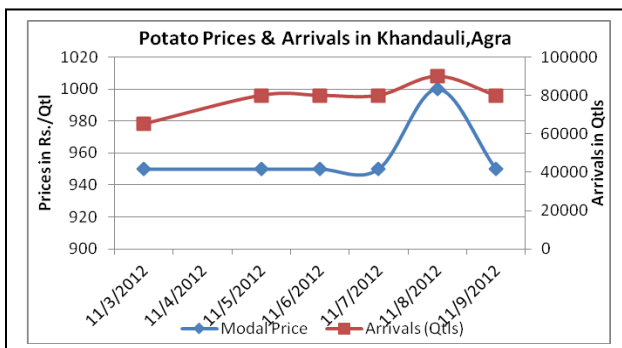


Potato Fundamentals:

- In the futures market, potato prices for March delivery is hovering near the support level of Rs. 725. If this level is broken, prices could fall up to Rs. 705-700 level.
- Sowing activity is full pace in UP and sowing in W Bengal is expected to gather pace after Diwali.
- Potato prices in Khandauli (Agra) regions are trading in the range of Rs. 900-1100 from last few days.
- Meanwhile in retail market, prices are hovering in the range of Rs 1000 to Rs 2500 / quintal. Maximum prices were seen in Chandigarh at Rs 2500 followed by Chennai at Rs 2400/ quintal and lowest prices were seen in Amritsar.

Potato Prices & Arrivals in Producing & Consumption Centers



(Source: AGRIWATCH)

Potato Prices & Arrivals in major Mandi as on 12/11/2012

Mandi	Ludhiana	Khandauli	Farrukhabad	Kanpur	Indore	Ahmedabad	Bangalore
Price (in Qtl)	300-1200	900-1100	800-1200	750-950	500-900	750-1375	1300-1500
Arrivals (in Qtl)	2000	40000	5000	20000	6000	7123	12000

Potato Prices & Arrivals in major Mandi as on 10/11/2012

Mandi	Ludhiana	Khandauli	Farrukhabad	Kanpur	Indore	Ahmedabad	Bangalore
Price (in Qtl)	300-1200	900-1100	800-1100	700-1000	300-800	800-1350	1400-1700
Arrivals (in Qtl)	3000	55000	4000	27000	10000	3000	7500

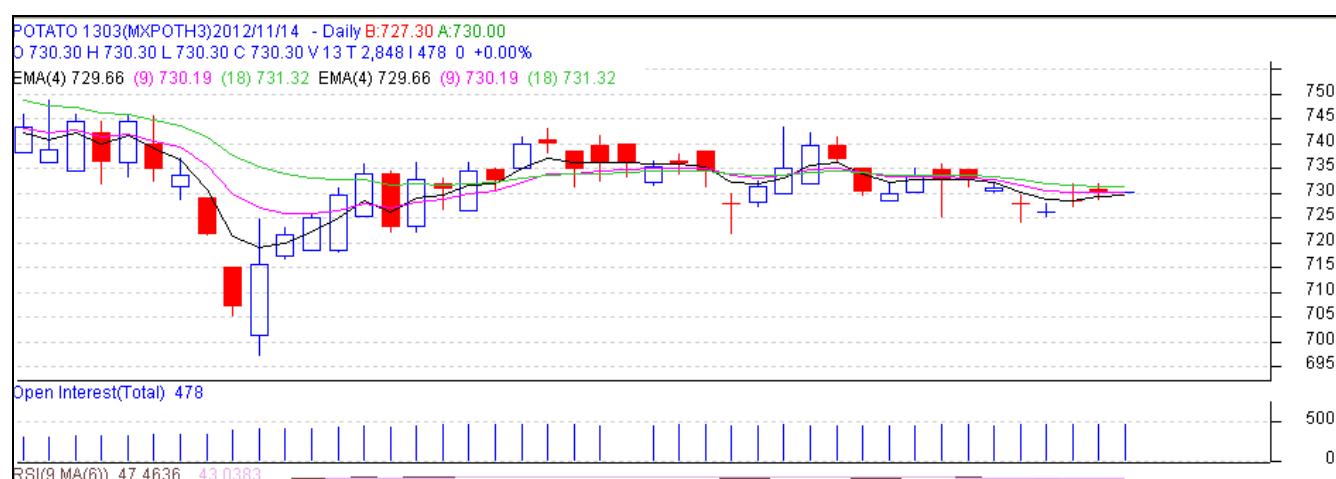
(Source: Agriwatch)

MCX- Potato Futures Analysis: (as on 13th Nov 2012)

Symbol	Exchange	Expiry Date	Today's Close Price	Previous Close Price	Net Change	Today's Open Interest	Previous Day Open Interest	Change
POTATO	MCX	15-Mar-13	730.3	726.3	4.00	14340	14280	60
POTATO	MCX	15-Apr-13	697.6	693.9	3.70	10170	10110	60
POTATO	MCX	15-May-12	722	719.3	2.70	2640	2610	30
				Total				150

(Source: MCX)

Daily Price Chart of MCX- Agra March Contract:



(Source: AGRIWATCH)

Potato futures prices are finding support near 725 level and expected to bounce from here if this level is not broken in near future. If the level of Rs. 725 is broken, there is likely chance that price could fall up to Rs. 705-700 level. Fundamental are also supportive to this as sowing is gathering pace in potato growing regions. On upside, there is strong resistance in the range of Rs. 735-40.

Potato Prices in major markets – Mandi vs. Retail as on 12th November 2012

S.No.	Centre Name	Min Price (Rs/Qtl)	Max Price (Rs/Qtl)	Avg Price (Rs/Qtl)	Arrivals (MT)	Retail Price (Rs/Qtl)
1	AGRA	900	1100	1000	90	1600
2	AHMEDABAD	800	1350	1050	227	1600
3	AMRITSAR	500	700	600	25	1200
4	BANGALORE	1300	1500	1400	540	1800
5	BARAUT	1300	1400	1350	14	1800
6	BHOPAL	1050	1150	1100	120	1300
7	CHANDIGARH	1062	1312	1187	30	2000
8	CHENNAI	1800	2000	1900	200	2400
9	GANGATOK	1200	1600	1400	5	1900
10	GUWAHATI	1400	1600	1500	50	2000
11	GUWAHATI	1100	1300	1200	170	1800
12	JAIPUR	1400	1500	1455	50	2500
13	JAIPUR	800	900	860	170	1400
14	JAMMU	1400	1500	1450	15	2000
15	JAMMU	1200	1400	1300	45	1600
16	KOLKATA	1200	1220	1210	495	1450
17	LUCKNOW	1100	1350	1225	60	1600
18	MUMBAI	1000	1300	1150	920	2000
19	MUMBAI	1400	1700	1600	0	2200
20	NAGPUR	1062	1250	1160	290	1800
21	PATNA	1000	1100	1050	45	1700
22	RAIPUR	1200	1300	1250	31	1800
23	RANCHI	900	1110	1095	118	1600
24	RANCHI	1010	1100	1065	215	1400
25	SHIMLA	1200	1400	1300	27	1700
26	SURAT	1100	1300	1200	240	2000

(Source: NHB)

Disclaimer

The information contained in this document has been compiled by Agriwatch from sources believed to be reliable, such as NHB, Agmarknet, etc. and directly from traders in mandis. However, users of this data are requested to use the information with due caution and crosscheck with other sources. This document is not, and should not be construed as an offer to sell or buy any commodities. This document may not be reproduced, distributed or published without the express consent of SFAC



SFAC
लघु कृषक
कृषि व्यापार संघ

Small Farmers'
Agribusiness
Consortium



AGRIWATCH