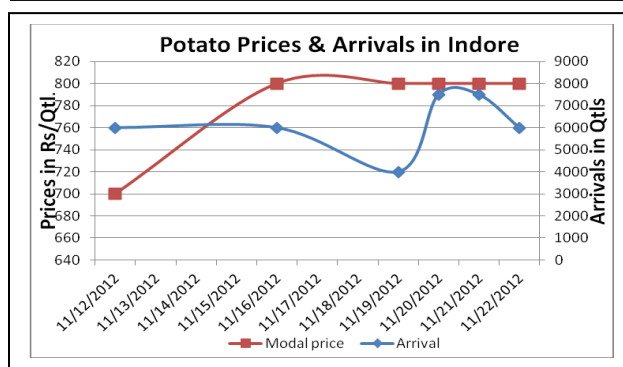
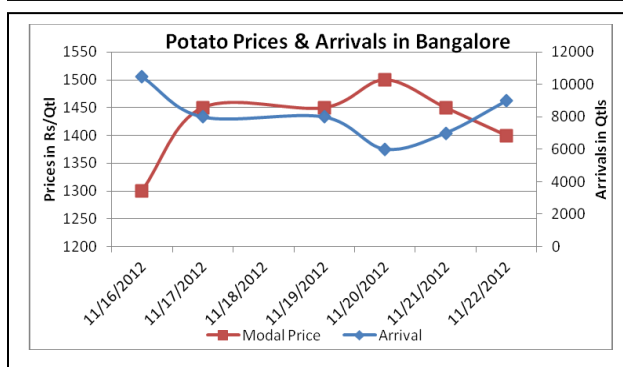
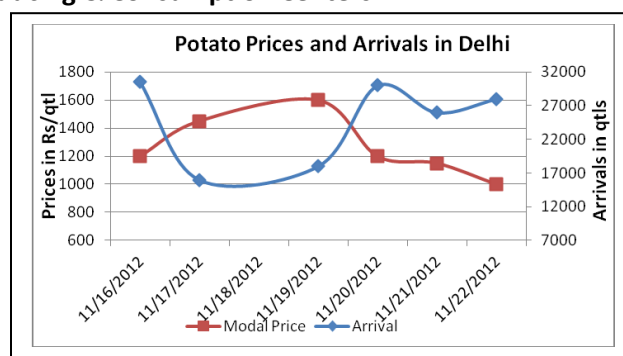
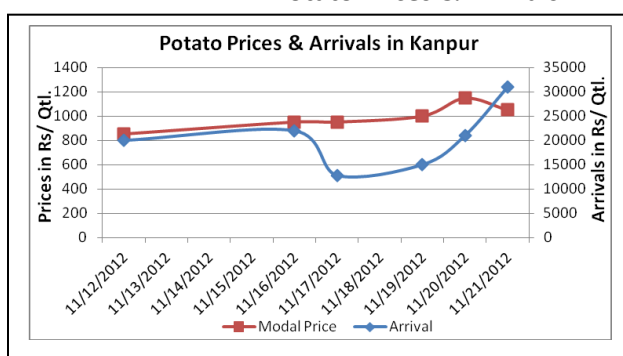


## Potato Fundamentals:

- In West Bengal, sowing has almost completed by 25-30%. Sowing this year is delayed because of unfavorable weather conditions. It's difficult to estimate the production of the tuber but it is expected to be almost similar like last year because of high prices this year.
- In Bangalore, average prices have almost fallen to 1400/ quintal from 1500/ quintal because of increase in arrivals in 3 days.
- In Delhi, potato prices are hovering in the range of Rs 1000 to Rs 1300/ quintal. Fresh potato from Punjab is fetching highest price of Rs 1300/ quintal.
- In Indore market, prices are stable and hovering in the range of Rs 600-Rs 1100/ quintal from last few days.

## Potato Prices & Arrivals in Producing & Consumption Centers



(Source: AGRIWATCH)

## Potato Prices & Arrivals in major Mandi as on 22/11/2012

Mandi	Ludhiana	Khandauli	Farrukhabad	Kanpur	Indore	Ahmedabad	Bangalore
Price (in Qtl)	500-1200	-	700-1000	800-1300	500-1100	750-1300	1300-1500
Arrivals (in Qtl)	3000	-	300	31000	6000	6667	9000

## Potato Prices & Arrivals in major Mandi as on 21/11/2012

Mandi	Ludhiana	Khandauli	Farrukhabad	Kanpur	Indore	Ahmedabad	Bangalore
Price (in Qtl)	500-1100	-	700-1000	900-1400	500-1100	750-1300	1400-1500
Arrivals (in Qtl)	2800	-	300	21000	7500	7455	7000

(Source: Agriwatch)

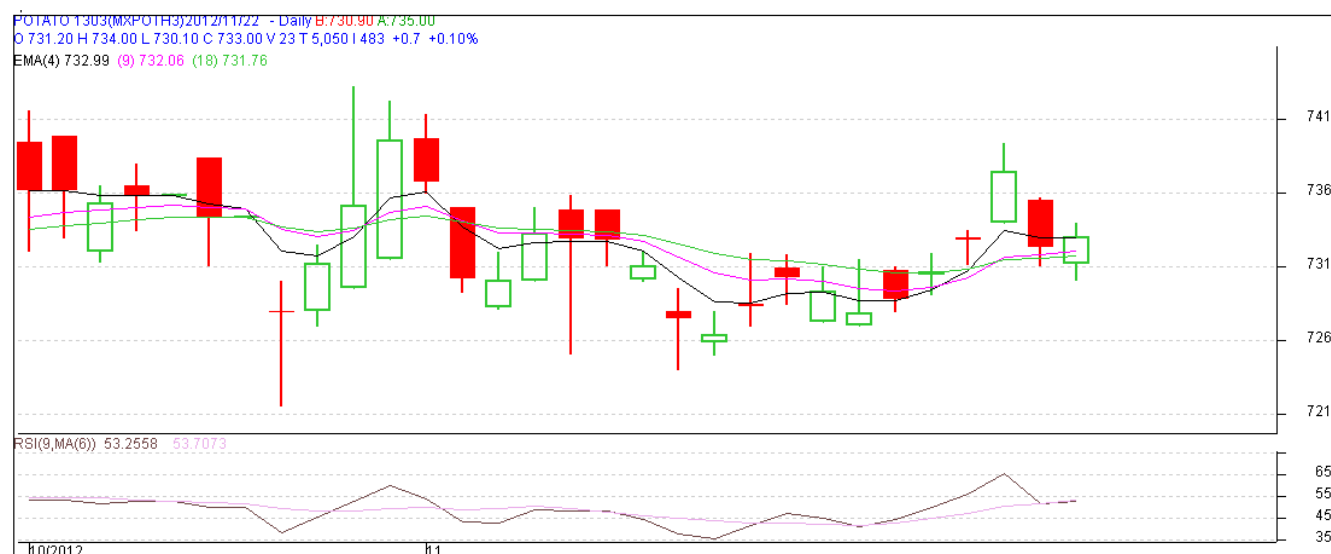
## MCX- Potato Futures Analysis: (as on 22<sup>nd</sup> Nov 2012)

Symbol	Exchange	Expiry Date	Today's Close Price	Previous Close Price	Net Change	Today's Open Interest	Previous Day Open Interest	Change
POTATO	MCX	15-Mar-13	733	732.3	0.70	14490	14520	-30
POTATO	MCX	15-Apr-13	703.2	702.5	0.70	10650	10620	30
POTATO	MCX	15-May-12	721.4	721.1	0.30	3720	3660	60
				Total				60

(Source: MCX)

In MCX March contract some short covering was seen with increase in prices and decline in open interest. In MCX April and May contract both prices and open interest have increased which suggest long build up in the market.

## Daily Price Chart of MCX- Agra March Contract:



(Source: AGRIWATCH)

## Potato Prices in major markets – Mandi vs. Retail as on 22<sup>nd</sup> November 2012

Centre Name	Variety	Min. Price (Rs/Qtl)	Max. Price (Rs/Qtl)	Modal Price (Rs/Qtl)	Arrival (MT.)	Retail Price (Rs/Qtl)
AGRA	POTATO STORE	900	1000	950	70	1500
AHMEDABAD	POTATO STORE	750	1300	1020	276	1600
AMRITSAR	POTATO STORE	600	700	650	30	1200
BARAUT	POTATO STORE	1200	1300	1250	16	1700
BHOPAL	POTATO STORE	900	1100	1000	125	1300
BHUBANESHWAR	POTATO STORE	1350	1450	1400	400	1700
CHANDIGARH	POTATO FRESH	1125	1250	1188	35	2000
CHENNAI	POTATO FRESH	1800	2000	1900	180	2400
DELHI	POTATO FRESH	1160	1240	1200	1596	2000
GANGATOK	POTATO STORE	1400	1600	1500	4	2100
GUWAHATI	POTATO FRESH	1400	1600	1500	65	2000
GUWAHATI	POTATO STORE	1100	1300	1200	140	1600
JAMMU	POTATO FRESH	1600	1700	1650	9	2000
JAMMU	POTATO STORE	1000	1300	1200	45	1600
KOLKATA	POTATO STORE	1300	1320	1310	441	1600
LUCKNOW	POTATO STORE	1000	1200	1100	65	1500
MUMBAI	POTATO FRESH	1000	1300	1200	1096	2000
PATNA	POTATO STORE	1050	1150	1100	65	1700
PUNE	POTATO FRESH	1400	1600	1500	755	1800
RAIPUR	POTATO STORE	1250	1350	1300	28	2000
SHIMLA	POTATO FRESH	1400	1600	1500	21	1600
SRINAGAR	POTATO STORE	1200	1400	1300	70	1800
SURAT	POTATO STORE	1100	1200	1150	210	1800
TRIVANDRUM	POTATO FRESH	2200	2600	2400	18	3200

(Source: NHB)

### Disclaimer

The information contained in this document has been compiled by Agriwatch from sources believed to be reliable, such as NHB, Agmarknet, etc. and directly from traders in mandis. However, users of this data are requested to use the information with due caution and crosscheck with other sources. This document is not, and should not be construed as an offer to sell or buy any commodities. This document may not be reproduced, distributed or published without the express consent of SFAC