

**Commodity: Chilli**  
**Contract: August**
**Exchange: NCDEX**  
**Expiry: August 17th, 2012**
**CHILLI**
**Technical Commentary:**

Dark cloud cover pattern reveals that prices may go down in the market. RSI is moving down to neutral region. However, Prices closed above 9 days and 18 days EMAs indicates to bullish sentiment in the market. Decrease in prices with lower OI indicates to long liquidation in the market.

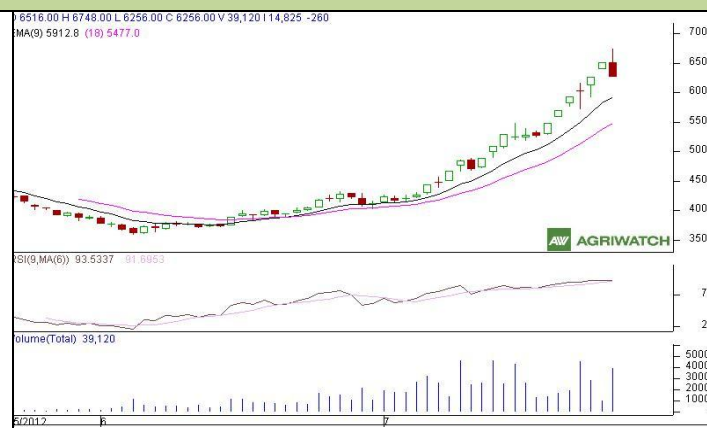

**Strategy:** Sell from near entry level.

Intraday Supports & Resistances			S2	S1	PCP	R1	R2
Chilli	NCDEX	Aug	5463	5637	5812	6069	6327
Intraday Trade Call			Call	Entry	T1	T2	SL
Chilli	NCDEX	Aug	<b>Sell</b>	5855-5875	5765	5715	5915

Do not carry forward the position until the next day

**Commodity: Turmeric**  
**Contract: August**
**Exchange: NCDEX**  
**Expiry: August 17th, 2012**
**TURMERIC**
**Technical Commentary:**

Candlestick formation reveals that prices may go down in the market. Decrease in prices with lower OI indicates to long liquidation in the market. RSI is moving up in overbought region which might take correction in short term.


**Strategy:** Sell from near entry level.

Intraday Supports & Resistances			S2	S1	PCP	R1	R2
Turmeric	NCDEX	Aug	5928	6092	6256	6584	6912
Intraday Trade Call			Call	Entry	T1	T2	SL
Turmeric	NCDEX	Aug	<b>Sell</b>	6375-6405	6250	6180	6460

Do not carry forward the position until the next day.

**Commodity: Coriander**  
**Contract: August**
**Exchange: NCDEX**  
**Expiry: August 17<sup>th</sup>, 2012**
**CORIANDER**
**Technical Commentary:**

Doji candlestick formation reveals indecision situation in the market. Prices closed above 9 days and 18 days EMAs indicates bullish sentiment in the market. RSI is moving up in overbought region which might take correction in near term.


**Strategy:** Market participants are waiting for next trading session.

			S2	S1	PCP	R1	R2
Coriander	NCDEX	Aug	4334	4483	4631	4788	4944
Intraday Trade Call			Call	Entry	T1	T2	SL
Coriander	NCDEX	Aug	Wait	-	-	-	-

Do not carry forward the position until the next day

**Commodity: Jeera (Cumin Seed)**  
**Contract: August**
**Exchange: NCDEX**  
**Expiry: August 17<sup>th</sup>, 2012**
**JEERA**
**Technical Commentary:**

Candlestick formation reveals that prices may go down in the market. RSI is moving down in neutral zone. Decrease in prices with lower OI indicates to long liquidation in the market.


**Strategy:** Sell from near entry level.

Intraday Supports & Resistances			S2	S1	PCP	R1	R2
Jeera	NCDEX	Aug	15655	15940	16225	16712	17200
Intraday Trade Call			Call	Entry	T1	T2	SL
Jeera	NCDEX	Aug	Sell	16300-16330	16155	16075	16395

Do not carry forward the position until the next day.

**Commodity: Black Pepper**  
**Contract: August**
**Exchange: NCDEX**  
**Expiry: August 17th, 2012**
**BLACK PEPPER**
**Technical Commentary:**

Candlestick formation reveals that prices may go down in the market. RSI is moving down in neutral region. Decrease in prices with lower OI indicates to long liquidation in the market.


**Strategy: Sell from near entry level.**

Intraday Supports & Resistances			S2	S1	PCP	R1	R2
Black Pepper	NCDEX	Aug	42517	43033	43550	44253	44957
Intraday Trade Call			Call	Entry	T1	T2	SL
Black Pepper	NCDEX	Aug	<b>Sell</b>	43620-43670	43345	43195	43795

Do not carry forward the position until the next day

**Commodity: Cardamom**  
**Contract: August**
**Exchange: MCX**  
**Expiry: August 15<sup>th</sup>, 2012**
**CARDAMOM**
**Technical Commentary:**

Candlestick formation reveals that prices are moving in upward channel. Prices closed above 9 days and 18 EMAs also indicates bullish sentiment in the market. Decrease in prices with lower OI indicates to long liquidation in the market.


**Strategy: Buy from near entry level.**

			S2	S1	PCP	R1	R2
Cardamom	MCX	Aug	1351	1383.6	1416	1458	1500
Intraday Trade Call			Call	Entry	T1	T2	SL
Cardamom	MCX	Aug	<b>Buy</b>	1414-1416	1431	1439	1407

Do not carry forward the position until the next day



### Disclaimer

The information and opinions contained in the document have been compiled from sources believed to be reliable. The company does not warrant its accuracy, completeness and correctness. Use of data and information contained in this report is at your own risk. This document is not, and should not be construed as, an offer to sell or solicitation to buy any commodities. This document Jun not be reproduced, distributed or published, in whole or in part, by any recipient hereof for any purpose without prior permission from the Company. IASL and its affiliates and/or their officers, directors and employees Jun have positions in any commodities mentioned in this document (or in any related investment) and Jun from time to time add to or dispose of any such commodities (or investment). Please see the detailed disclaimer at <http://www.agriwatch.com/Disclaimer.asp>  
© 2005 Indian Agribusiness Systems Pvt Ltd.