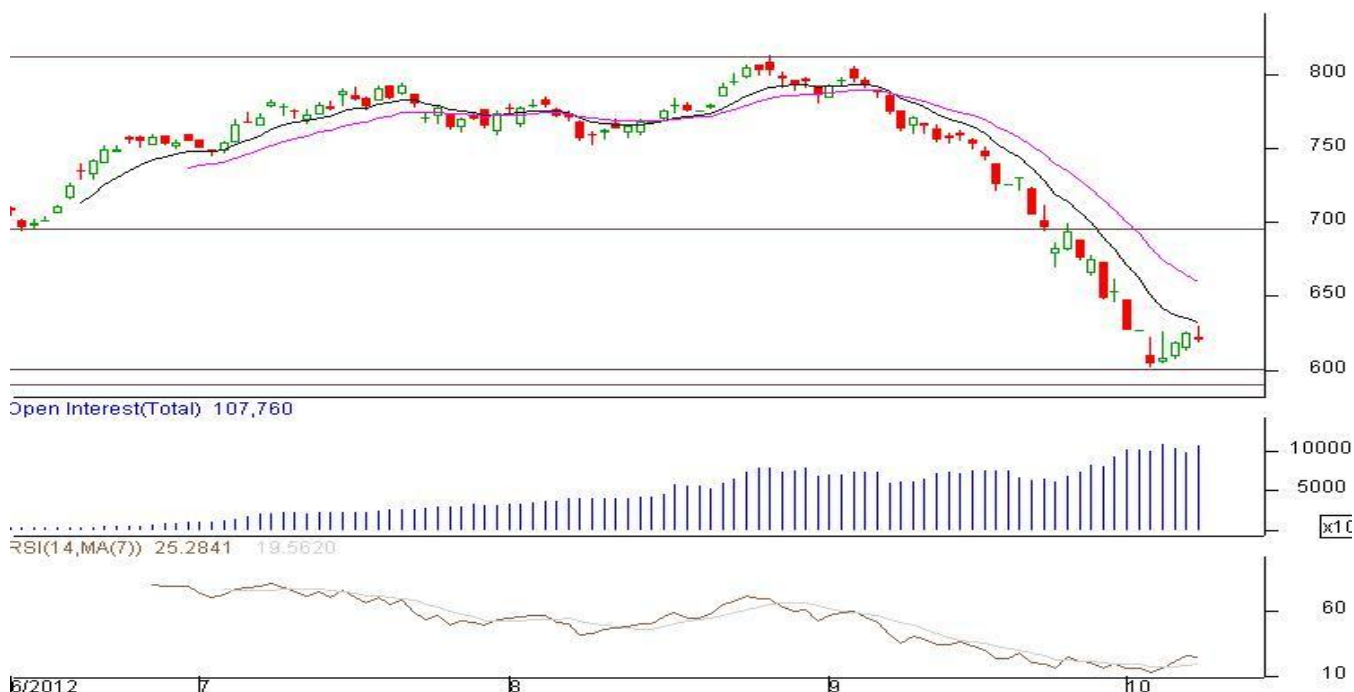


Commodity: Refined Soybean Oil
Contract: Nov
Exchange: NCDEX
Expiry: Nov 20th, 2012
REFINED SOYBEAN OIL (RSBO)

Ref SoyaOil Ind 1211(NCRSOX2)2012/10/08 - Daily B:619.50 A:620.05


Technical Commentary:

- ✓ RSO likely to trade with a steady tone in today's trading session.
- ✓ RSI is in between oversold zone; PVO analysis depicts short covering in the previous trading session. However, prices may rebound from lower levels.
- ✓ 617-621 range likely to be the price band for today's trading session; any breakout on either side will confirm fresh directional moves.

View: Buy

Intraday Supports & Resistances			S2	S1	PCP	R1	R2
Refined Soy Oil	NCDEX	Nov	609.00	612.00	620.25	633.00	636.00
Intraday Trade Call			Call	Entry	T1	T2	S.L
Refined Soy Oil	NCDEX	Nov	Buy	617-618	620	621	616.25

Commodity: Crude Palm Oil
Contract: Oct
Exchange: MCX
Expiry: Oct 30th, 2012
CRUDE PALM OIL (CPO)

CPO-MCX 1210(MXCPOV2)2012/10/08 - Daily B:405.70 A:410.50


Technical Commentary:

- ✓ CPO likely to trade with steady tone in today's trading session. RSI is in oversold zone; PVO analysis depicts short covering in the previous trading session.
- ✓ 403-407 range likely to be the price band for today's trading session; any breakout on either side will confirm fresh directional moves.

View: Buy

Intraday Supports & Resistances			S2	S1	PCP	R1	R2
Crude Palm Oil	MCX	Oct	394.00	397.00	406.80	415.00	418.00
Intraday Trade Call			Call	Entry	T1	T2	SL
Crude Palm Oil	MCX	Oct	Buy	403-404	406.50	407.00	402.00

*Do not carry forward the position until next day.

Disclaimer

The information and opinions contained in the document have been compiled from sources believed to be reliable. The company does not warrant its accuracy, completeness and correctness. Use of data and information contained in this report is at your own risk. This document is not, and should not be construed as, an offer to sell or solicitation to buy any commodities. This document may not be reproduced, distributed or published, in whole or in part, by any recipient hereof for any purpose without prior permission from the Company. IASL and its affiliates and/or their officers, directors and employees may have positions in any commodities mentioned in this document (or in any related investment) and may from time to time add to or dispose of any such commodities (or investment). Please see the detailed disclaimer at <http://www.agriwatch.com/Disclaimer.php>
 © 2005 Indian Agribusiness Systems Pvt Ltd.