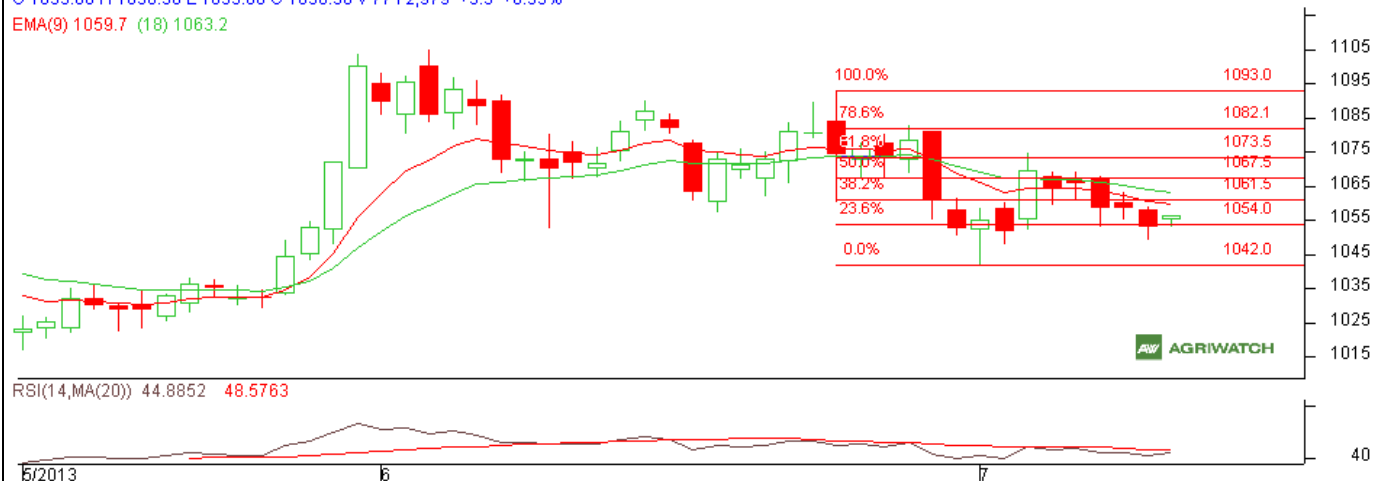


Commodity: Kapas
Contract: April
Exchange: NCDEX
Expiry: April 30th, 2014
Kapas

O 1055.00 H 1056.50 L 1053.00 C 1056.50 V 7712,979 +3.5 +0.33%

EMA(9) 1059.7 (18) 1063.2


Technical Commentary:

- Market is moving downward as depicted by the candlestick chart.
- In yesterday's trading session fall in OI and rise in price indicates short covering.
- Oscillator RSI is in neutral zone.
- Prices closed below 9 and 18 days EMA.

Strategy: Buy near Entry Level

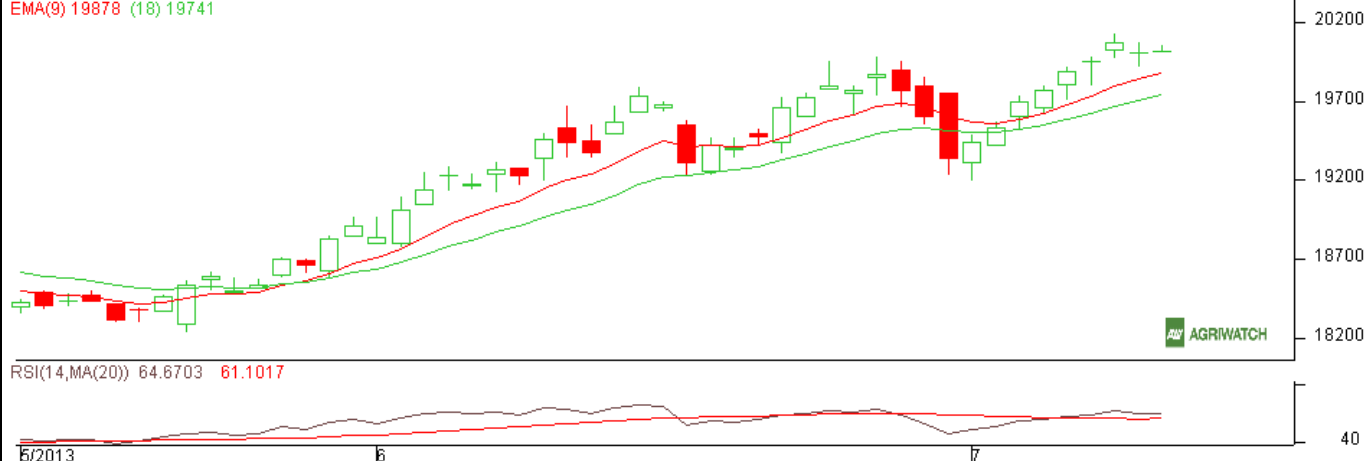
Intraday Supports & Resistances			S2	S1	PCP	R1	R2
Kapas	NCDEX	April	1042	1048	1053	1067	1073
Intraday Trade Call*			Call	Entry	T1	T2	SL
Kapas	NCDEX	April	Buy	1054-1055	1060	1063	1050

*Do not carry forward the position until the next day.

Commodity: Cotton
Contract: July
Exchange: MCX
Expiry: July 31st 2013
Cotton

O 20020.00 H 20050.00 L 20010.00 C 20020.00 V 61 T 21,020 I 5,791 +10 +0.05%

EMA(9) 19878 (18) 19741


Technical Commentary:

- Market is moving upward as depicted by the candlestick chart.
- In yesterday's trading session rise in OI and fall in price indicates Short buildup.
- Oscillator RSI is in neutral zone.
- Prices closed above 9 and 18 days EMA.

Strategy: Buy from Entry Level

Intraday Supports & Resistances			S2	S1	PCP	R1	R2
Cotton	MCX	July	19900	19950	20010	20100	20115
Intraday Trade Call*			Call	Entry	T1	T2	SL
Cotton	MCX	July	Buy	Above 19990	20050	20080	19960

*Do not carry forward the position until the next day.

Disclaimer

The information and opinions contained in the document have been compiled from sources believed to be reliable. The company does not warrant its accuracy, completeness and correctness. Use of data and information contained in this report is at your own risk. This document is not, and should not be construed as, an offer to sell or solicitation to buy any commodities. This document may not be reproduced, distributed or published, in whole or in part, by any recipient hereof for any purpose without prior permission from the Company. IASL and its affiliates and/or their officers, directors and employees may have positions in any commodities mentioned in this document (or in any related investment) and may from time to time add to or dispose of any such commodities (or investment). Please see the detailed disclaimer at <http://www.agriwatch.com/Disclaimer.php> © 2013 Indian Agribusiness Systems Pvt Ltd.