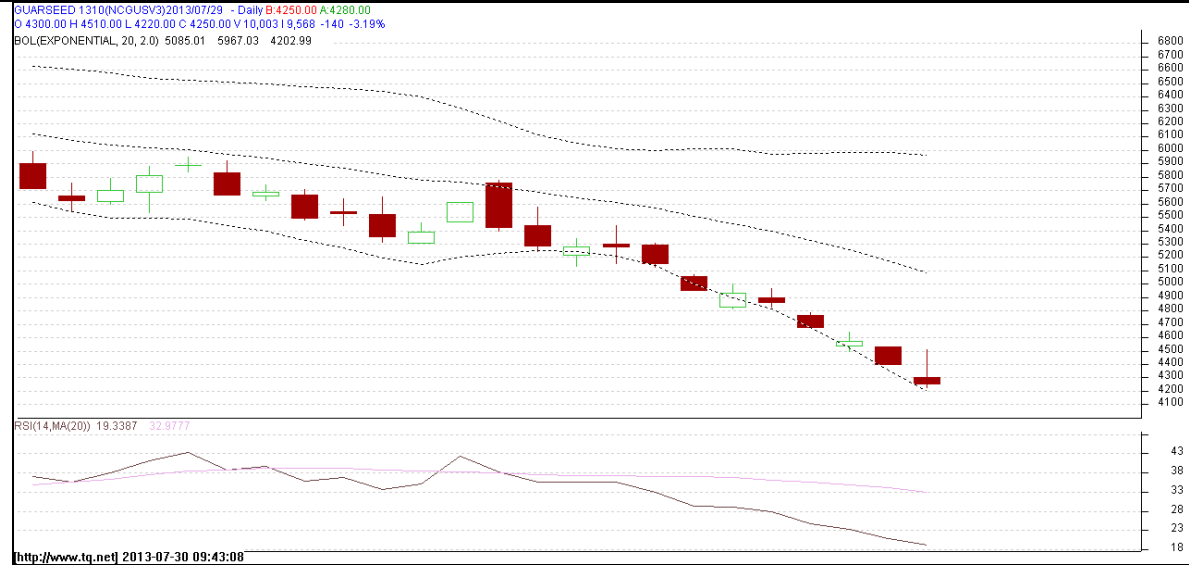


**Commodity: Guar seed**  
**Contract: October**

**Exchange: NCDEX**  
**Expiry: Oct 18<sup>th</sup>, 2013**

### Guar Seed



### Technical Commentary:

- Prices are moving in a downward channel as chart depicts..
- Last candlestick depicts bearishness in the market.
- However, RSI is hovering at oversold region.

### Strategy: Sell

Intraday Supports & Resistances			S2	S1	PCP	R1	R2
Guar Seed	NCDEX	October	-	4126	4250	4910	5160
Intraday Trade Call			Call	Entry	T1	T2	SL
Guar Seed	NCDEX	October	<b>Sell</b>	Below 4300	4200	4150	4360

Do not carry forward the position until the next day.

**Commodity: Guar Gum**  
**Contract: October**
**Exchange: NCDEX**  
**Expiry: Oct 18<sup>th</sup>, 2013**
**Guar Gum**

GUARGUM1310(NCDEX)2013/07/29 - Daily B:12010.00 A:12090.00  
 O:12230.00 H:12850.00 L:11920.00 C:12010.00 V:1,958 I:2,493 -360 -2.91%  
 BOL(EXPONENTIAL, 20, 2.0) 14556.1 17326.5 11785.7


**Technical Commentary:**

- Prices are moving in a downward as chart depicts.
- Last candlestick indicates bearishness.
- RSI is moving at oversold region.

**Strategy: Sell**

Intraday Supports & Resistances			S2	S1	PCP	R1	R2
Guar gum	NCDEX	October	-	11180	12010	13740	14530
Intraday Trade Call			Call	Entry	T1	T2	SL
Guar gum	NCDEX	October	<b>Sell</b>	Below 11900	11700	11600	12020

Do not carry forward the position until the next day.

**Disclaimer**

The information and opinions contained in the document have been compiled from sources believed to be reliable. The company does not warrant its accuracy, completeness and correctness. Use of data and information contained in this report is at your own risk. This document is not, and should not be construed as, an offer to sell or solicitation to buy any commodities. This document may not be reproduced, distributed or published, in whole or in part, by any recipient hereof for any purpose without prior permission from the Company. IASL and its affiliates and/or their officers, directors and employees may have positions in any commodities mentioned in this document (or in any related investment) and may from time to time add to or dispose of any such commodities (or investment). Please see the detailed disclaimer at <http://www.agriwatch.com/Disclaimer.asp>  
 © 2005 Indian Agribusiness Systems Pvt Ltd.