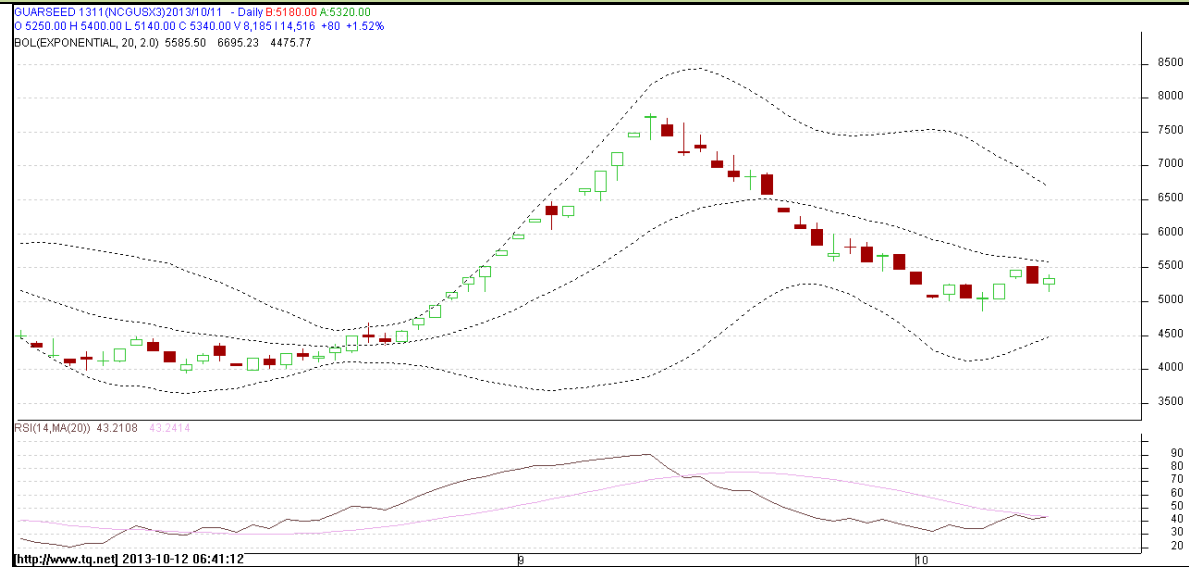


**Commodity: Guar seed**  
**Contract: Nov**

**Exchange: NCDEX**  
**Expiry: Nov 20<sup>th</sup>, 2013**

### Guar Seed



### Technical Commentary:

- Prices are moving downward as chart depicts.
- Last candlestick depicts bearishness in the market.
- Also, RSI is hovering near to neutral region.

### Strategy: Wait

Intraday Supports & Resistances			S2	S1	PCP	R1	R2
Guar Seed	NCDEX	Nov	4510	4860	5340	5830	5980
Intraday Trade Call			Call	Entry	T1	T2	SL
Guar Seed	NCDEX	Nov	Wait	-	-	-	-

Do not carry forward the position until the next day.

**Commodity: Guar Gum**  
**Contract: Nov**
**Exchange: NCDEX**  
**Expiry: Nov 20<sup>th</sup>, 2013**
**Guar Gum**

**Technical Commentary:**

- Prices are still moving in an upward trend as chart depicts.
- RSI is moving near to neutral region.
- Last candlestick depicts bullishness.

**Strategy: Wait**

Intraday Supports & Resistances			S2	S1	PCP	R1	R2
Guar gum	NCDEX	Nov	12480	13360	14760	15790	15990
Intraday Trade Call			Call	Entry	T1	T2	SL
Guar gum	NCDEX	Nov	Wait	-	-	-	-

Do not carry forward the position until the next day.

**Disclaimer**

The information and opinions contained in the document have been compiled from sources believed to be reliable. The company does not warrant its accuracy, completeness and correctness. Use of data and information contained in this report is at your own risk. This document is not, and should not be construed as, an offer to sell or solicitation to buy any commodities. This document may not be reproduced, distributed or published, in whole or in part, by any recipient hereof for any purpose without prior permission from the Company. IASL and its affiliates and/or their officers, directors and employees may have positions in any commodities mentioned in this document (or in any related investment) and may from time to time add to or dispose of any such commodities (or investment). Please see the detailed disclaimer at <http://www.agriwatch.com/Disclaimer.asp>  
 © 2013 Indian Agribusiness Systems Pvt Ltd.