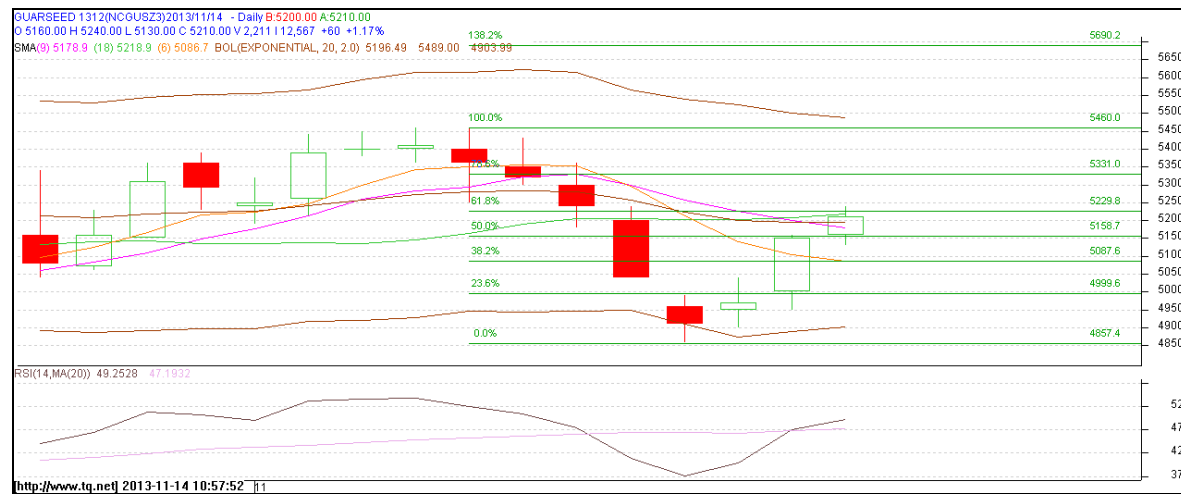


**Commodity: Guar seed**  
**Contract: Dec**

**Exchange: NCDEX**  
**Expiry: Dec 20<sup>th</sup>, 2013**

### Guar Seed



### Technical Commentary:

- Prices are moving in a short trading range..
- Last candlestick depicts bullishness in the market.
- Also, RSI is hovering near to neutral region.

### Strategy: Buy

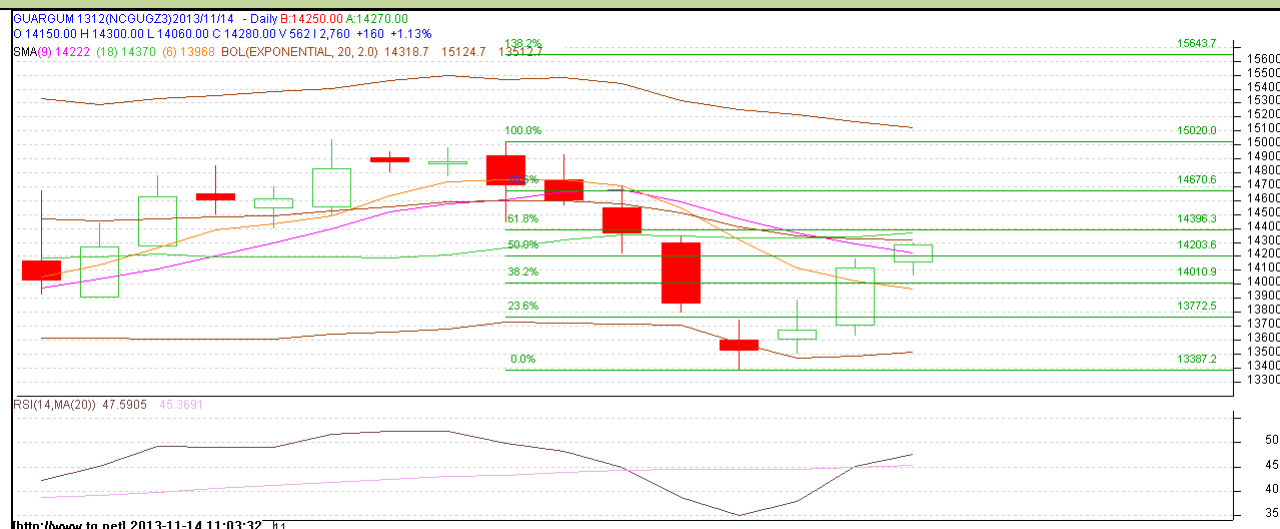
| Intraday Supports & Resistances |       |     | S2   | S1        | PCP  | R1   | R2   |
|---------------------------------|-------|-----|------|-----------|------|------|------|
| Guar Seed                       | NCDEX | Dec | 4570 | 4820      | 5150 | 5460 | 5710 |
| Intraday Trade Call             |       |     | Call | Entry     | T1   | T2   | SL   |
| Guar Seed                       | NCDEX | Dec | Buy  | Near 5160 | 5230 | 5260 | 5120 |

Do not carry forward the position until the next day.

**Commodity: Guar Gum**  
**Contract: Dec**

**Exchange: NCDEX**  
**Expiry: Dec 20<sup>th</sup>, 2013**

### Guar Gum



### Technical Commentary:

- Prices are hovering in a short upward channel as chart depicts.
- RSI is moving near to oversold region.
- Last candlestick depicts bullishness in the market.

### Strategy: Buy

| Intraday Supports & Resistances |       |     | S2    | S1          | PCP   | R1    | R2    |
|---------------------------------|-------|-----|-------|-------------|-------|-------|-------|
| Guar gum                        | NCDEX | Dec | 12650 | 13320       | 14120 | 15040 | -     |
| Intraday Trade Call             |       |     | Call  | Entry       | T1    | T2    | SL    |
| Guar gum                        | NCDEX | Dec | Buy   | Above 14020 | 14250 | 14360 | 13870 |

Do not carry forward the position until the next day.

### Disclaimer

The information and opinions contained in the document have been compiled from sources believed to be reliable. The company does not warrant its accuracy, completeness and correctness. Use of data and information contained in this report is at your own risk. This document is not, and should not be construed as, an offer to sell or solicitation to buy any commodities. This document may not be reproduced, distributed or published, in whole or in part, by any recipient hereof for any purpose without prior permission from the Company. IASL and its affiliates and/or their officers, directors and employees may have positions in any commodities mentioned in this document (or in any related investment) and may from time to time add to or dispose of any such commodities (or investment). Please see the detailed disclaimer at <http://www.agriwatch.com/Disclaimer.asp>

© 2013 Indian Agribusiness Systems Pvt Ltd.