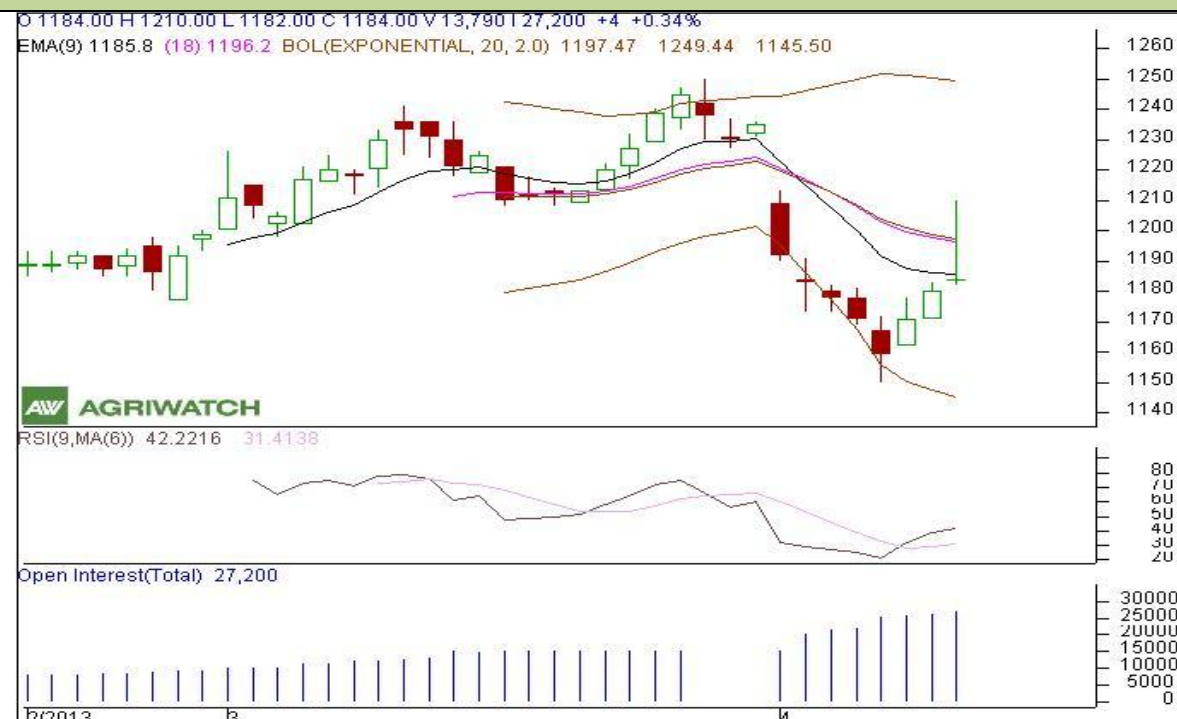


Commodity: Maize
Contract: May
Exchange: NCDEX
Expiry: 20th May, 2013
Maize

Technical Commentary:

- Doji candlestick formation reveals indecision situation in the market.
- RSI is moving up in neutral zone indicates to bullish sentiment.
- However, Prices closed below 9 and 18 days EMAs indicates to bearish sentiment.

Strategy: Wait.

Intraday Supports & Resistances			S2	S1	PCP	R1	R2
Maize	NCDEX	May	1164	1174	1184	1202	1220
Intraday Trade Call			Call	Entry	T1	T2	SL
Maize	NCDEX	May	Wait	-	-	-	-

Do not carry forward the position until the next day.

Disclaimer

The information and opinions contained in the document have been compiled from sources believed to be reliable. The company does not warrant its accuracy, completeness and correctness. Use of data and information contained in this report is at your own risk. This document is not, and should not be construed as, an offer to sell or solicitation to buy any commodities. This document may not be reproduced, distributed or published, in whole or in part, by any recipient hereof for any purpose without prior permission from the Company. IASL and its affiliates and/or their officers, directors and employees may have positions in any commodities mentioned in this document (or in any related investment) and may from time to time add to or dispose of any such commodities (or investment). Please see the detailed disclaimer at <http://www.agriwatch.com/Disclaimer.asp>

© 2013 Indian Agribusiness Systems Pvt Ltd.