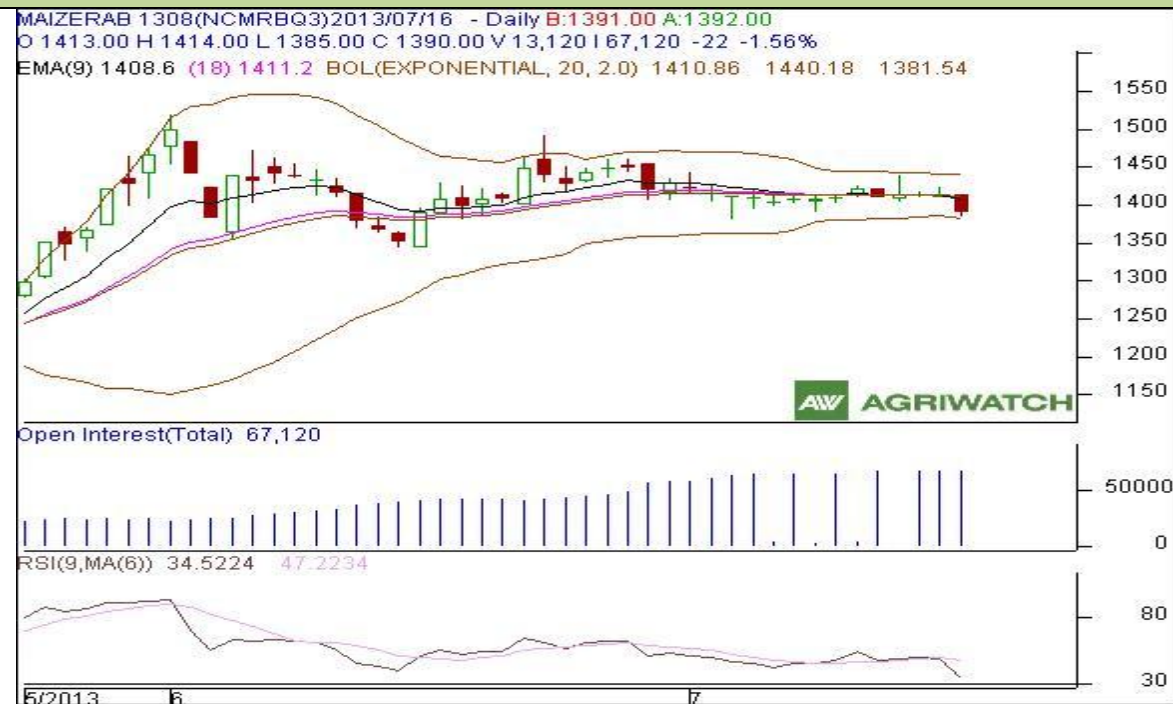


Commodity: Maize
Contract: August
Exchange: NCDEX
Expiry: 20th Aug, 2013
Maize

Technical Commentary:

- Candlestick chart pattern reveals bearish movement in the market.
- RSI is moving down in neutral zone support to bearishness.
- Prices closed below 9 and 18 days EMAs also indicates to bearishness.
- Decrease in prices with lower OI indicates to long liquidation in the market.

Strategy: Sell near entry level.

Intraday Supports & Resistances			S2	S1	PCP	R1	R2
Maize	NCDEX	August	1367	1379	1390	1408	1425
Intraday Trade Call			Call	Entry	T1	T2	SL
Maize	NCDEX	August	Sell	Below 1397	1389	1385	1401

Do not carry forward the position until the next day.

Disclaimer

The information and opinions contained in the document have been compiled from sources believed to be reliable. The company does not warrant its accuracy, completeness and correctness. Use of data and information contained in this report is at your own risk. This document is not, and should not be construed as, an offer to sell or solicitation to buy any commodities. This document may not be reproduced, distributed or published, in whole or in part, by any recipient hereof for any purpose without prior permission from the Company. IASL and its affiliates and/or their officers, directors and employees may have positions in any commodities mentioned in this document (or in any related investment) and may from time to time add to or dispose of any such commodities (or investment). Please see the detailed disclaimer at <http://www.agriwatch.com/Disclaimer.asp>
 © 2013 Indian Agribusiness Systems Pvt Ltd.