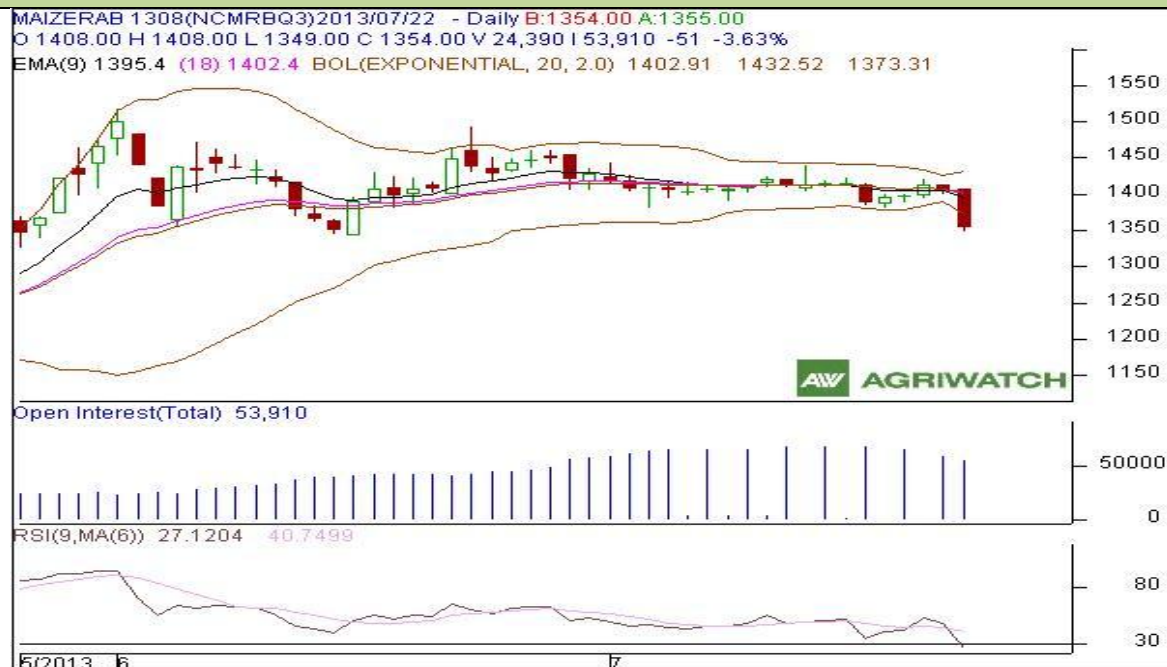


**Commodity: Maize**  
**Contract: August**
**Exchange: NCDEX**  
**Expiry: 20<sup>th</sup> Aug, 2013**
**Maize**

**Technical Commentary:**

- Candlestick chart pattern reveals that prices could go down in the market.
- RSI is moving down in oversold region which might take correction in short run.
- Prices closed below 9 and 18 days EMAs.
- Decrease in prices with lower OI indicates to long liquidation in the market.

**Strategy: Sell near entry level.**

Intraday Supports & Resistances			S2	S1	PCP	R1	R2
Maize	NCDEX	August	1311	1333	1354	1392	1429
Intraday Trade Call			Call	Entry	T1	T2	SL
Maize	NCDEX	August	<b>Sell</b>	Below 1368	1352	1344	1376

Do not carry forward the position until the next day.

**Disclaimer**

The information and opinions contained in the document have been compiled from sources believed to be reliable. The company does not warrant its accuracy, completeness and correctness. Use of data and information contained in this report is at your own risk. This document is not, and should not be construed as, an offer to sell or solicitation to buy any commodities. This document may not be reproduced, distributed or published, in whole or in part, by any recipient hereof for any purpose without prior permission from the Company. IASL and its affiliates and/or their officers, directors and employees may have positions in any commodities mentioned in this document (or in any related investment) and may from time to time add to or dispose of any such commodities (or investment). Please see the detailed disclaimer at <http://www.agriwatch.com/Disclaimer.asp>

© 2013 Indian Agribusiness Systems Pvt Ltd.